

**SPANN
BOX®**
Made in Germany DBP



Spann-Box Control Óptico Interruptor de Paso

OPTICAL CONTROL DISPLAYS

Murtfeldt Spann-Box® systems generally have a coloured scale. This enables you to determine the tensioning state of the chain at a glance. The display is as easy to understand as possible:

■ Green

The chain tensioner is working in the “green range”. The tensioning force is providing an ideal, smooth running movement.

■ Yellow

The tensioning force is not ideal but is still sufficient.

■ Red

The chain tensioner needs to be adjusted. The tensioning force on the chain is too low for a smooth and reliable running movement.

The chain has to be replaced if it is not possible to sufficiently adjust the chain tensioner using any of the available adjustment options.

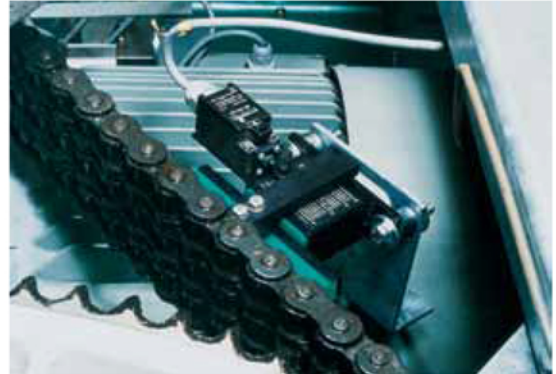


CHAIN AND BELT MONITORS

If a chain has excessive elongation or a break, critical damage can occur. Our chain and belt monitors track the production process and trigger the automatic shutdown of the machine if malfunctions occur. For this purpose, a mechanical limit switch or contact-free inductive switch is integrated into your chain or belt tensioner.

Both individual and reliable

Switch design requirements can vary greatly. Please contact us for more information. We will design the best solution for your requirements.



MECHANICAL LIMIT SWITCHES

To best suit your requirements

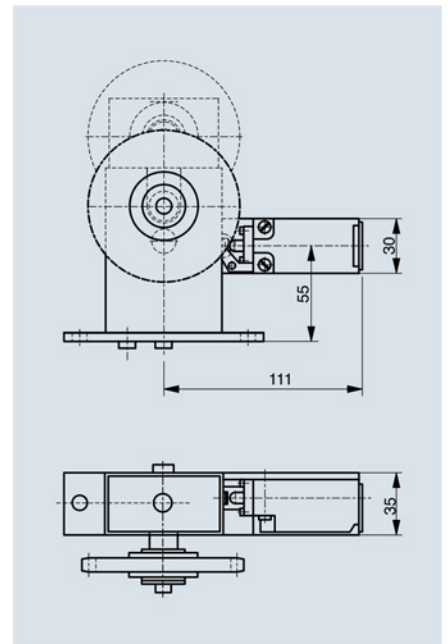
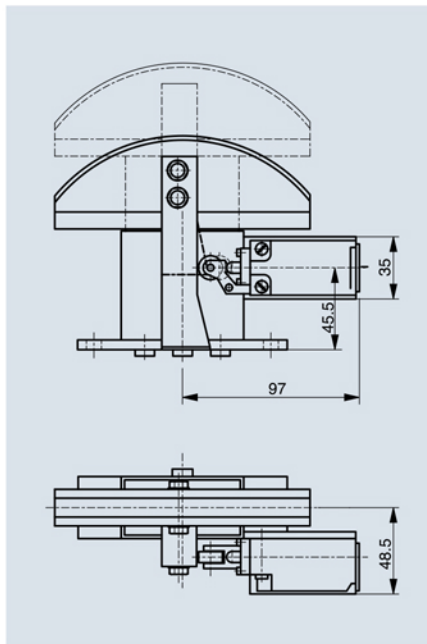
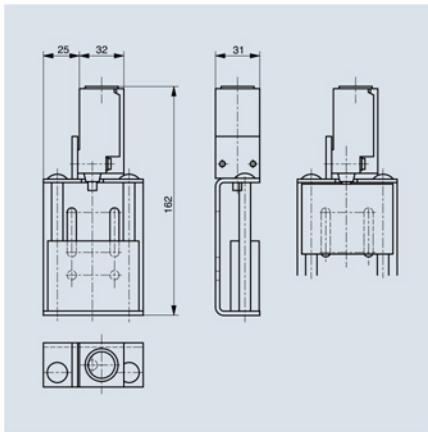
The attachment location depends on the Spann-Box® type. In most cases, the limit switch is attached on the side. The contact is triggered by a cam switch attached to the slide profile. In the case of some models (types K-L and SR-L), the contact is achieved directly via the tension core by means of an opening in the housing.

Limit switches attached on the side are not suitable for the Spann-Boy®, for example. In this case, a limit switch mounted on top is used instead. A contact is actuated when the pressure pin on the tension core is reached.

If you decide on a Spann-Box® or Spann-Boy® design, please contact us. We will provide detailed advice on a range of custom options.



When ordering, please state “with mechanical limit switch” or “with inductive switch” in addition to the article number.



Spann-Boy® (left) and Spann-Box® (right) with mechanical limit switch

INDUCTIVE SWITCHES

For Spann-Box®

Alternatively, a contact-free inductive switch can be used. This makes sense if there is a risk of explosion or contamination. Concerns about wear might also result in the use of an inductive switch. Inductive switches can be used for Spann-Box® size 1 and 2. Special models and designs in stainless steel are available on request.

