

Paso de 25.4 mm (1.00 pulgadas)

uni SNB M2 – La única banda de superficie abierta y superficie reforzada (Rib)

La nueva uni SNB M2 20% (juntas cerradas) permite una limpieza más fácil manteniendo un esfuerzo de tracción alto. La superficie plana de la uni SNB M2 20% hace posible un transporte suave de productos sensibles, a la vez que ofrece una superficie abierta para favorecer el paso de aire o drenaje. La banda uni SNB M2 puede combinarse con bandas uni SNB M2 Single Link® en tramos múltiples de separadores y combinadores para incrementar la velocidad de los transportadores y la salida del producto. La uni SNB M2 34% (Área de contacto reducida) es única en aplicaciones de acumulación en seco.

La banda uni SNB M2 mejora el funcionamiento en las siguientes industrias/aplicaciones:

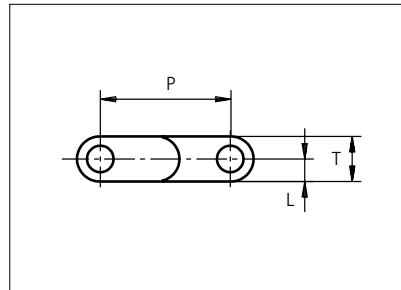
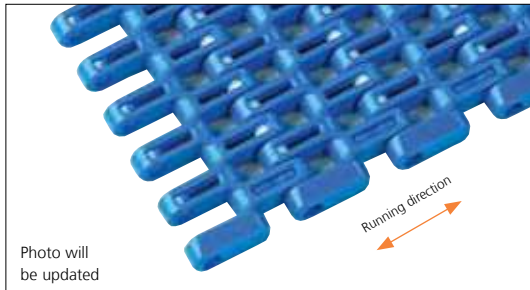
- Cárnicas, incluyendo líneas de microondas, enfriamiento y congelación
- Fruta y verdura, incluyendo líneas de desecado, enfriamiento y congelación
- Pasta, incluyendo escaldadores, pasteurizadores y líneas de refrigeración
- Bebidas, incluyendo mesas de acumulación, alimentación de empaquetadoras, pasteurizadores y paletizadoras
- Fabricación de latas, incluyendo mesas de acumulación, manipulación masiva y paletizadoras

Características del producto y ventajas de funcionamiento:

- Menor fricción y contacto con el producto para cocinar, enfriar y congelar productos con facilidad
- Las superficies radiales de la superficie reducen la presión de la línea posterior hasta un 70%
- Menor suciedad y restos de óxido, gracias a una superficie de autolimpieza
- Sistema de cierre único (lockpin) que permite un montaje fácil y menos tiempos muertos
- Peines para una transferencia sin problemas

Plastic Modular Belt

Series **uni SNB** Type **M2 34%**



Straight running belt
 Nominal pitch: 25.4 mm (1.00 in)
 Surface type: Flat
 Surface opening: 34%
 Backflex radius: 30.0 mm (1.20 in)
 Pin diameter: 5.0 mm (0.20 in)

*P (Nominal)

Belt material & color	POM-D	PP	PP	PP	PE	PE	mm	in	mm	in			
	B	B	G	W	N	B							
Pin material & color	PP B		PP W			PE N		P (Nominal)	25.4	1.00	L	4.4	0.17
	PP B		PP W			PE N		T	8.8	0.35	-	-	-

Non standard material and color: See uni Material and Color Overview.

Alternative pin and lock materials: Pin: PP W PE W PA6.6 B PBT LG SS304 Lockpin: PBT LG PA6.6 D N PP B W PE N
 Endlock: PP-I B G W

Belt width		Permissible tensile force (Belt/pin material)						Belt weight (Belt/pin material)						*Min. No. drive sprocket per shaft	Number of wear strips (Min. No.)	
		POM-D/PP		PP/PP		PE/PE		POM-D/PP		PP/PP		PE/PE			**Carry (pcs)	**Return (pcs)
mm	in	N	lbf	N	lbf	N	lbf	kg/m	lb/ft	kg/m	lb/ft	kg/m	lb/ft			
45	1.8	1034	232	660	148	440	99	0.3	0.19	0.2	0.13	0.2	0.13	2	1	1
77	3.0	1810	407	1155	260	770	173	0.5	0.33	0.3	0.22	0.3	0.23	2	2	2
153	6.0	3596	808	2295	516	1530	344	1.0	0.65	0.7	0.44	0.7	0.45	2	2	2
229	9.0	5382	1210	3435	772	2290	515	1.4	0.97	1.0	0.66	1.0	0.68	2	2	2
305	12.0	7168	1611	4575	1028	3050	686	1.9	1.29	1.3	0.88	1.3	0.90	3	3	2
381	15.0	8954	2013	5715	1285	3810	856	2.4	1.61	1.6	1.10	1.7	1.13	3	3	2
457	18.0	10740	2414	6855	1541	4570	1027	2.9	1.93	2.0	1.32	2.0	1.35	4	4	2
533	21.0	12526	2816	7995	1797	5330	1198	3.4	2.26	2.3	1.54	2.3	1.58	4	4	2
609	24.0	14312	3217	9135	2054	6090	1369	3.8	2.58	2.6	1.76	2.7	1.80	5	5	3
686	27.0	16121	3624	10290	2313	6860	1542	4.3	2.90	2.9	1.98	3.0	2.03	5	5	3
762	30.0	17907	4025	11430	2569	7620	1713	4.8	3.23	3.3	2.20	3.4	2.25	6	6	3
838	33.0	19693	4427	12570	2826	8380	1884	5.3	3.55	3.6	2.42	3.7	2.48	6	6	3
914	36.0	21479	4828	13710	3082	9140	2055	5.8	3.87	3.9	2.64	4.0	2.70	7	7	4

Additional standard belt widths are available in steps of 76.1 mm (3.00 in). Additional non-standard belt widths are available in steps of 12.7 mm (0.50 in).

1979	77.9	46507	10455	29685	6673	19790	4449	12.5	8.38	8.5	5.72	8.7	5.85	14	14	7
------	------	-------	-------	-------	------	-------	------	------	------	-----	------	-----	------	----	----	---

Additional standard belt widths are available in steps of 76.1 mm (3.00 in). Additional non-standard belt widths are available in steps of 12.7 mm (0.50 in).

2969	116.9	69772	15685	44535	10011	29690	6674	18.7	12.57	12.8	8.58	13.1	8.78	20	20	10
------	-------	-------	-------	-------	-------	-------	------	------	-------	------	------	------	------	----	----	----

General belt tolerance is +0/-0.4% at 23°C/73°F and 50% RH. For exact belt width contact Customer Service. Non standard belt width on request.

*Max. Load per Drive Sprocket. Belt material: POM-D 1400 N (315 lbf). PP 1100 N (247 lbf). PE 1100 N (247 lbf).

**Max. Spacing between wear strips. Carry: 152.0 mm (6.00 in); Return: 304.0 mm (12.00 in).

= Single Link



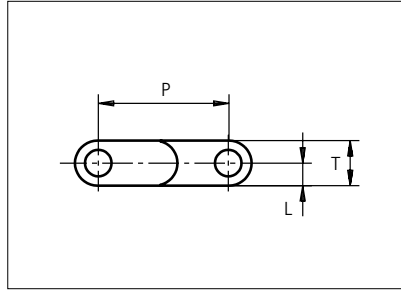
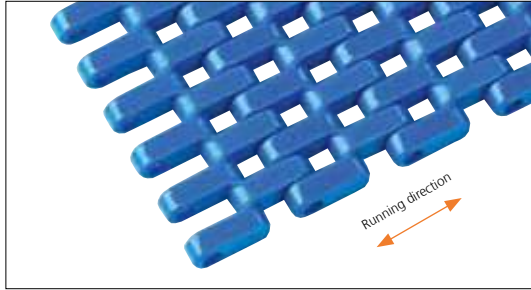
STANDARD

STRAIGHT RUNNING

PITCH 25.4 MM/1.00 IN

Plastic Modular Belt

Series **uni SNB** Type **M2 20%**



Straight running belt
 Nominal pitch: 25.4 mm (1.00 in)
 Surface type: Flat
 Surface opening: 20%
 Backflex radius: 30.0 mm (1.20 in)
 Pin diameter: 5.0 mm (0.20 in)

Belt material & color	POM-D B	PP B	PP W	PE N	PE B		mm	in		mm	in
							P (Nominal)	25.4	1.00	L	4.4
Pin material & color	PP B		PP W		PE N		T	8.8	0.35	-	-

Non standard material and color: See uni Material and Color Overview.

Alternative pin and lock materials: Lockpin: PBT **LG** PA6.6 **D** **N** PP **B** **W** PE **N**

Belt width		Permissible tensile force (Belt/pin material)						Belt weight (Belt/pin material)						*Min. No. drive sprocket per shaft	Number of wear strips (Min. No.)	
		POM-D/PA6.6		PP/PA6.6		PE/PA6.6		POM-D/PA6.6		PP/PA6.6		PE/PA6.6			**Carry (pcs)	**Return (pcs)
mm	in	N	lbf	N	lbf	N	lbf	kg/m	lb/ft	kg/m	lb/ft	kg/m	lb/ft			
77	3.0	1810	407	1155	260	770	173	0.5	0.33	0.3	0.22	0.3	0.23	2	2	2
153	6.0	3596	808	2295	516	1530	344	1.0	0.65	0.7	0.44	0.7	0.45	2	2	2
191	7.5	4489	1009	2865	644	1910	429	1.2	0.81	0.8	0.55	0.8	0.56	2	2	2
229	9.0	5382	1210	3435	772	2290	515	1.4	0.97	1.0	0.66	1.0	0.68	2	2	2
305	12.0	7168	1611	4575	1028	3050	686	1.9	1.29	1.3	0.88	1.3	0.90	3	3	2
381	15.0	8954	2013	5715	1285	3810	856	2.4	1.61	1.6	1.10	1.7	1.13	3	3	2
457	18.0	10740	2414	6855	1541	4570	1027	2.9	1.93	2.0	1.32	2.0	1.35	4	4	2
533	21.0	12526	2816	7995	1797	5330	1198	3.4	2.26	2.3	1.54	2.3	1.58	4	4	2
609	24.0	14312	3217	9135	2054	6090	1369	3.8	2.58	2.6	1.76	2.7	1.80	5	5	3
685	27.0	16098	3619	10275	2310	6850	1540	4.3	2.90	2.9	1.98	3.0	2.03	5	5	3
761	30.0	17884	4020	11415	2566	7610	1711	4.8	3.22	3.3	2.20	3.3	2.25	6	6	3
837	33.0	19670	4422	12555	2822	8370	1882	5.3	3.54	3.6	2.42	3.7	2.48	6	6	3
913	35.9	21456	4823	13695	3079	9130	2052	5.8	3.87	3.9	2.64	4.0	2.70	7	7	4

Additional standard belt widths are available in steps of 76.1 mm (3.00 in). Additional non-standard belt widths are available in steps of 12.7 mm (0.50 in).

1978	77.9	46483	10449	29670	6670	19780	4447	12.5	8.37	8.5	5.72	8.7	5.85	14	14	7
------	------	-------	-------	-------	------	-------	------	------	------	-----	------	-----	------	----	----	---

Additional standard belt widths are available in steps of 76.1 mm (3.00 in). Additional non-standard belt widths are available in steps of 12.7 mm (0.50 in).

2967	116.8	69725	15674	44505	10005	29670	6670	18.7	12.56	12.8	8.57	13.1	8.77	20	20	10
------	-------	-------	-------	-------	-------	-------	------	------	-------	------	------	------	------	----	----	----

General belt tolerance is +0/-0.4% at 23°C/73°F and 50% RH. For exact belt width contact Customer Service. Non standard belt width on request.

*Max. Load per Drive Sprocket. Belt material: POM-D 1400 N (315 lbf), PP 1100 N (247 lbf), PE 1100 N (247 lbf).

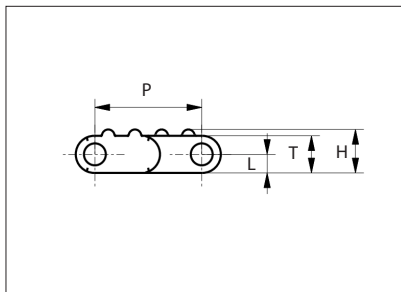
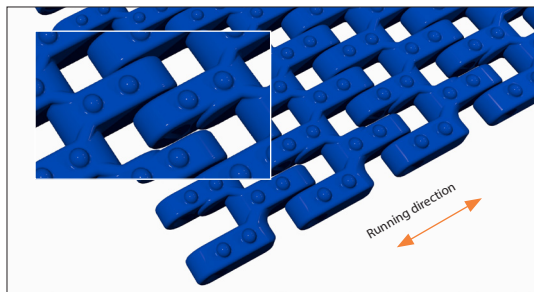
**Max. Spacing between wear strips, Carry: 152.0 mm (6.00 in); Return: 304.0 mm (12.00 in).

= Single Link



Plastic Modular Belt

Series **uni SNB** Type **M2 20% Open Nub Top**



Straight running belt
 Nominal pitch: 25.4 mm (1.00 in)
 Surface type: Nub Top
 Surface opening: 20%
 Backflex radius: 30.0 mm (1.20 in)
 Pin diameter: 5.0 mm (0.20 in)

Belt material & color	PE B	PE N	PP B	PP W	POM B		mm	in		mm	in
						P (Nominal)	25.4	1.00	L	4.4	0.17
Pin material & color						T	8.8	0.35	H	10.3	0.43

Non standard material and color: See uni Material and Color Overview.

Belt width		Permissible tensile force (Belt/pin material)						Belt weight (Belt/pin material)						*Min. No. drive sprocket per shaft	Number of wear strips (Min. No.)	
		POM-D/PP		PP/PP		PE/PE		POM-D/PP		PP/PP		PE/PE			**Carry (pcs)	**Return (pcs)
mm	in	N	lbf	N	lbf	N	lbf	kg/m	lb/ft	kg/m	lb/ft	kg/m	lb/ft			
153	6.0	3596	808	2295	516	1530	344	1.2	0.84	0.8	0.55	0.9	0.58	2	2	2
229	9.0	5382	1210	3435	772	2290	515	1.9	1.25	1.2	0.83	1.3	0.87	2	2	2
305	12.0	7168	1611	4575	1028	3050	686	2.5	1.67	1.6	1.10	1.7	1.16	3	3	2
381	15.0	8954	2013	5715	1285	3810	856	3.1	2.08	2.0	1.38	2.2	1.45	3	3	2
457	18.0	10740	2414	6855	1541	4570	1027	3.7	2.50	2.5	1.65	2.6	1.74	4	4	2
533	21.0	12526	2816	7995	1797	5330	1198	4.3	2.92	2.9	1.93	3.0	2.03	4	4	2
609	24.0	14312	3217	9135	2054	6090	1369	5.0	3.33	3.3	2.20	3.5	2.32	5	5	3
685	27.0	16098	3619	10275	2310	6850	1540	5.6	3.75	3.7	2.47	3.9	2.61	5	5	3
761	30.0	17884	4020	11415	2566	7610	1711	6.2	4.16	4.1	2.75	4.3	2.90	6	6	3
837	33.0	19670	4422	12555	2822	8370	1882	6.8	4.58	4.5	3.02	4.7	3.19	6	6	3
913	35.9	21456	4823	13695	3079	9130	2052	7.4	4.99	4.9	3.30	5.2	3.48	7	7	4
989	38.9	23242	5225	14835	3335	9890	2223	8.1	5.41	5.3	3.57	5.6	3.77	7	7	4
1065	41.9	25028	5626	15975	3591	10650	2394	8.7	5.83	5.7	3.85	6.0	4.06	8	8	4

Additional standard belt widths are available in steps of 76.1 mm (3.00 in). Additional non-standard belt widths are available in steps of 12.7 mm (0.50 in).

1978	77.9	46483	10449	29670	6670	19780	4447	16.1	10.82	10.6	7.15	11.2	7.53	14	14	7
------	------	-------	-------	-------	------	-------	------	------	-------	------	------	------	------	----	----	---

Additional standard belt widths are available in steps of 76.1 mm (3.00 in). Additional non-standard belt widths are available in steps of 12.7 mm (0.50 in).

2967	116.8	69725	15674	44505	10005	29670	6670	24.2	16.23	16.0	10.72	16.8	11.30	20	20	10
------	-------	-------	-------	-------	-------	-------	------	------	-------	------	-------	------	-------	----	----	----

Standard indent is 38.1 mm (1.5 in) (Belts without nubs).

*General belt tolerance is +0/-0.4% at 23°C/73°F and 50% RH. For exact belt width contact Customer Service. Non standard belt width on request.

*Max. Load per Drive Sprocket. Belt material: POM-D 1400 N (315 lbf), PP 1100 N (247 lbf), PE 1100 N (247 lbf)

**Max. Spacing between wear strips, Carry: 152.0 mm (6.00 in); Return: 304.0 mm (12.00 in).

= Single Link



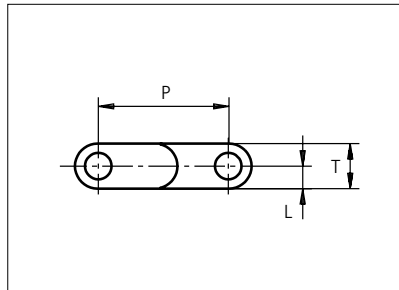
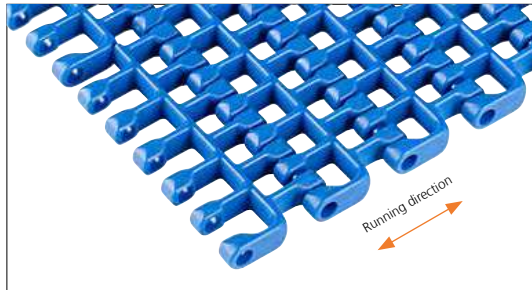
STANDARD

STRAIGHT RUNNING

PITCH 25.4 MM/1.00 IN

Plastic Modular Belt

Series **uni SNB** Type **M2 50%**



Straight running belt
 Nominal pitch: 25.4 mm (1.00 in)
 Surface type: Flat
 Surface opening: 50%
 Backflex radius: 30.0 mm (1.20 in)
 Pin diameter: 5.0 mm (0.20 in)

Belt material & color	PA6.6 B	PP B	PP W	mm	in		mm	in	
				P (Nominal)	25.4	1.00	L	4.4	0.17
Pin material & color	PP B						PP W		
				T	8.8	0.35	-	-	-

Non standard material and color: See uni Material and Color Overview.

Alternative pin and lock materials: Lockpin: PBT **LG** PA6.6 **D** **N** PP **B** **W** PE **N**

Belt width		Permissible tensile force (Belt/pin material)				Belt weight (Belt/pin material)				*Min. No. drive sprocket per shaft	Number of wear strips (Min. No.)	
		PP/PP		PA6.6/PP		PP/PP		PA6.6/PP			**Carry (pcs)	**Return (pcs)
mm	in	N	lbf	N	lbf	kg/m	lb/ft	kg/m	lb/ft			
153	6.0	1836	413	3060	688	0.5	0.31	0.6	0.38	2	2	2
229	9.0	2748	618	4580	1030	0.7	0.47	0.8	0.56	2	2	2
305	12.0	3660	823	6100	1371	0.9	0.62	1.1	0.75	3	3	2
381	15.0	4572	1028	7620	1713	1.2	0.78	1.4	0.94	3	3	2
457	18.0	5484	1233	9140	2055	1.4	0.93	1.7	1.13	4	4	2
533	21.0	6396	1438	10660	2396	1.6	1.09	2.0	1.31	4	4	2
609	24.0	7308	1643	12180	2738	1.8	1.24	2.2	1.50	5	5	3
685	27.0	8220	1848	13700	3080	2.1	1.39	2.5	1.69	5	5	3
761	30.0	9132	2053	15220	3421	2.3	1.55	2.8	1.88	6	6	3
837	33.0	10044	2258	16740	3763	2.5	1.70	3.1	2.06	6	6	3
913	35.9	10956	2463	18260	4105	2.8	1.86	3.4	2.25	7	7	4
989	38.9	11868	2668	19780	4447	3.0	2.01	3.6	2.44	7	7	4
1065	41.9	12780	2873	21300	4788	3.2	2.17	3.9	2.63	8	8	4

Additional standard belt widths are available in steps of 76.1 mm (3.00 in). Additional non-standard belt widths are available in steps of 12.7 mm (0.50 in).

1977	77.8	23724	5333	39540	8889	6.0	4.03	7.3	4.88	14	14	7
------	------	-------	------	-------	------	-----	------	-----	------	----	----	---

Additional standard belt widths are available in steps of 76.1 mm (3.00 in). Additional non-standard belt widths are available in steps of 12.7 mm (0.50 in).

2965	116.7	35580	7998	59300	13331	9.0	6.04	10.9	7.31	20	20	10
------	-------	-------	------	-------	-------	-----	------	------	------	----	----	----

General belt tolerance is +0/-0.4% at 23°C/73°F and 50% RH. For exact belt width contact Customer Service. Non standard belt width on request.

Belt widths in PA66 is 0,2 % wider than the belt widths in the table above.

*Max. Load per Drive Sprocket. Belt material: PP 1100 N (247 lbf); PA66 1400 N (315 lbf).

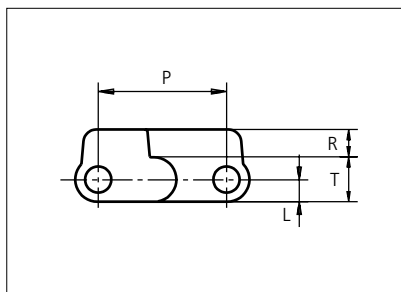
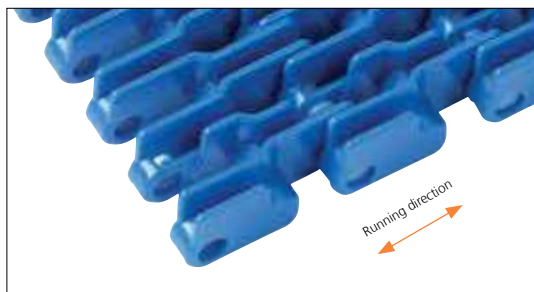
**Max. Spacing between wear strips, Carry: 152.0 mm (6.00 in); Return: 304.0 mm (12.00 in).

□ = Single Link



Plastic Modular Belt

Series **uni SNB** Type **M2 34% Rib**



Straight running belt
 Nominal pitch: 25.4 mm (1.00 in)
 Surface type: Rib Top
 Surface opening: 34%
 Backflex radius: 30.0 mm (1.20 in)
 Pin diameter: 5.0 mm (0.20 in)

Belt material & color	POM-SLF B	PP B	mm	in		mm	in	
	Pin material & color		P (Nominal)	25.4	1.00	R	5.5	0.22
		PP B	L	4.4	0.17	T	8.8	0.35

Non standard material and color: See uni Material and Color Overview.

Alternative pin and lock materials: Pin: PA6.6 **B** SS304

Endlock: PP-I **B**

Lockpin: PP **W** PBT **LG** PA6.6 **D** **N** PE **N**

Belt width		Permissible tensile force (Belt/pin material)				Belt weight (Belt/pin material)				*Min. No. drive sprocket per shaft	Number of wear strips (Min. No.)	
		POM-SLF/PP		PP/PP		POM-SLF/PP		PP/PP			**Carry (pcs)	**Return (pcs)
mm	in	N	lbf	N	lbf	Kg/m	lb/ft	Kg/m	lb/ft			
77	3.0	1810	407	1155	260	0.5	0.33	0.3	0.22	2	2	2
153	6.0	3596	808	2295	516	1.0	0.65	0.7	0.44	2	2	2
229	9.0	5382	1210	3435	772	1.4	0.97	1.0	0.66	2	2	2
305	12.0	7168	1611	4575	1028	1.9	1.29	1.3	0.88	3	3	2
381	15.0	8954	2013	5715	1285	2.4	1.61	1.6	1.10	3	3	2
457	18.0	10740	2414	6855	1541	2.9	1.93	2.0	1.32	4	4	2
533	21.0	12526	2816	7995	1797	3.4	2.26	2.3	1.54	4	4	2
609	24.0	14312	3217	9135	2054	3.8	2.58	2.6	1.76	5	5	3
685	27.0	16098	3619	10275	2310	4.3	2.90	2.9	1.98	5	5	3
761	30.0	17884	4020	11415	2566	4.8	3.22	3.3	2.20	6	6	3
837	33.0	19670	4422	12555	2822	5.3	3.54	3.6	2.42	6	6	3
913	35.9	21456	4823	13695	3079	5.8	3.87	3.9	2.64	7	7	4
989	38.9	23242	5225	14835	3335	6.2	4.19	4.3	2.86	7	7	4

Additional standard belt widths are available in steps of 76.1 mm (3.00 in). Additional non-standard belt widths are available in steps of 12.7 mm (0.50 in).

1979	77.9	46507	10455	29685	6673	12.5	8.38	8.5	5.72	14	14	7
------	------	-------	-------	-------	------	------	------	-----	------	----	----	---

Additional standard belt widths are available in steps of 76.1 mm (3.00 in). Additional non-standard belt widths are available in steps of 12.7 mm (0.50 in).

2969	116.9	69772	15685	44535	10011	18.7	12.57	12.8	8.58	20	20	10
------	-------	-------	-------	-------	-------	------	-------	------	------	----	----	----

General belt tolerance is +0/-0.4% at 23°C/73°F and 50% RH. For exact belt width contact Customer Service. Non standard belt width on request.

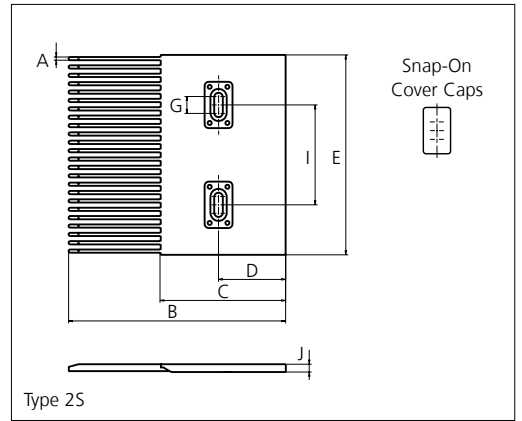
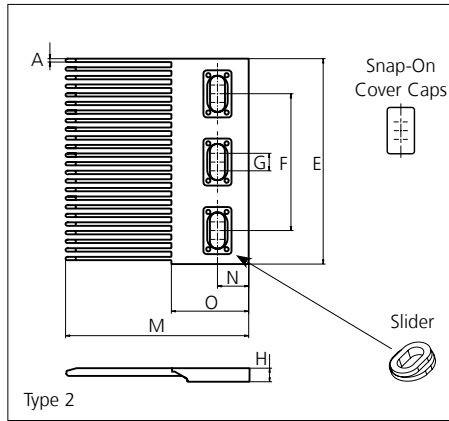
*Max. Load per Drive Sprocket. Belt material: POM-D 1400 N (315 lbf), PP 1100 N (247 lbf).

**Max. Spacing between wear strips, Carry: 152.0 mm (6.00 in); Return: 304.0 mm (12.00 in).

= Single Link

Accessories

Finger Plates



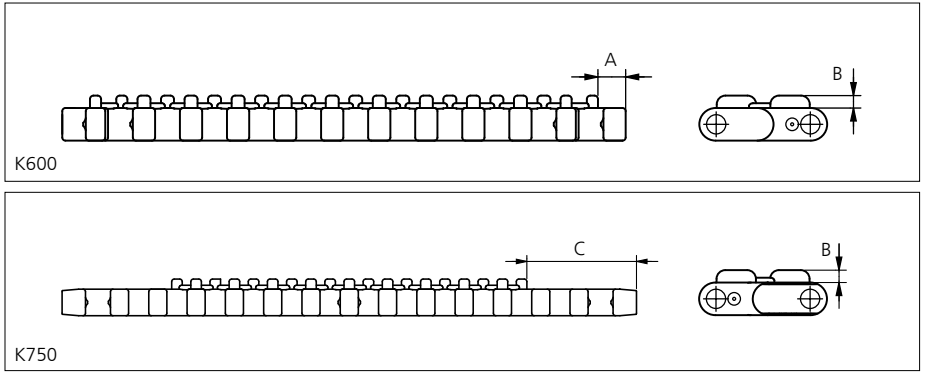
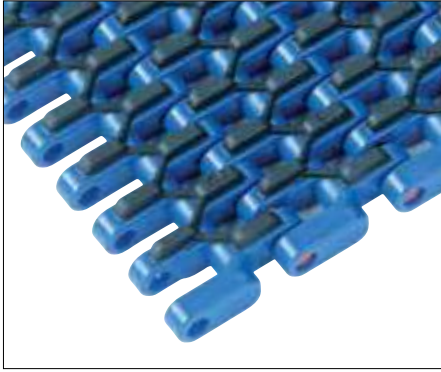
Type	Material & color	A		B		C		D		E		F			
		mm	in	mm	in	mm	in	mm	in	mm	in	mm	in		
Single Sided	POM-EC K	2.5	0.10	165.0	6.50	95.0	3.74	51.0	2.01	152.1	5.99	100.0	3.94		
Single Sided															
		G		H		I		J		M		N		O	
		mm	in	mm	in	mm	in	mm	in	mm	in	mm	in	mm	in
		12.0	0.47	10.3	0.41	76.0	3.00	6.0	0.24	135.0	5.31	23.0	0.91	57.0	2.24

All uni-chains belt systems are available in a raised rib version that can be supplied with matching finger plates also called combs. The finger plates are supplied with cover caps which can be attached when the finger plate has been installed. The cover caps can be removed by using a screwdriver that can be inserted between the cover and finger plate. In order to adjust to belt width variations caused by temperature fluctuations, a slider facilitates the sideways movement of the finger plates.

Non Standard material and color: See uni Material and Color Overview.

Accessories

Rubber Top

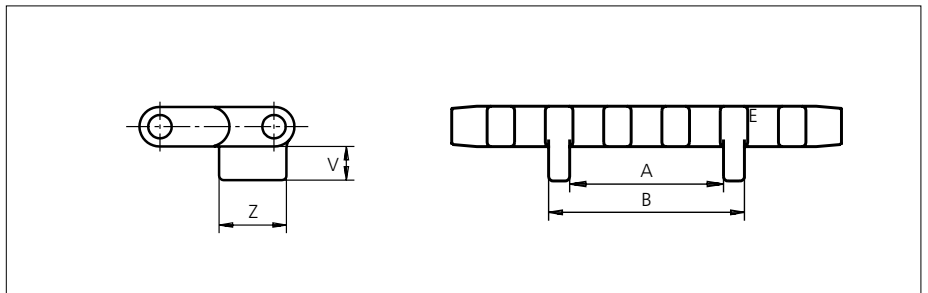


Type	Belt material & color	Rubber material & color	A		B		C		Link size	Width	
			mm	in	mm	in	mm	in		mm	in
M2 20% Flat	PP B	03 K	7.5	0.30	3.4	0.13	36.0	1.41	K300	77.0	3.00
									K600	152.4	6.00
	PP W	03 N							K750	190.5	7.50

Non Standard material and color: See uni Material and Color Overview.

Accessories

Tab / Single Link Only

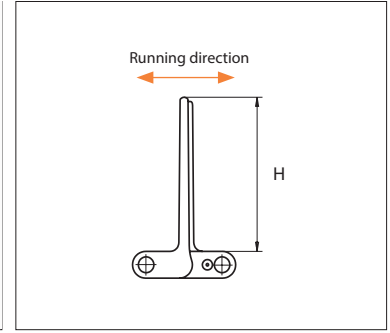
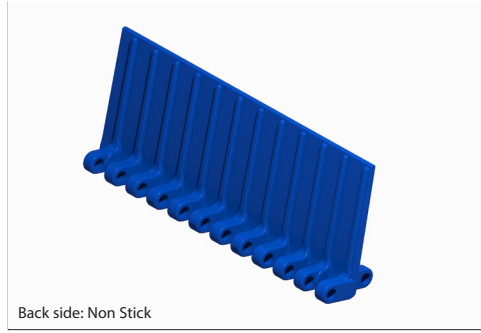
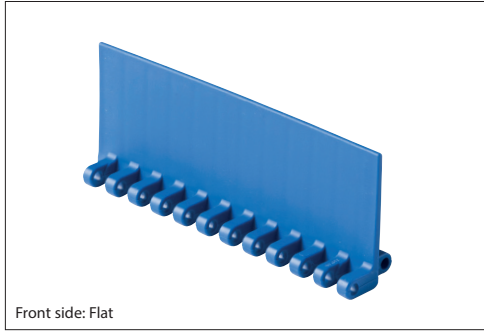


Type	Tab Material & color	V		Z		A		B		Link size	Width	
		mm	in	mm	in	mm	in	mm	in		mm	in
M2 34% Bottom Guide	POM-D B	7.50	0.29	15.0	0.59	33.5	1.19	42.7	1.68	K325	82.3	3.24
										K335	85.0	3.35
	PP B									K450	114.3	4.50
										K600	152.1	5.99
										K750	189.4	7.46

Non Standard material and color: See uni Material and Color Overview.

Accessories

Flight

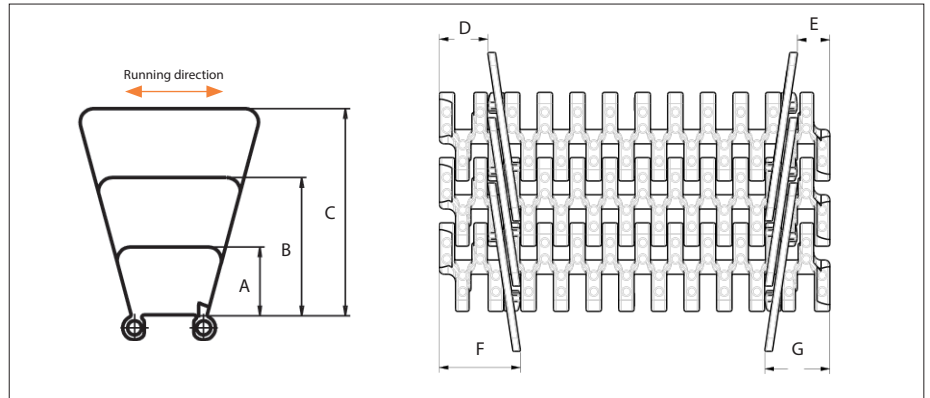


Type	Flight Material & color		H		Link size	Width	
			mm	in		mm	in
M2 20% Flat/Non Stick	PP-I W B	PE N B	5.0	0.20	K600	151.1	5.99
			25.4	1.00			
		PE-I N B	50.8	2.00			
			76.2	3.00			
			101.6	4.00			

Flights on 25.4 mm (1.00 in) are cut down from 50.8 mm (2.00 in).
Minimum indent is 38 mm (1.50 in)

Accessories

Side Guard



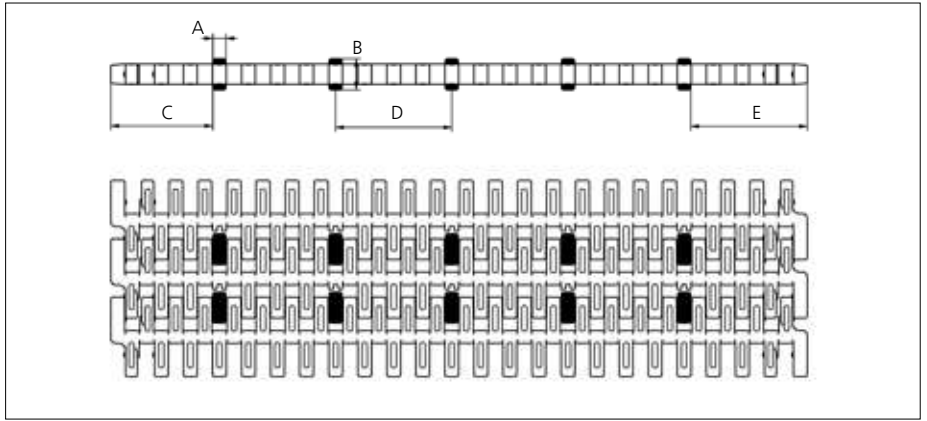
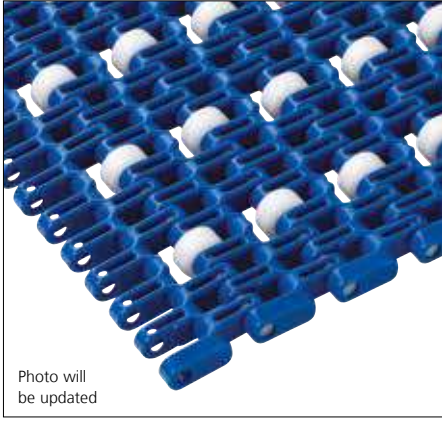
Type	Material & color	A		B		C		D		E		F		G	
		mm	in	mm	in	mm	in	mm	in	mm	in	mm	in	mm	in
Closed	PP-I W B	25.4	1.00	50.8	2.00	76.2	3.00	18.0	0.71	12.0	0.47	32.0	1.26	26.0	1.02

Non Standard material and color: See uni Material and Color Overview.

Backflex radius for Side Guide: 75.0 mm (2.95 in).

Accessories

Rollers NON STANDARD

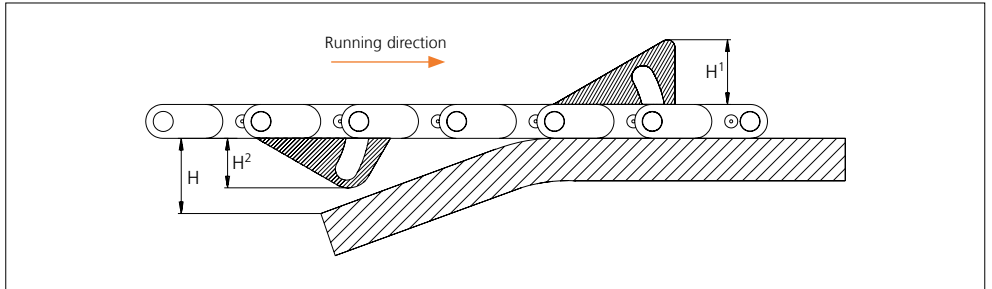


Type	Roller material & color	A		B		C		D		E	
		mm	in	mm	in	mm	in	mm	in	mm	in
Plastic	POM-D W	5.7	0.22	13.5	0.53	44.6	1.75	50.8	2.00	51.0	2.01

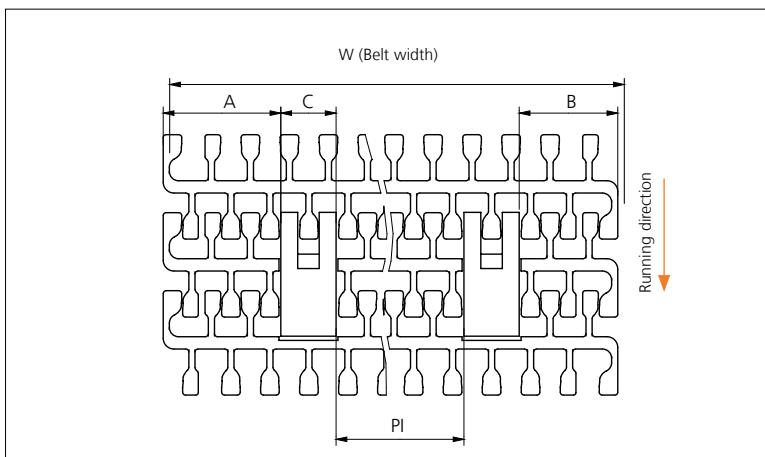
Non Standard material and color: See uni Material and Color Overview.

Accessories

AmFlight



Type	Material & color	H		H ¹		H ²	
		mm	in	mm	in	mm	in
Push	PE W	17.0	0.67	17.0	0.67	14.4	0.57



	mm	in
A min	38.3	1.51
B min	32.1	1.26
C	18.0	0.71
PI max	W - 106.4	W - 4.19
PI min	33.2	1.31

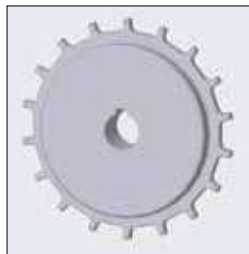
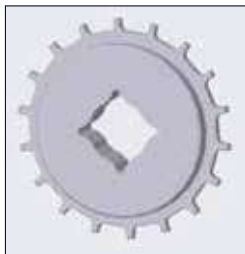
Increment: 12.7 mm (0.50 in).

Sprocket

No. of teeth	Bore size									Overall diameter		Pitch diameter		Hub diameter		Dimension A		Dimension B		Single row/Two way	Molded	PAG	LG
	Pilot Bore	1.00		1.25		1.50		2.36															
	in	mm	25.4	30.0	31.8	38.1	40.0	60.0	63.5	mm	in	mm	in	mm	in	mm	in						
Z10	✓		●	●	●	■	●				86.0	3.39	82.2	3.24	65.0	2.56	34.7	1.37	45.5	1.79	✓	✓	
Z12	✓		●	●	●	■	■				103.2	4.06	98.1	3.86	65.0	2.56	43.0	1.69	53.5	2.11	✓	✓	
Z18	✓			●	●	■	■				151.9	5.98	146.3	5.76	65.0	2.56	67.6	2.66	77.6	3.06	✓	✓	
Z18	✓							●	●		151.9	5.98	146.3	5.76	120.0	4.72	67.6	2.66	77.6	3.06	✓	✓	
Z19	✓			●	●	■	■				160.0	6.30	154.3	6.07	65.0	2.56	71.7	2.82	81.6	3.21	✓	✓	
Z19	✓							●	●		160.0	6.30	154.3	6.07	120.0	4.72	71.7	2.82	81.6	3.21	✓	✓	
Z20	✓			●	●	■	■				168.2	6.62	162.4	6.39	65.0	2.56	75.8	2.98	85.6	3.37	✓	✓	
Z20	✓							●	●		168.2	6.62	162.4	6.39	120.0	4.72	75.8	2.98	85.6	3.37	✓	✓	

■ Molded sprocket

● Molded sprocket



Other sprocket sizes are available upon request.

Other bore sizes on sprockets are available upon request.

Max. load per sprocket shown does not take bore size into account.

Please also ensure that sufficient size shaft is chosen for corresponding load.

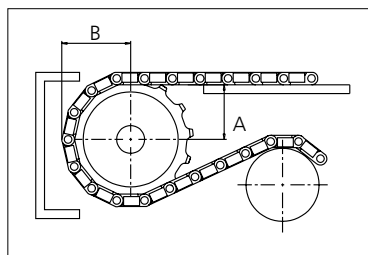
Width of tooth = Single row: 6.0 mm (0.24 in)

Width of One-part sprocket = Single row: 25.0 mm (0.98 in)

uni UltraClean Two-Part Sprocket

No. of teeth	Bore size					Overall diameter		Pitch diameter		Hub diameter		Dimension A		Dimension B		Single row/Two way	Molded	PAG	W
	in	1.50	1.57	2.36	2.50														
	mm	38.1	40.0	60.0	63.5	mm	in	mm	in	mm	in	mm	in						
Z12		■	■			103.2	4.06	98.1	3.86	80.0	3.15	43	1.69	53.5	2.11	✓	✓		
Z15		■	■			127.5	5.02	122.2	4.81	80.0	3.15	55.4	2.18	65.5	2.58	✓	✓		
Z19		1 ■	1 ■	2 ■	2 ■	160.0	6.30	154.3	6.07	118.0 126.0	4.65 4.96	71.7	2.82	81.6	3.21	✓	✓		
Z20			■			168.2	6.62	162.4	6.39	118	118.0	75.8	2.98	85.6	3.37	✓	✓		

■ Moulded uni UltraClean TwoPart Sprocket



Width of UltraClean Two-part sprocket = Single row: 44.0 mm (1.73 in)

Width of UltraClean Two-part sprocket, tooth = Single row: 6.0 mm (0.24 in)

uni Retainer Rings: See uni Retainer Ring data sheet.

For correct sprocket position: See uni Assembly Instructions for uni SNB M2.

For more detailed sprocket information, contact Customer Service.