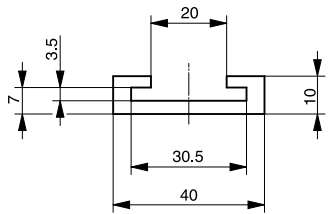


# SLIP-ON PROFILES

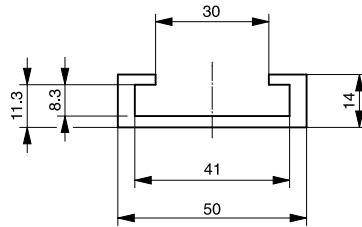


Here is a small selection of our extensive range of profiles.  
View our complete range at [www.murtefeldt.com](http://www.murtefeldt.com).

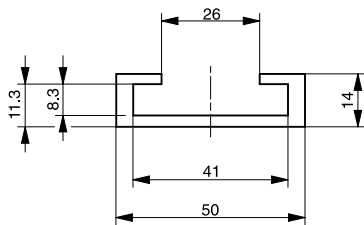
**Plastic C profile for flat steel, 30 × 3 milled/extruded**



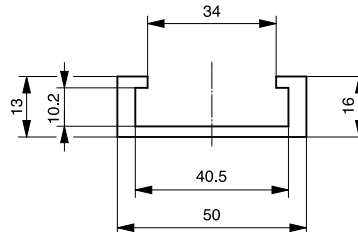
**Plastic C profile for flat steel, 40 × 8 milled**



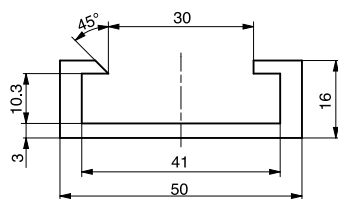
**Plastic C profile for flat steel, 40 × 8 extruded**



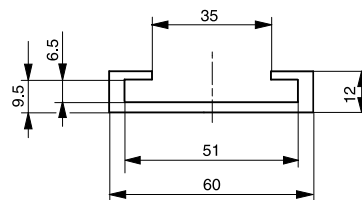
**Plastic C profile for flat steel, 40 × 10 milled**



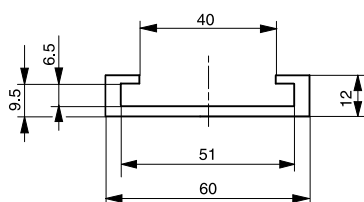
**Plastic C profile for flat steel, 40 × 10 extruded**



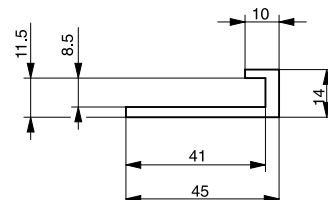
**Plastic C profile for flat steel, 50 × 6 milled**



**Plastic C profile for flat steel, 50 × 6 extruded**



**Plastic L profile for flat steel, 40 × 8 milled**



\* For milled profiles. Tolerances as per DIN 16941 for extruded profiles.