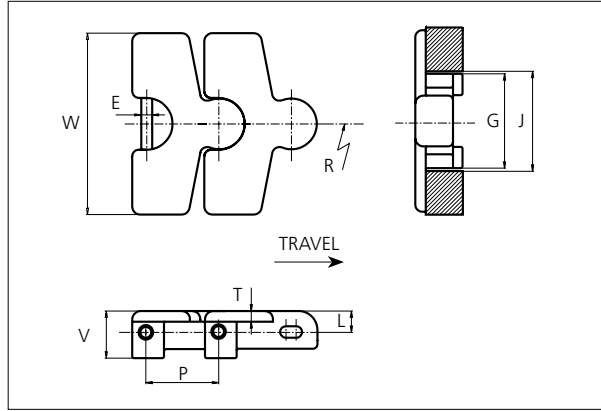


# uni Flex Plastic Chain

Series **uni 3000** Type -



**uni Flex Plastic Chain**  
 Side flexing chain  
 Pitch: 80.1 mm (3.15 in)  
 Backflex radius:  
 200.0 mm (8.00 in)  
 Permissible tensile strength:  
 POM material  
 11000 N (2473 lbf)  
  
 Standard shipping lengths:  
 boxes of 38 links  
 = 3.044 m (10.0 ft)

NON STANDARD

E		G		J		L		P		T		V	
mm	in	mm	in	mm	in	mm	in	mm	in	mm	in	mm	in
12.1	0.48	104.0	4.09	110.0	4.33	28.4	1.12	80.1	3.15	9.0	0.35	52.0	2.05

All dimensions are for chains in POM material.

Width (W)		Recommended Material & color	Recommended Pin material	Weight		Min radius R	
mm	in			kg/m	lb/ft	mm	in
200.0	7.87	POM-D <b>W</b> POM-D <b>G</b>	<b>SS304</b>	5.8	3.90	600.0	23.62



Non standard material and color: See uni Material and Color Overview.  
 Non standard pin material: See uni Material and Color Overview.

SIDE FLEXING

PITCH 80.1 MM/3.15 IN

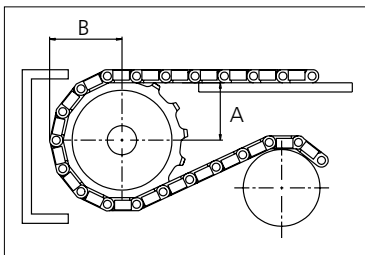
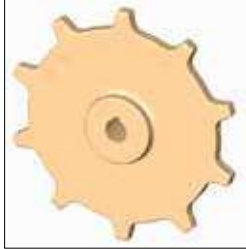


## Sprocket

No of teeth	Pitch diameter		Overall-diameter		Min. $\phi$ bore		Max. $\phi$ bore		Hub-diameter		Dimension A		Dimension B		 Machined PAG
	mm	in	mm	in	mm	in	mm	in	mm	in	mm	in	mm	in	
<b>Z10</b>	226.4	8.91	227.6	8.96	20.0	0.79	50.0	1.97	73.5	2.89	116.0	4.57	137.6	5.42	

Non standard material and color:  
See uni Material and Color Overview.

### Machined sprocket



**Please ensure that sufficient size shaft and keyway are chosen for corresponding load.**

Other sprocket sizes are available upon request  
 Width of tooth: 15.0 mm/0.60 in  
 Width of sprocket: 42.3 mm/1.66 in  
 uni Retainer Rings: See uni Retainer Ring data sheet