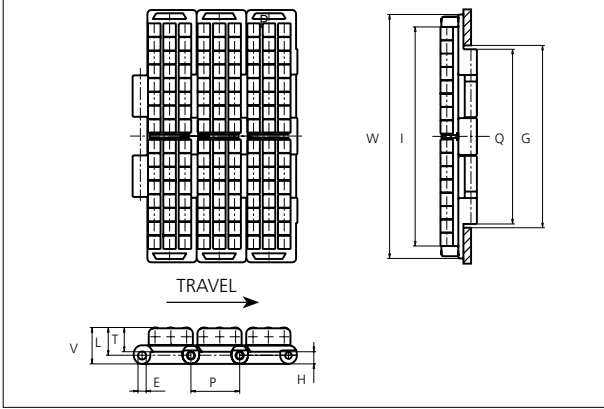


# Special Plastic Chain

Series **uni 821** Type **PRR**



**Special Plastic Chain**  
 Straight running chain  
 Pitch: 38.1 mm (1.50 in)  
 Backflex radius: 225.0 mm (8.90 in)  
 Permissible tensile strength:  
 POM material: 3000 N (674 lbf)  
 Standard shipping lengths:  
 boxes of 80 links  
 = 3.048 m (10.0 ft)  
 Axle materials for  $\varnothing 5.0$  mm  
 (0.20 in) accumulation rollers: See  
 uni Material and Color Overview.

STANDARD

E		G		H		I (K750)		I (K1000)		I (K1200)		L		P		Q		T		V	
mm	in	mm	in	mm	in	mm	in	mm	in	mm	in	mm	in	mm	in	mm	in	mm	in	mm	in
6.4	0.25	140.0	5.51	9.5	0.37	174.5	6.87	238.0	9.37	288.8	11.37	22.2	0.87	38.1	1.50	136.5	5.37	19.0	0.75	28.5	1.12

All dimensions are for chains in POM material.

	Width (W)		Base material & color	Roller material & color	Pin material	Weight	
	mm	in				kg/m	lb/ft
<b>K750</b>	190.5	7.50	POM-LF <b>BR</b>	POM-LF <b>BR</b>	<b>SS304</b>	5.1	3.43
<b>K1000</b>	254.0	10.00	-	-	-	-	-
<b>K1200</b>	304.8	12.00	POM-LF <b>BR</b>	POM-LF <b>BR</b>	<b>SS304</b>	8.3	5.58

Non standard material and color: See uni Material and Color Overview.

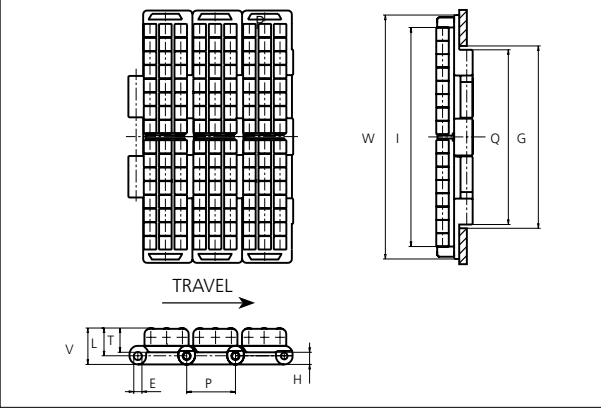
Non standard pin material: See uni Material and Color Overview.

STRAIGHT RUNNING

PITCH 38.1 MM/1.50 IN

# Special Plastic Chain

Series **uni 821** Type **PRR4**



**Special Plastic Chain**  
 Straight running chain  
 Pitch: 38.1 mm (1.50 in)  
 Backflex radius:  
 225.0 mm (8.90 in)  
 Permissible tensile strength:  
 POM material: 3000 N (674 lbf)  
 Standard shipping lengths:  
 boxes of 80 links  
 = 3.048 m (10.0 ft)  
 Axle materials for  $\varnothing 4.0$  mm  
 (0.16 in) accumulation rollers:  
 See uni Material and Color  
 Overview.

NON STANDARD

E		G		H		I (K750)		I (K1000)		I (K1200)		L		P		Q		T		V	
mm	in	mm	in	mm	in	mm	in	mm	in	mm	in	mm	in	mm	in	mm	in	mm	in	mm	in
6.4	0.25	140.0	5.51	9.5	0.37	174.5	6.87	238.0	9.37	288.8	11.37	22.2	0.87	38.1	1.50	136.5	5.37	19.0	0.75	28.5	1.12

All dimensions are for chains in POM material.

	Width (W)		Recommended base material & color	Recommended roller material & color	Recommended pin material	Weight	
	mm	in				kg/m	lb/ft
<b>K750</b>	190.5	7.50	POM-LF <b>BR</b>	POM-D <b>K</b>	<b>SS304</b>	6.9	4.64
<b>K1000</b>	254.0	10.00	POM-LF <b>BR</b>	POM-D <b>K</b>	<b>SS304</b>	8.8	5.91
<b>K1200</b>	304.8	12.00	POM-LF <b>BR</b>	POM-D <b>K</b>	<b>SS304</b>	10.2	6.85

Non standard material and color: See uni Material and Color Overview.  
 Non standard pin material: See uni Material and Color Overview.

STRAIGHT RUNNING

PITCH 38.1 MM/1.50 IN



### Sprocket

No. of teeth	Pitch diameter		Overall diameter		Min. ø bore		Max. ø bore		Hub-diameter		Dimension A		Dimension B		Molded Cast Iron	Machined PA6
	mm	in	mm	in	mm	in	mm	in	mm	in	mm	in	mm	in		
Z19	117.3	4.62	117.0	4.61	20.0	0.79	70.0	2.76	0	0	58.7	2.31	64.5	2.54	✓	✓
Z21	129.2	5.09	130.0	5.12	20.0	0.79	70.0	2.76	0	0	65.0	2.56	70.5	2.78	✓	✓
Z23	141.2	5.56	142.0	5.59	20.0	0.79	70.0	2.76	0	0	71.2	2.80	76.5	3.01	✓	✓
Z25	153.2	6.03	155.0	6.10	20.0	0.79	70.0	2.76	0	0	77.4	3.05	82.5	3.25	✓	✓
Z27	165.2	6.50	167.0	6.57	20.0	0.79	100.0	3.93	0	0	83.6	3.29	88.5	3.48	✓	✓
Z29	177.2	6.98	179.0	7.05	20.0	0.79	110.0	4.33	0	0	89.8	3.54	94.6	3.72	✓	✓
Z31	189.3	7.45	192.0	7.56	20.0	0.79	120.0	4.72	0	0	95.9	3.78	100.6	3.96	✓	✓

### Two part sprocket

No. of teeth	Pitch diameter		Overall diameter		Min. ø bore		Max. ø bore		Hub-diameter		Dimension A		Dimension B		Molded PA6 LG
	mm	in	mm	in	mm	in	mm	in	mm	in	mm	in	mm	in	
Z25	153.2	6.03	155.0	6.10	30.0	1.18	40.0	1.57	58.0	2.28	77.4	3.05	82.5	3.25	✓

Non standard material and color:  
See uni Material and Color Overview.

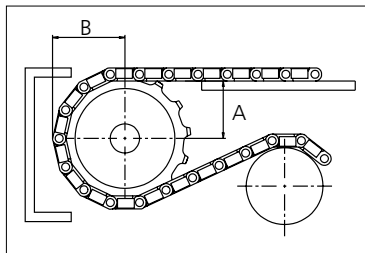
Cast iron sprocket



Machined sprocket



Molded two part sprocket



Please ensure that sufficient size shaft and keyway are chosen for corresponding load.

Other sprocket sizes are available upon request

Width of tooth: 79.4 mm (3.13 in)

Width of sprocket: 79.4 mm (3.13 in)

uni Retainer Rings: See uni Retainer Ring data sheet

uni Idler: See uni Idler data sheet

uni Guide Rings can be mounted on cast iron and machined sprockets. See uni Guide Rings data sheet

This information is subject to alteration due to continuous development. Ammeraal Beltech will not be held liable for the incorrect use of the above stated information. This information replaces previous information. All activities performed and services rendered by Ammeraal Beltech are subject to general terms and conditions of sale and delivery, as applied by its operating companies.