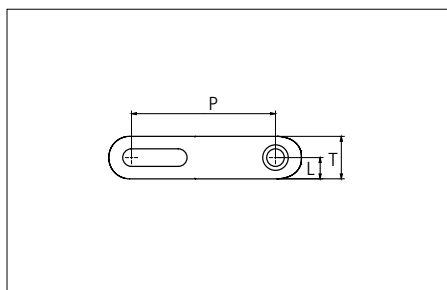


Plastic Modular Belt

Series **uni Flex L-OSB** Type **65% Open (Radius 1.6)**



Sideflexing belt
 Nominal pitch: 50.8 mm (2.00 in)
 Surface type: Open
 Surface opening: 65%
 Backflex radius: 65.0 mm (2,56 in)
 Pin diameter: 6.0 mm (0.24 in)
 Min. inside radius: R1.6 x belt width

Belt material & color	POM-D B	PP B		mm	in		mm	in
			P (Nominal)	50.8	2.00	T	15.0	0.59
Pin and lock material & color	PA6.6 B		L	7.5	0.29	-	-	-

Non standard material and color: See uni Material and Color Overview.
 Alternative pin and lock systems and materials: Contact Customer Service.

Belt width		Permissible tensile force (Belt/pin material)								Belt weight (Belt/pin material)				*Min. No. drive sprocket per shaft	Number of wear strips (Min. No.)	
		POM-D/PA6.6				PP/PA6.6				POM-D/PA6.6		PP/PA6.6			**Carry (pcs)	**Return (pcs)
		Straight sections		Curve sections		Straight sections		Curve sections		kg/m	lb/ft	kg/m	lb/ft			
mm	in	N	lbf	N	lbf	N	lbf	N	lbf	kg/m	lb/ft	kg/m	lb/ft			
608	23.9	8579	1929	2500	562	6572	1477	1600	360	3.9	2.63	2.9	1.94	5	5	3
659	25.9	9110	2048	2500	562	6990	1571	1600	360	4.2	2.85	3.1	2.10	5	5	3
710	28.0	9640	2167	2500	562	7408	1665	1600	360	4.6	3.07	3.4	2.26	5	5	3
761	30.0	10171	2286	2500	562	7826	1759	1600	360	4.9	3.29	3.6	2.42	7	6	3
811	31.9	10691	2403	2500	562	8236	1852	1600	360	5.2	3.51	3.8	2.58	7	6	3
862	33.9	11221	2523	2500	562	8655	1946	1600	360	5.6	3.73	4.1	2.75	7	6	3
913	35.9	11751	2642	2500	562	9073	2040	1600	360	5.9	3.95	4.3	2.91	7	7	4
964	38.0	12282	2761	2500	562	9491	2134	1600	360	6.2	4.17	4.6	3.07	7	7	4
1014	39.9	12802	2878	2500	562	9901	2226	1600	360	6.5	4.39	4.8	3.23	7	7	4
1065	41.9	13332	2997	2500	562	10319	2320	1600	360	6.9	4.61	5.0	3.39	9	8	4
1116	43.9	13863	3116	2500	562	10737	2414	1600	360	7.2	4.83	5.3	3.56	9	8	4
1167	45.9	14393	3236	2500	562	11156	2508	1600	360	7.5	5.05	5.5	3.72	9	8	4
1217	47.9	14913	3352	2500	562	11566	2600	1600	360	7.8	5.27	5.8	3.88	9	9	5
1268	49.9	15443	3472	2500	562	11984	2694	1600	360	8.2	5.49	6.0	4.04	9	9	5
1319	51.9	15974	3591	2500	562	12402	2788	1600	360	8.5	5.71	6.3	4.20	9	9	5
1370	53.9	16504	3710	2500	562	12820	2882	1600	360	8.8	5.93	6.5	4.36	11	10	5
1420	55.9	17024	3827	2500	562	13230	2974	1600	360	9.1	6.15	6.7	4.52	11	10	5
1471	57.9	17555	3946	2500	562	13648	3068	1600	360	9.5	6.37	7.0	4.69	11	10	5
1522	59.9	18085	4066	2500	562	14067	3162	1600	360	9.8	6.59	7.2	4.85	11	11	6



Additional non-standard belt widths are available upon request.
 General belt tolerance is +0/-0.4% at 23°C/73°F. For exact belt width contact Customer Service.
 *Max. Load per Drive Sprocket. Belt material: POM-D 1000 N (225 lbf), PP 550 N (123 lbf).
 **Max. Spacing between wear strips, Carry: 152.0 mm (6.00 in); return: 304.0 mm (12.00 in).
 Belt needs support rollers or flanged rollers at each belt edge for support.

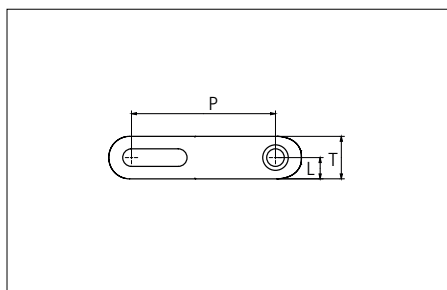
STANDARD

SIDE FLEXING

PITCH 50.8 MM/2.00 IN

Plastic Modular Belt

Series **uni Flex L-OSB** Type **65% Open (Radius 2.2)**



Sideflexing belt
 Nominal pitch: 50.8 mm (2.00 in)
 Surface type: Open
 Surface opening: 65%
 Backflex radius: 65.0 mm (2,56 in)
 Pin diameter: 6.0 mm (0.24 in)
 Min. inside radius: R2.2 x belt width

Belt material & color	POM-D B	PP B		mm	in		mm	in	
				P (Nominal)	50.8	2.00	T	15.0	0.59
Pin and lock material & color	PA6.6 B			L	7.5	0.29	-	-	-

Non standard material and color: See uni Material and Color Overview.
 Alternative pin and lock systems and materials: Contact Customer Service.

Belt width		Permissible tensile force (Belt/pin material)								Belt weight (Belt/pin material)				*Min. No. drive sprocket per shaft	Number of wear strips (Min. No.)	
		POM-D/PA6.6				PP/PA6.6				POM-D/PA6.6		PP/PA6.6			**Carry (pcs)	**Return (pcs)
		Straight sections		Curve sections		Straight sections		Curve sections		kg/m	lb/ft	kg/m	lb/ft			
mm	in	N	lbf	N	lbf	N	lbf	N	lbf	kg/m	lb/ft	kg/m	lb/ft			
305	12.0	5429	1220	3300	742	4087	919	2080	468	2.0	1.36	1.5	0.99	3	3	2
407	16.0	6490	1459	3300	742	4923	1107	2080	468	2.7	1.82	2.0	1.32	3	3	2
509	20.0	7551	1697	3300	742	5760	1295	2080	468	3.4	2.27	2.5	1.65	5	4	2
610	24.0	8601	1934	3300	742	6588	1481	2080	468	4.1	2.72	2.9	1.98	5	5	3
712	28.0	9662	2172	3300	742	7424	1669	2080	468	4.7	3.18	3.4	2.31	5	5	3
813	32.0	10712	2408	3300	742	8253	1855	2080	468	5.4	3.63	3.9	2.64	7	6	3
915	36.0	11773	2647	3300	742	9089	2043	2080	468	6.1	4.08	4.4	2.97	7	7	4
1016	40.0	12823	2883	3300	742	9917	2229	2080	468	6.7	4.53	4.9	3.30	7	7	4
1118	44.0	13884	3121	3300	742	10754	2417	2080	468	7.4	4.99	5.4	3.63	9	8	4
1219	48.0	14935	3357	3300	742	11582	2604	2080	468	8.1	5.44	5.9	3.96	9	9	5
1321	52.0	15995	3596	3300	742	12418	2792	2080	468	8.8	5.89	6.4	4.29	9	9	5
1422	56.0	17046	3832	3300	742	13246	2978	2080	468	9.4	6.35	6.9	4.62	11	10	5
1524	60.0	18107	4070	3300	742	14083	3166	2080	468	10.1	6.80	7.4	4.95	11	11	6
1626	64.0	19167	4309	3300	742	14919	3354	2080	468	10.8	7.26	7.9	5.28	11	11	6
1727	68.0	20218	4545	3300	742	15747	3540	2080	468	11.5	7.71	8.3	5.61	13	12	6

Additional standard belt widths are available in steps of 101.6 mm (4.00 in). Additional non-standard belt widths are available in steps of mm 50.8 (2.00 in).


1930	76.0	22329	5020	3300	742	17412	3914	2080	468	12.8	8.61	9.3	6.26	13	13	7
------	------	-------	------	------	-----	-------	------	------	-----	------	------	-----	------	----	----	---

General belt tolerance is +0/-0.4% at 23°C/73°F. For exact belt width contact Customer Service.

*Max load per Drive Sprocket. Belt material: POM-D 1000 N (225 lbf), PP 550 N (123 lbf).

**Max spacing between wear strips, Carry: 152.0 mm (6.00 in); Return: 304.0 mm (12.00 in).

Belt needs support rollers or flanged rollers at each belt edge for support.

 = Single Link



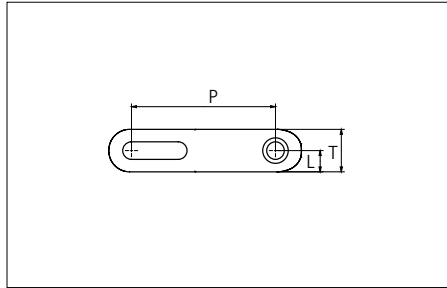
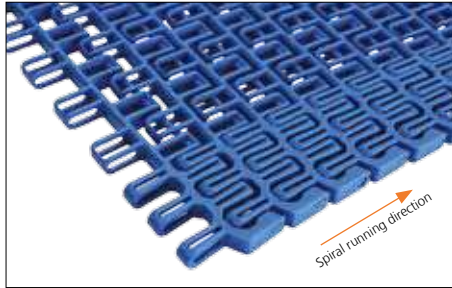
STANDARD

SIDE FLEXING

PITCH 50.8 MM/2.00 IN

Plastic Modular Belt

Series **uni Flex L-OSB** Type **65% Open (Radius 2.5/3.0/3.5/4.0)**



Sideflexing belt
 Nominal pitch: 50.8 mm (2.00 in)
 Surface type: Open
 Surface opening: 65%
 Backflex radius: 65.0 mm (2,56 in)
 Pin diameter: 6.0 mm (0.24 in)
 Min. inside radius:
 2.5 / 3.0 / 3.5 / 4.0 x belt width

Recommended Belt material & color	POM-D B	mm	in		mm	in
Recommended Pin material & color	PA6.6 B	P (Nominal)	50.8	2.00	T	15.0 / 0.59
		L	7.5	0.29	-	- / -

Non standard material and color: See uni Material and Color Overview.
 Alternative pin and lock systems and materials: Contact Customer Service.

Belt width		Permissible tensile force (Belt/pin material)								Belt weight (Belt/pin material)				*Min. No. drive sprocket per shaft	Number of wear strips (Min. No.)	
		POM-D/PA6.6				PP/PA6.6				POM-D/PA6.6		PP/PA6.6			Carry (pcs)	Return (pcs)
		Straight sections		Curve sections		Straight sections		Curve sections		kg/m	lb/ft	kg/m	lb/ft			
mm	in	N	lbf	N	lbf	N	lbf	N	lbf	kg/m	lb/ft	kg/m	lb/ft			
305	12.0	5429	1220	3300	742	4087	919	2080	468	2.0	1.36	1.5	0.99	3	3	2
407	16.0	6490	1459	3300	742	4923	1107	2080	468	2.7	1.82	2.0	1.32	3	3	2
509	20.0	7551	1697	3300	742	5760	1295	2080	468	3.4	2.27	2.5	1.65	5	4	2
610	24.0	8601	1934	3300	742	6588	1481	2080	468	4.1	2.72	2.9	1.98	5	5	3
712	28.0	9662	2172	3300	742	7424	1669	2080	468	4.7	3.18	3.4	2.31	5	5	3
813	32.0	10712	2408	3300	742	8253	1855	2080	468	5.4	3.63	3.9	2.64	7	6	3
915	36.0	11773	2647	3300	742	9089	2043	2080	468	6.1	4.08	4.4	2.97	7	7	4
1016	40.0	12823	2883	3300	742	9917	2229	2080	468	6.7	4.53	4.9	3.30	7	7	4
1118	44.0	13884	3121	3300	742	10754	2417	2080	468	7.4	4.99	5.4	3.63	9	8	4
1219	48.0	14935	3357	3300	742	11582	2604	2080	468	8.1	5.44	5.9	3.96	9	9	5
1321	52.0	15995	3596	3300	742	12418	2792	2080	468	8.8	5.89	6.4	4.29	9	9	5
1422	56.0	17046	3832	3300	742	13246	2978	2080	468	9.4	6.35	6.9	4.62	11	10	5

Additional standard belt widths are available in steps of 101.6 mm (4.00 in). Additional non-standard belt widths are available in steps of 50.8 mm (2.00 in).

General belt tolerance is +0/-0.4% at 23°C/73°F. For exact belt width contact Customer Service. Non standard belt width on request.

*Max. Load per Drive Sprocket. Belt material: POM-D 1000 N (225 lbf), PP 550 N (123 lbf).

Belt needs support rollers or flanged rollers at each belt edge for support.

= Single Link



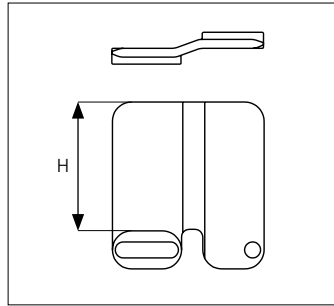
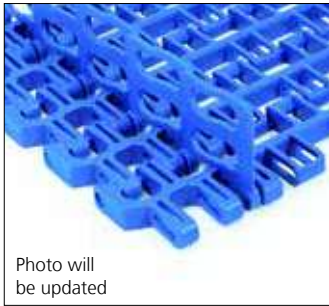
NON STANDARD

SIDE FLEXING

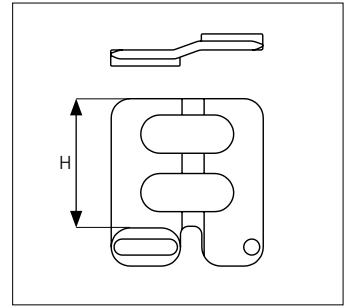
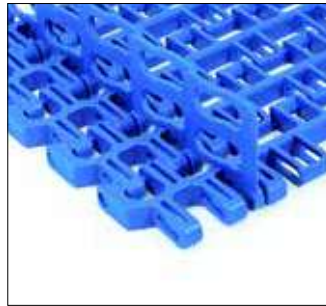
PITCH 50.8 MM/2.00 IN

Accessories

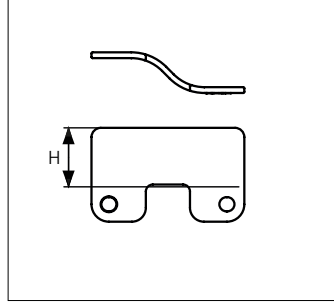
Side Guard Closed



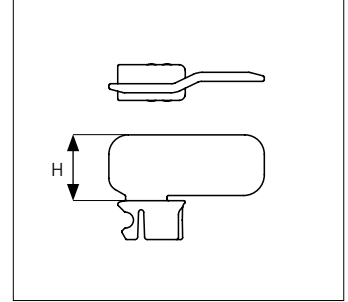
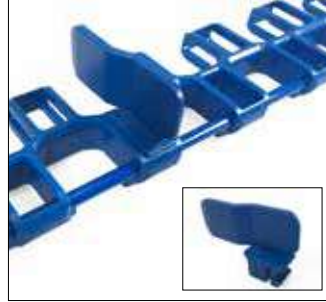
Side Guard Open



Side Guard Outside Closed



Side Guard Snap-On Closed



Type	Material & color	H	
		mm	in
Side Guard Closed	POM-D B	10.0	0.39
		25.4	1.00
		50.0	1.97
Side Guard Open		50.0	1.97
Side Guard Outside Closed		25.4	1.00
Side Guard Snap-On Closed	25.4	1.00	

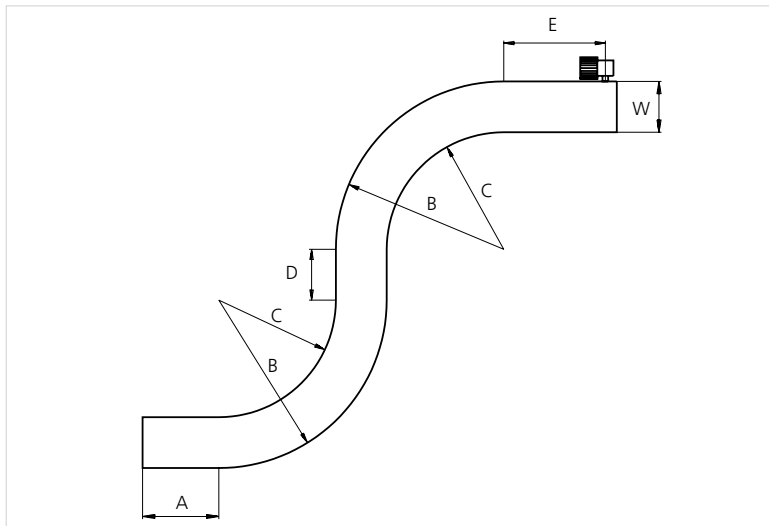
Indent for Side Guard Closed and Side Guard Open: 55.0 mm (2.17 in) or 80.0 mm (3.15 in).

Min/max indent for Side Guard Outside Closed: 10.0 mm (0.39 in).

Min indent for Side Guard Snap-On Closed: 175.0 mm (6.89 in) and Increment 50.8 mm (2.00 in).

Non Standard material and color: See uni Material and Color Overview.

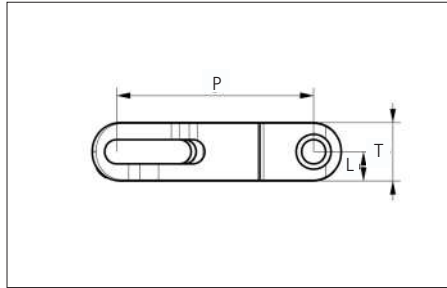
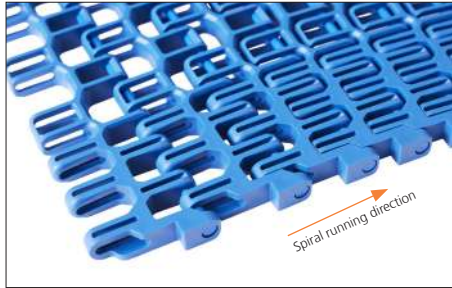
Design Guidelines



	uni Flex L-OSB 65% Open Radius 2.2
A	min. 1.5 x W
B	min 3.2 x W
C	min 2.2 x W
D	min 2 x W
E	min 2 x W, min.
W	Belt width

Plastic Modular Belt

Series **uni Flex L-OSB Direct Drive** Type **65% Open**



Sideflexing belt
 Nominal pitch: 50.8 mm (2.00 in)
 Surface type: Open
 Surface opening: 65%
 Backflex radius: 65.0 mm (2,56 in)
 Pin diameter: 6.0 mm (0.24 in)
 The usable collapse factor depends on the belt width

Belt material & color	POM-D B		mm	in		mm	in
		P (Nominal)	50.8	2.00	T	15.0	0.59
Pin and lock material & color	PA6.6 B	L	7.5	0.29	-	-	-

Non standard material and color: See uni Material and Color Overview.
 Alternative pin and lock systems and materials: Contact Customer Service.

Belt width		Permissible tensile force (Belt/pin material)				Belt weight (Belt/pin material)		*Min. no. drive sprocket per shaft	Number of wear strips (Min. No.)	
		POM-D/PA6.6				POM-D/PA6.6			Carry (pcs)	Return (pcs)
		Straight sections		Curve sections		kg/m	lb/ft			
mm	in	N	lbf	N	lbf					
608	23.9	8579	1929	2500	562	3.9	2.63	5	3	3
659	25.9	9110	2048	2500	562	4.2	2.85	5	3	3
710	28.0	9640	2167	2500	562	4.6	3.07	5	3	3
761	30.0	10171	2286	2500	562	4.9	3.29	7	3	3
811	31.9	10691	2403	2500	562	5.2	3.51	7	3	3
862	33.9	11221	2523	2500	562	5.6	3.73	7	3	3
913	35.9	11751	2642	2500	562	5.9	3.95	7	3	3
964	38.0	12282	2761	2500	562	6.2	4.17	7	3	3
1014	39.9	12802	2878	2500	562	6.5	4.39	7	3	3
1065	41.9	13332	2997	2500	562	6.9	4.61	9	3	3
1116	43.9	13863	3116	2500	562	7.2	4.83	9	4	4
1167	45.9	14393	3236	2500	562	7.5	5.05	9	4	4
1217	47.9	14913	3352	2500	562	7.8	5.27	9	4	4
1268	49.9	15443	3472	2500	562	8.2	5.49	9	4	4
1319	51.9	15974	3591	2500	562	8.5	5.71	9	4	4
1370	53.9	16504	3710	2500	562	8.8	5.93	11	4	4
1420	55.9	17024	3827	2500	562	9.1	6.15	11	4	4
1471	57.9	17555	3946	2500	562	9.5	6.37	11	4	4
1522	59.9	18085	4066	2500	562	9.8	6.59	11	4	4

Additional non-standard belt widths are available upon request.
 General belt tolerance is +0/-0.4% at 23°C/73°F. For exact belt width contact Customer Service.
 *Max. Load per Drive Sprocket. Belt material: POM-D 1000 N (225 lbf).
 Belt needs support rollers or flanged rollers at each belt edge for support.



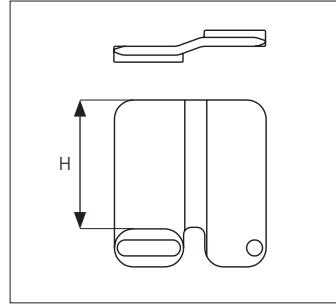
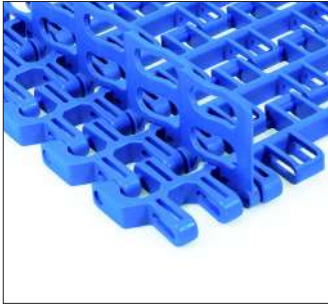
STANDARD

SIDE FLEXING

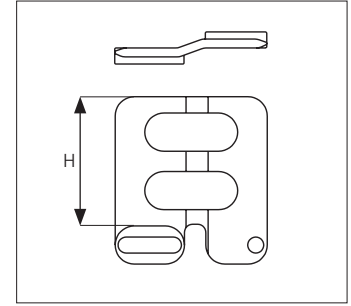
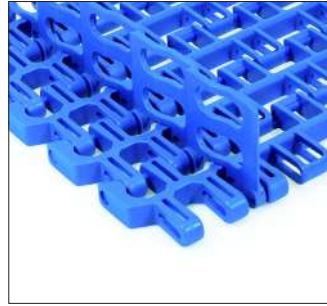
PITCH 50.8 MM/2.00 IN

Accessories

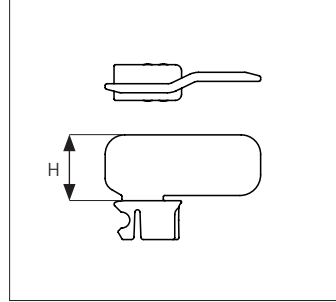
Side Guard Closed



Side Guard Open



Side Guard Snap-On Closed



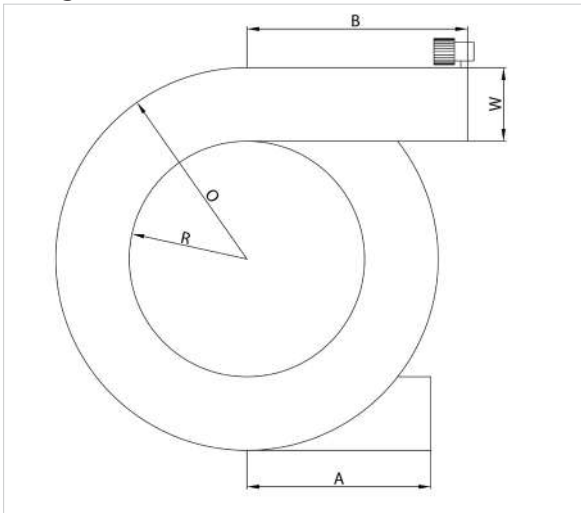
Type	Material & color	H	
		mm	in
Side Guard Closed	POM-D B	10.0	0.39
		25.4	1.00
		50.0	1.97
Side Guard Open		50.0	1.97
Side Guard Snap-On Closed		25.4	1.00

Indent for Side Guard Open: 55.0 mm (2.17 in) or 80.0 mm (3.15 in).

Min indent for Side Guard Snap-On Closed: 175.0 mm (6.89 in) and Increment 50.8 mm (2.00 in).

Non Standard material and color: See uni Material and Color Overview.

Design Guidelines



uni Flex L-OSB Direct Drive 65% Open Radius	
A	min. 1.5 x W
B	min 2.0 x W
R	R = Collapse Factor x W
O	O = R + W
W	Belt width

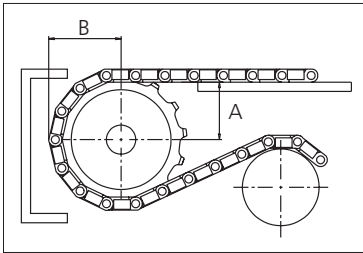
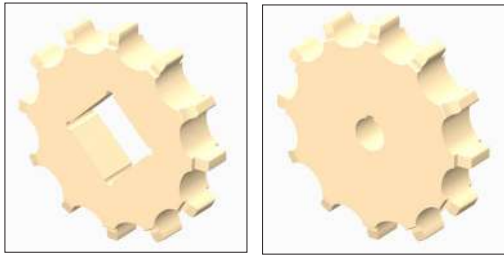
Belt width		Min. drum diameter		Min. Collapse Factor
mm	in	mm	in	
608	23.9	1946	76.6	1.60
659	25.9	2109	83.0	1.60
710	28.0	2272	89.4	1.60
761	30.0	2510	98.8	1.65
811	31.9	2676	105.4	1.65
862	33.9	2845	112.0	1.65
913	35.9	3104	122.2	1.70
964	38.0	3278	129.1	1.70
1014	39.9	3448	135.7	1.70
1065	41.9	3621	142.7	1.70
1116	43.9	3794	149.4	1.70
1167	45.9	3968	156.2	1.70
1217	47.9	4138	162.9	1.70
1268	49.9	4311	169.7	1.70
1319	51.9	4748	186.9	1.80
1370	53.9	4932	194.2	1.80
1420	55.9	5112	201.3	1.80
1471	57.9	5296	208.5	1.80
1522	59.9	5480	215.7	1.80

Sprocket

No. of teeth	Bore size								Overall diameter		Pitch diameter		Hub diameter		Dimension A		Dimension B		Single row/Two way	Machined 	
	Pilot Bore	1.00		1.25		1.50		2.50													
	mm	in	mm	in	mm	in	mm	in	mm	in	mm	in	mm	in	mm	in					
Z08	✓		●	●						134.6	5.30	131.5	5.18	107.6	4.23	54.4	2.15	74.9	2.95	✓	✓
Z10	✓		●	●	●					168.3	6.63	164.0	6.46	141.3	5.56	71.4	2.81	90.8	3.57	✓	✓
Z12	✓		●	●	●	●	●	■		203.5	8.01	196.5	7.74	176.5	6.94	88.2	3.47	106.8	4.20	✓	✓
Z15	✓		●	●	●	●	●	■		253.4	9.98	245.4	9.66	226.4	8.91	113.2	4.46	131.0	5.16	✓	✓

■ Machined sprocket

● Machined sprocket



Other sprocket sizes are available upon request
 Two-part sprocket are available upon request
 Other bore sizes are available upon request
 uni Retainer Rings: See uni Retainer Ring data sheet
 Width of tooth = 30.0 mm (1.18 in)
 Width of sprocket = 40.0 mm (1.57 in)

Max. load per sprocket shown does not take bore size into account.
 Please also ensure that sufficient size shaft is chosen for corresponding load.

For correct sprocket position: See uni Assembly Instructions for uni Flex L-OSB Direct Drive.

Due to belt construction sprocket positioning close to belt edge is not possible, use rollers to support belt edges.



Non standard material and color: See uni Material and Color Overview.