

Paso de 50.8 mm (2.00 pulgadas)



uni Flex L-ASB

Esta nueva generación de bandas curvas de paso de 2 pulgadas que se encuentra disponible con o sin lengüetas de sujeción presenta un diseño único patentado que proporciona una banda curva muy fuerte. Se encuentra asimismo disponible una versión con un radio de giro más ajustado denominada uni Flex L-ASB R. Esta nueva generación resulta más fácil de limpiar y, con el material POM-D, presenta unas buenas características de separación. La mayor estabilidad lateral permite la utilización de menos tiras de soporte de lo que es habitual en otras bandas. El diseño higiénico de esta banda recta y de giro lateral hace que resulte la banda de procesamiento ideal en aplicaciones

de enfriamiento, congelación, secado o fermentadores. La uni Flex L-ASB es una banda comprobada en aplicaciones espirales.

La Serie uni Flex L-ASB mejora el funcionamiento de las siguientes industrias/aplicaciones:

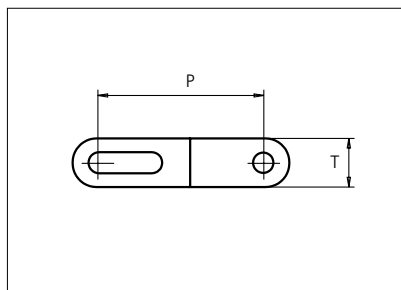
- Panadería, incluyendo manipulado de bandejas, líneas de enfriamiento, transporte interno y líneas de envasado cuando se requiere una fuerza elevada de la banda
- Cárnica y avícola, incluyendo líneas de empaquetado
- Aplicaciones espirales
- Industria del mueble

Características del producto:

- Material de POM-D estándar que contiene un componente autolubricante, mejores características antiadherentes y reducción de la fricción
- Fácil de limpiar gracias a un diseño higiénico de las bisagras
- Aplicación de radio ajustado que reduce los requisitos de espacio
- Se requieren menos tiras de soporte gracias a la mayor estabilidad lateral
- Disponible con unos factores de colapso de 2.2 y 1.6

Plastic Modular Belt

Series **uni Flex L-ASB-R** Type **47% Open (Radius 1.6)**

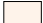


Sideflexing belt
 Nominal pitch: 50.8 mm (2.00 in)
 Surface type: Flat
 Surface opening: 47%
 Backflex radius: 100.0 mm (3.94 in)
 Pin diameter: 6.0 mm (0.24 in)
 Min. inside radius: 1.6 x belt width

| Belt material & color | POM-D B W | PP B W | | | |
|-------------------------------|-------------------------|----------------------|-------------|------|------|
| | | | mm | in | |
| Pin and lock material & color | PA6.6 B | | P (Nominal) | 50.8 | 2.00 |
| | | | T | 15.0 | 0.59 |

Non standard material and color: See uni Material and Color Overview.
 Alternative pin and lock systems and materials: Contact Customer Service.

| Belt width | | Permissible tensile force (Belt/pin material) | | | | | | | | Belt weight (Belt/pin material) | | | | *Min. No. drive sprocket per shaft | Number of wear strips (Min. No.) | |
|------------|------|---|------|----------------|-----|-------------------|------|----------------|-----|---------------------------------|-------|----------|-------|------------------------------------|----------------------------------|----------------|
| | | POM-D/PA6.6 | | | | PP/PA6.6 | | | | POM-D/PA6.6 | | PP/PA6.6 | | | **Carry (pcs) | **Return (pcs) |
| | | Straight sections | | Curve sections | | Straight sections | | Curve sections | | kg/m | lb/ft | kg/m | lb/ft | | | |
| mm | in | N | lbf | N | lbf | N | lbf | N | lbf | kg/m | lb/ft | kg/m | lb/ft | | | |
| 250 | 9.8 | 10000 | 2248 | 2440 | 549 | 5000 | 1124 | 1440 | 324 | 2.5 | 1.65 | 1.5 | 1.01 | 2 | 2 | 2 |
| 326 | 12.8 | 13040 | 2931 | 2440 | 549 | 6520 | 1466 | 1440 | 324 | 3.2 | 2.15 | 2.0 | 1.31 | 3 | 3 | 2 |
| 403 | 15.9 | 16120 | 3624 | 3110 | 699 | 8060 | 1812 | 1960 | 441 | 3.9 | 2.65 | 2.4 | 1.63 | 3 | 3 | 2 |
| 479 | 18.9 | 19160 | 4307 | 3110 | 699 | 9580 | 2154 | 1960 | 441 | 4.7 | 3.15 | 2.9 | 1.93 | 5 | 4 | 2 |
| 555 | 21.9 | 22200 | 4991 | 3110 | 699 | 11100 | 2495 | 1960 | 441 | 5.4 | 3.66 | 3.3 | 2.24 | 5 | 4 | 2 |
| 631 | 24.8 | 25240 | 5674 | 3110 | 699 | 12620 | 2837 | 1960 | 441 | 6.2 | 4.16 | 3.8 | 2.54 | 5 | 5 | 3 |
| 708 | 27.9 | 28320 | 6366 | 3110 | 699 | 14160 | 3183 | 1960 | 441 | 6.9 | 4.66 | 4.2 | 2.85 | 5 | 5 | 3 |
| 784 | 30.9 | 31360 | 7050 | 3110 | 699 | 15680 | 3525 | 1960 | 441 | 7.7 | 5.16 | 4.7 | 3.16 | 7 | 6 | 3 |
| 860 | 33.9 | 34400 | 7733 | 3110 | 699 | 17200 | 3867 | 1960 | 441 | 8.4 | 5.66 | 5.2 | 3.47 | 7 | 6 | 3 |
| 936 | 36.9 | 37440 | 8417 | 3110 | 699 | 18720 | 4208 | 1960 | 441 | 9.2 | 6.16 | 5.6 | 3.77 | 7 | 7 | 4 |
| 1013 | 39.9 | 40520 | 9109 | 3110 | 699 | 20260 | 4554 | 1960 | 441 | 9.9 | 6.67 | 6.1 | 4.08 | 7 | 7 | 4 |
| 1089 | 42.9 | 43560 | 9792 | 3110 | 699 | 21780 | 4896 | 1960 | 441 | 10.7 | 7.17 | 6.5 | 4.39 | 9 | 8 | 4 |

Additional non-standard belt widths are available in steps of 25.4 mm (1.00 in).
 General belt tolerance is +0/-0.4% at 23°C/73°F. For exact belt width contact Customer Service. Non standard belt width on request.
 *Max. Load per Drive Sprocket. Belt material: POM-D 2500 N (562 lbf), PP 1200 N (270 lbf).
 **Max. Spacing between wear strips, Carry: 152.0 mm (6.00 in); Return: 304.0 mm (12.00 in).
 = Single Link



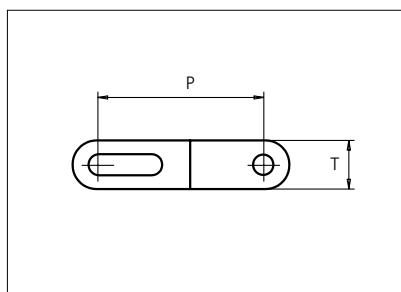
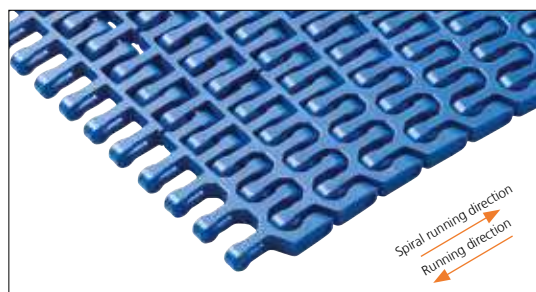
STANDARD

SIDE FLEXING

PITCH 50.8 MM/2.00 IN

Plastic Modular Belt

Series **uni Flex L-ASB** Type **47% Open (Radius 2.2)**



Sideflexing belt
 Nominal pitch: 50.8 mm (2.00 in)
 Surface type: Flat
 Surface opening: 47%
 Backflex radius: 100.0 mm (3.94 in)
 Pin diameter: 6.0 mm (0.24 in)
 Min. inside radius: 2.2 x belt width

| Belt material & color | POM-D B W | PP B W | | | |
|-------------------------------|-------------------------|----------------------|-------------|------|------|
| | | | mm | in | |
| Pin and lock material & color | PA6.6 B | | P (Nominal) | 50.8 | 2.00 |
| | | | T | 15.0 | 0.59 |

Non standard material and color: See uni Material and Color Overview.
 Alternative pin and lock systems and materials: Contact Customer Service.

| Belt width | | Permissible tensile force (Belt/pin material) | | | | | | | | Belt weight (Belt/pin material) | | | | *Min. No. drive sprocket per shaft | Number of wear strips (Min. No.) | |
|------------|------|---|------|----------------|-----|-------------------|------|----------------|-----|---------------------------------|-------|----------|-------|------------------------------------|----------------------------------|----------------|
| | | POM-D/PA6.6 | | | | PP/PA6.6 | | | | POM-D/PA6.6 | | PP/PA6.6 | | | **Carry (pcs) | **Return (pcs) |
| | | Straight sections | | Curve sections | | Straight sections | | Curve sections | | kg/m | lb/ft | kg/m | lb/ft | | | |
| mm | in | N | lbf | N | lbf | N | lbf | N | lbf | kg/m | lb/ft | kg/m | lb/ft | | | |
| 250 | 9.8 | 10000 | 2248 | 2440 | 549 | 5000 | 1124 | 1440 | 324 | 2.5 | 1.65 | 1.5 | 1.01 | 2 | 2 | 2 |
| 326 | 12.8 | 13040 | 2931 | 2440 | 549 | 6520 | 1466 | 1440 | 324 | 3.2 | 2.15 | 2.0 | 1.31 | 3 | 3 | 2 |
| 403 | 15.9 | 16120 | 3624 | 3110 | 699 | 8060 | 1812 | 1960 | 441 | 3.9 | 2.65 | 2.4 | 1.63 | 3 | 3 | 2 |
| 479 | 18.9 | 19160 | 4307 | 3110 | 699 | 9580 | 2154 | 1960 | 441 | 4.7 | 3.15 | 2.9 | 1.93 | 5 | 4 | 2 |
| 555 | 21.9 | 22200 | 4991 | 3110 | 699 | 11100 | 2495 | 1960 | 441 | 5.4 | 3.66 | 3.3 | 2.24 | 5 | 4 | 2 |
| 631 | 24.8 | 25240 | 5674 | 3110 | 699 | 12620 | 2837 | 1960 | 441 | 6.2 | 4.16 | 3.8 | 2.54 | 5 | 5 | 3 |
| 708 | 27.9 | 28320 | 6366 | 3110 | 699 | 14160 | 3183 | 1960 | 441 | 6.9 | 4.66 | 4.2 | 2.85 | 5 | 5 | 3 |
| 784 | 30.9 | 31360 | 7050 | 3110 | 699 | 15680 | 3525 | 1960 | 441 | 7.7 | 5.16 | 4.7 | 3.16 | 7 | 6 | 3 |
| 860 | 33.9 | 34400 | 7733 | 3110 | 699 | 17200 | 3867 | 1960 | 441 | 8.4 | 5.66 | 5.2 | 3.47 | 7 | 6 | 3 |
| 936 | 36.9 | 37440 | 8417 | 3110 | 699 | 18720 | 4208 | 1960 | 441 | 9.2 | 6.16 | 5.6 | 3.77 | 7 | 7 | 4 |
| 1013 | 39.9 | 40520 | 9109 | 3110 | 699 | 20260 | 4554 | 1960 | 441 | 9.9 | 6.67 | 6.1 | 4.08 | 7 | 7 | 4 |
| 1089 | 42.9 | 43560 | 9792 | 3110 | 699 | 21780 | 4896 | 1960 | 441 | 10.7 | 7.17 | 6.5 | 4.39 | 9 | 8 | 4 |

Additional standard belt widths are available in steps of 76.2 mm (3.00 in). Additional non-standard belt widths are available in steps of 25.4 mm (1.00 in).

| | | | | | | | | | | | | | | | | |
|------|------|-------|-------|------|-----|-------|------|------|-----|------|-------|------|------|----|----|---|
| 1699 | 66.9 | 67960 | 15277 | 3110 | 699 | 33980 | 7639 | 1960 | 441 | 16.7 | 11.19 | 10.2 | 6.85 | 13 | 12 | 6 |
|------|------|-------|-------|------|-----|-------|------|------|-----|------|-------|------|------|----|----|---|

Additional standard belt widths are available in steps of 76.2 mm (3.00 in). Additional non-standard belt widths are available in steps of 25.4 mm (1.00 in).

| | | | | | | | | | | | | | | | | |
|------|------|-------|-------|------|-----|-------|------|------|-----|------|-------|------|------|----|----|---|
| 1927 | 75.9 | 77080 | 17328 | 3110 | 699 | 38540 | 8664 | 1960 | 441 | 18.9 | 12.69 | 11.6 | 7.77 | 13 | 13 | 7 |
|------|------|-------|-------|------|-----|-------|------|------|-----|------|-------|------|------|----|----|---|

General belt tolerance is +0/-0.4% at 23°C/73°F. For exact belt width contact Customer Service. Non standard belt width on request.

*Max. Load per Drive Sprocket. Belt material: POM-D 2500 N (562 lbf), PP 1200 N (270 lbf).

**Max. Spacing between wear strips, Carry: 152.0 mm (6.00 in); Return: 304.0 mm (12.00 in).

□ = Single Link



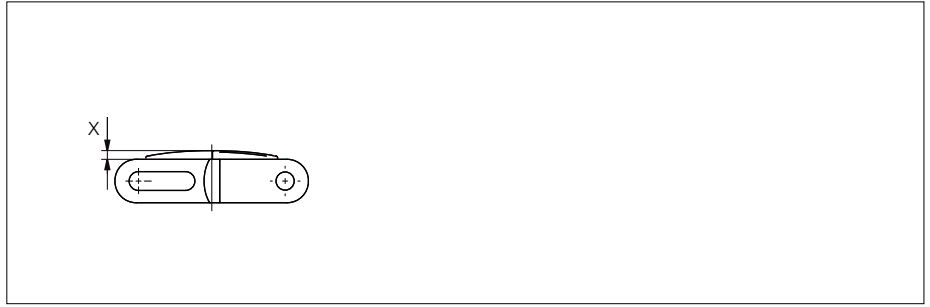
STANDARD

SIDE FLEXING

PITCH 50.8 MM/2.00 IN

Accessories

Rubber Top

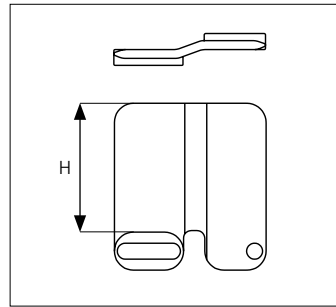
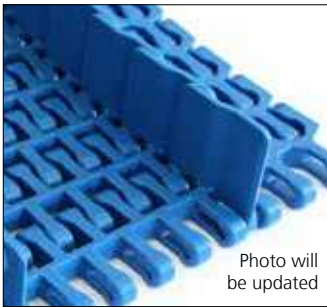


| Type | Belt material & color | Rubber material, hardness & color | X | |
|--------|-----------------------|-----------------------------------|-----|------|
| | | | mm | in |
| Curved | PP B | TPE-S Shore A60 K | 3.0 | 0.12 |

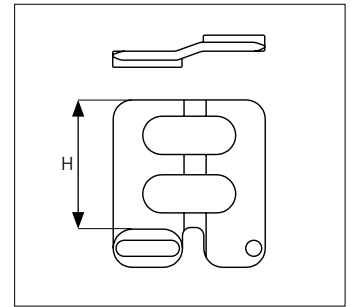
uni Flex L-ASB Rubber Top Radius 2.2: Indent min. 71.0 mm (2.80 in) and Increment 25.4 mm (1.00).

Accessories

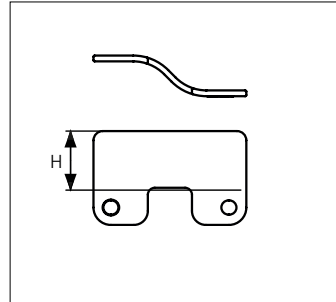
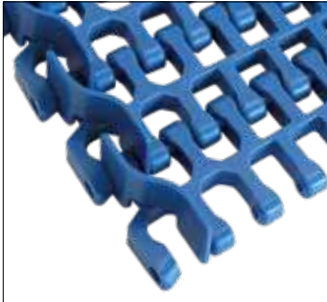
Side Guard Closed



Side Guard Open



Side Guard Outside Closed



| Type | Material & color | H | |
|---------------------------|------------------|------|------|
| | | mm | in |
| Side Guard Closed | POM-D B | 10.0 | 0.39 |
| | | 25.4 | 1.00 |
| | | 50.0 | 1.97 |
| Side Guard Open | | 50.0 | 1.97 |
| Side Guard Outside Closed | | 25.4 | 1.00 |

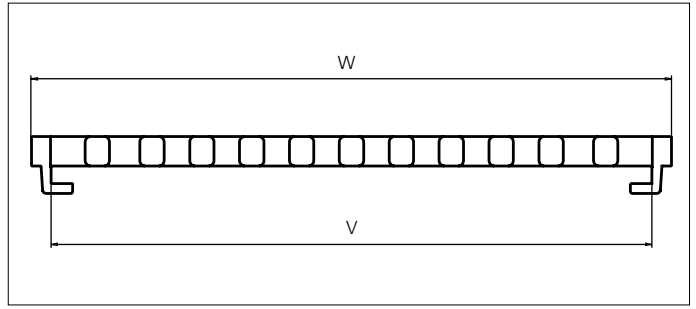
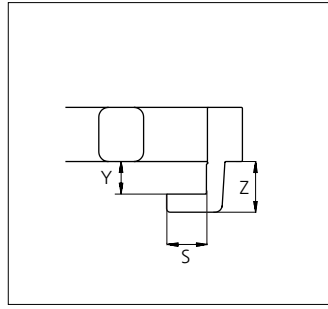
Min. indent for Side Guard Closed and Side Guard Open: 55.0 mm (2.17 in) and Increment 25.4 mm (1.00 in).

Min/max indent for Side Guard Outside Closed: 10.0 mm (0.39 in).

Non Standard material and color: See uni Material and Color Overview.

Accessories

Bottom Tab

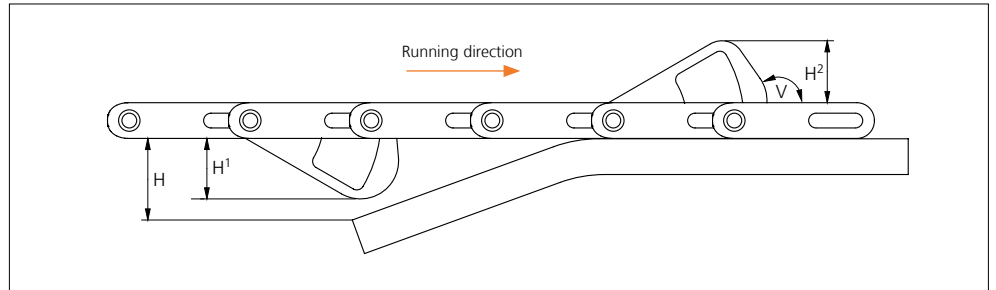
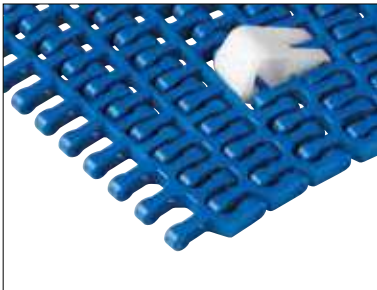


| Type | Bottom Tab material and colors | S | | V | | W | | Y | | Z | |
|----------------|--------------------------------|------|------|-------|-------|-------|-------|-----|------|------|------|
| | | mm | in | mm | in | mm | in | mm | in | mm | in |
| Hold Down Edge | POM-D B W | 11.0 | 0.43 | 306.5 | 12.07 | 325.9 | 12.83 | 9.0 | 0.35 | 14.0 | 0.55 |
| | PP B W | | | | | | | | | | |

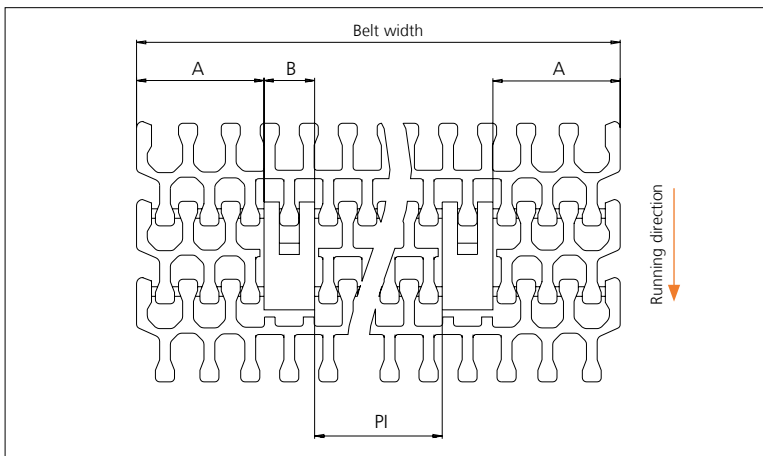
Non Standard material and color: See uni Material and Color Overview.

Accessories

AmFlight



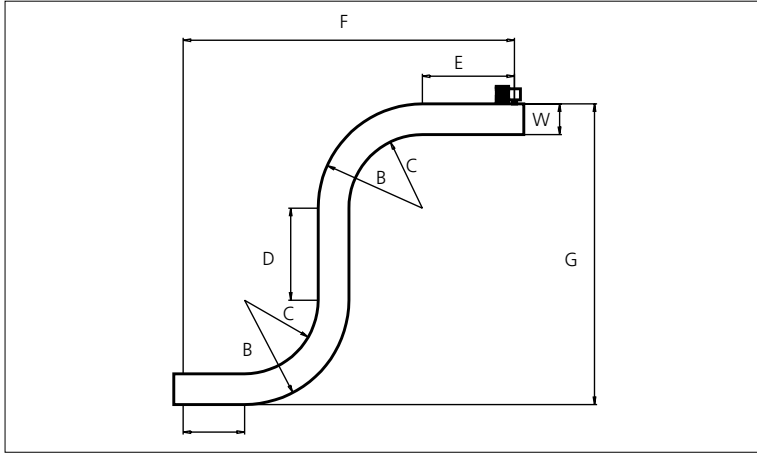
| Type | Material & color | H | H ¹ | | H ² | | V |
|------|------------------|--------------------|----------------|------|----------------|------|------|
| | | | mm | in | mm | in | |
| Push | PE W | H > H ¹ | 25.4 | 1.00 | 26.0 | 1.02 | 125° |



| | mm | in |
|---------------|------|------|
| A min | 83.0 | 3.27 |
| B | 33.0 | 1.30 |
| PI min | 68.5 | 2.70 |

Increment: 25.4 mm (1.00 in).


Design Guidelines



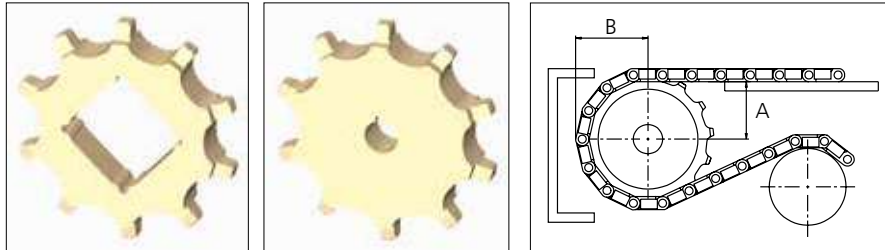
| uni Flex L-ASB R2.2 | |
|---------------------|--------------|
| A | min. 1.5 x W |
| B | min. 3.2 x W |
| C | min. 2.2 x W |
| D | min. 2.0 x W |
| E | min. 2.0 x W |
| F | min. 8.9 x W |
| G | min. 8.4 x W |

For min. conveyor dimensions please refer to sketch and diagram.

Sprocket

| No. of teeth | Bore size | | | | | | | | Overall diameter | | Pitch diameter | | Hub diameter | | Dimension A | | Dimension B | | Single row/Two way | Machined  |
|--------------|------------|------|------|------|------|------|------|------|------------------|------|----------------|------|--------------|------|-------------|------|-------------|------|--------------------|--|
| | Pilot Bore | in | 1.00 | 1.18 | 1.25 | 1.50 | 1.57 | 2.50 | | | | | | | | | | | | |
| | mm | 25.4 | 30.0 | 31.8 | 38.1 | 40.0 | 63.5 | mm | in | mm | in | mm | in | mm | in | mm | in | | | |
| Z08 | ✓ | | ● | ● | | | ● | | 134.6 | 5.30 | 131.5 | 5.18 | 107.6 | 4.23 | 54.4 | 2.14 | 74.9 | 2.95 | ✓ | ✓ |
| Z10 | ✓ | | ● | ● | ● | | ● | | 168.3 | 6.63 | 164.0 | 6.46 | 141.3 | 5.56 | 71.4 | 2.81 | 90.8 | 3.57 | ✓ | ✓ |
| Z12 | ✓ | | ● | | ● | ● | ● | ■ | 203.5 | 8.01 | 196.5 | 7.74 | 176.5 | 6.94 | 88.2 | 3.47 | 106.8 | 4.20 | ✓ | ✓ |
| Z15 | ✓ | | ● | | ● | ● | ● | ■ | 253.4 | 9.98 | 245.4 | 9.66 | 226.4 | 8.91 | 113.2 | 4.46 | 131.0 | 5.16 | ✓ | ✓ |

■ Machined sprocket ● Machined sprocket



Non standard material and color: See uni Material and Color Overview.

Other sprocket sizes are available upon request
 Two-part sprocket are available upon request
 Other bore sizes are available upon request
 uni Retainer Rings: See uni Retainer Ring data sheet
 Width of tooth = 15.0 mm (0.59 in)
 Width of sprocket = 30.0 mm (1.18 in)

Max. load per sprocket shown does not take bore size into account.
 Please also ensure that sufficient size shaft is chosen for corresponding load.

For correct sprocket position: See uni Assembly Instructions for uni Flex L-ASB.
 For more detailed sprocket information, contact Customer Service.