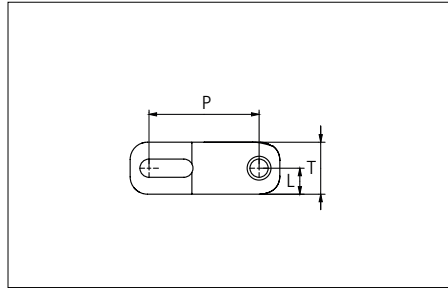
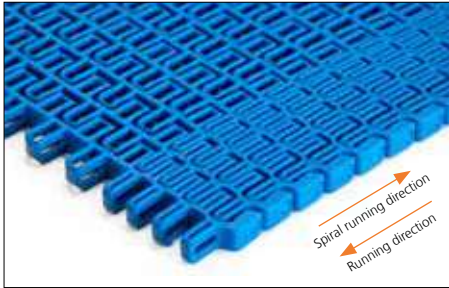


Plastic Modular Belt

Series **uni Flex OSB** Type **60% Open (Radius 2.2)**



Sideflexing belt
 Nominal pitch: 25.4 mm (1.00 in)
 Surface type: Open
 Surface opening: 60%
 Backflex radius: 30.0 mm (1.18 in)
 Pin diameter: 4.0 mm (0.16 in)
 Min. inside radius: R2.2 x belt width

Belt material & color	POM-D B	PP B		mm	in		mm	in	
	Pin and lock material & color		PA6.6 B	P (Nominal)	25.4	1.00	T	12.0	0.47
				L	6.0	0.24	-	-	-

Non standard material and color: See uni Material and Color Overview.

Alternative pin and lock systems and materials: Contact Customer Service.

Belt width		Permissible tensile force (Belt/pin material)								Belt weight (Belt/pin material)				*Min. No. drive sprocket per shaft	Number of wear strips (Min. No.)	
		POM-D/PA6.6				PP/PA6.6				POM-D/PA6.6		PP/PA6.6			Carry (pcs)	Return (pcs)
		Straight sections		Curve sections		Straight sections		Curve sections		kg/m	lb/ft	kg/m	lb/ft			
mm	in	N	lbf	N	lbf	N	lbf	N	lbf	kg/m	lb/ft	kg/m	lb/ft			
303	11.9	3333	749	2040	459	2485	559	1224	275	1.6	1.10	1.1	0.77	3	2	2
379	14.9	3979	894	2040	459	2979	670	1224	275	2.1	1.38	1.4	0.96	3	2	2
456	18.0	4634	1042	2040	459	3479	782	1224	275	2.5	1.66	1.7	1.16	5	2	2
533	21.0	5288	1189	2040	459	3980	895	1224	275	2.9	1.94	2.0	1.35	5	2	2
610	24.0	5943	1336	2040	459	4480	1007	1224	275	3.3	2.22	2.3	1.55	5	3	3
686	27.0	6589	1481	2040	459	4974	1118	1224	275	3.7	2.49	2.6	1.74	5	3	3
763	30.0	7243	1628	2040	459	5475	1231	1224	275	4.1	2.77	2.9	1.94	7	3	3
840	33.1	7898	1775	2040	459	5975	1343	1224	275	4.5	3.05	3.2	2.13	7	3	3
917	36.1	8552	1922	2040	459	6476	1456	1224	275	5.0	3.33	3.5	2.33	7	3	3
994	39.1	9207	2070	2040	459	6976	1568	1224	275	5.4	3.61	3.8	2.53	7	3	3
1070	42.1	9853	2215	2040	459	7470	1679	1224	275	5.8	3.89	4.0	2.72	9	4	4
1147	45.2	10507	2362	2040	459	7971	1792	1224	275	6.2	4.17	4.3	2.91	9	4	4

Additional standard belt widths are available in steps of 76.8 mm (3.02 in). Additional non-standard belt widths are available in steps of 25.6 mm (1.01 in).

1454	57.2	13117	2949	2040	459	9966	2240	1224	275	7.9	5.29	5.5	3.69	11	10	5
------	------	-------	------	------	-----	------	------	------	-----	-----	------	-----	------	----	----	---

General belt tolerance is +0/-0.4% at 23°C/73°F. For exact belt width contact Customer Service. Non standard belt width on request.

*Max. Load per Drive Sprocket. Belt material: POM-D 1000 N (223 lbf), PP 550 N (123 lbf).

Belt needs support rollers or flanged rollers at each belt edge for support.

= Single Link



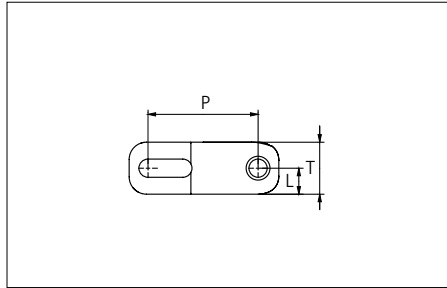
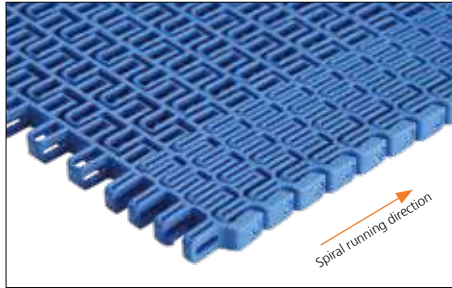
STANDARD

SIDE FLEXING

PITCH 25.4 MM/1.00 IN

Plastic Modular Belt

Series **uni Flex OSB** Type **60% Open (Radius 2.5/3.0/3.5/4.0)**



Sideflexing belt
 Nominal pitch: 25.4 mm (1.00 in)
 Surface type: Open
 Surface opening: 60%
 Backflex radius: 30.0 mm (1.18 in)
 Pin diameter: 4.0 mm (0.16 in)
 Min. inside radius:
 2.5 / 3.0 / 3.5 / 4.0 x belt width

Recommended Belt material & color	POM-D B		mm	in		mm	in
		P (Nominal)	25.4	1.00	T	12.0	0.47
Recommended Pin material & color	PA6.6 B	L	6.0	0.24	-	-	-

Other non standard material and color: See uni Material and Color Overview.

Alternative pin and lock systems and materials: Contact Customer Service.

Belt width		Permissible tensile force (Belt/pin material)								Belt weight (Belt/pin material)				*Min. No. drive sprocket per shaft	Number of wear strips (Min. No.)	
		POM-D/PA6.6				PP/PA6.6				POM-D/PA6.6		PP/PA6.6			Carry (pcs)	Return (pcs)
		Straight sections		Curve sections		Straight sections		Curve sections		kg/m	lb/ft	kg/m	lb/ft			
mm	in	N	lbf	N	lbf	N	lbf	N	lbf	kg/m	lb/ft	kg/m	lb/ft			
303	11.9	3333	749	2040	459	2485	559	1224	275	1.6	1.10	1.1	0.77	3	2	2
379	14.9	3979	894	2040	459	2979	670	1224	275	2.1	1.38	1.4	0.96	3	2	2
456	18.0	4634	1042	2040	459	3479	782	1224	275	2.5	1.66	1.7	1.16	5	2	2
533	21.0	5288	1189	2040	459	3980	895	1224	275	2.9	1.94	2.0	1.35	5	2	2
610	24.0	5943	1336	2040	459	4480	1007	1224	275	3.3	2.22	2.3	1.55	5	3	3
686	27.0	6589	1481	2040	459	4974	1118	1224	275	3.7	2.49	2.6	1.74	5	3	3
763	30.0	7243	1628	2040	459	5475	1231	1224	275	4.1	2.77	2.9	1.94	7	3	3
840	33.1	7898	1775	2040	459	5975	1343	1224	275	4.5	3.05	3.2	2.13	7	3	3
917	36.1	8552	1922	2040	459	6476	1456	1224	275	5.0	3.33	3.5	2.33	7	3	3
994	39.1	9207	2070	2040	459	6976	1568	1224	275	5.4	3.61	3.8	2.53	7	3	3
1070	42.1	9853	2215	2040	459	7470	1679	1224	275	5.8	3.89	4.0	2.72	9	4	4
1147	45.2	10507	2362	2040	459	7971	1792	1224	275	6.2	4.17	4.3	2.91	9	4	4

Additional standard belt widths are available in steps of 76.8 mm (3.02 in). Additional non-standard belt widths are available in steps of 25.6 mm (1.01 in).

1454	57.2	13117	2949	2040	459	9966	2240	1224	275	7.9	5.29	5.5	3.69	11	10	5
------	------	-------	------	------	-----	------	------	------	-----	-----	------	-----	------	----	----	---

General belt tolerance is +0/-0.4% at 23°C/73°F. For exact belt width contact Customer Service. Non standard belt width on request.

*Max. Load per Drive Sprocket. Belt material: POM-D 1000 N (223 lbf), PP 550 N (123 lbf).

Belt needs support rollers or flanged rollers at each belt edge for support.

= Single Link



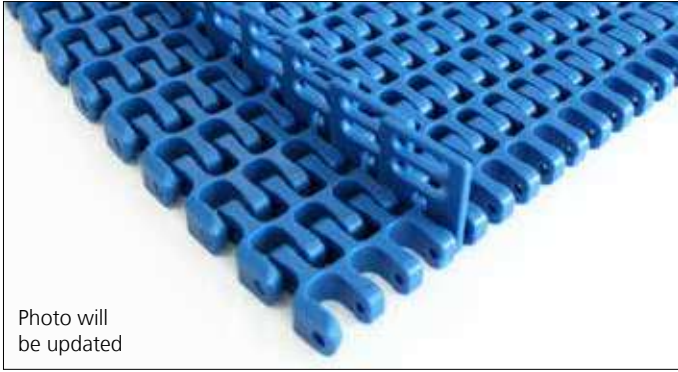
NON STANDARD

SIDE FLEXING

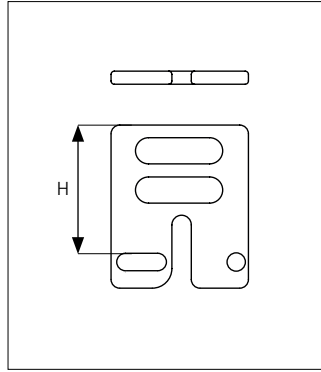
PITCH 25.4 MM/1.00 IN

Accessories

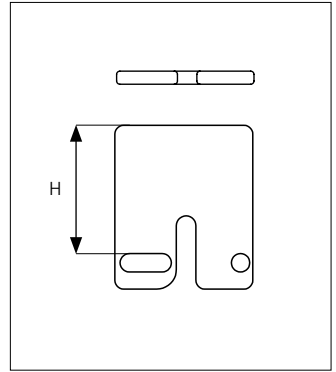
Side Guard



Side Guard Open



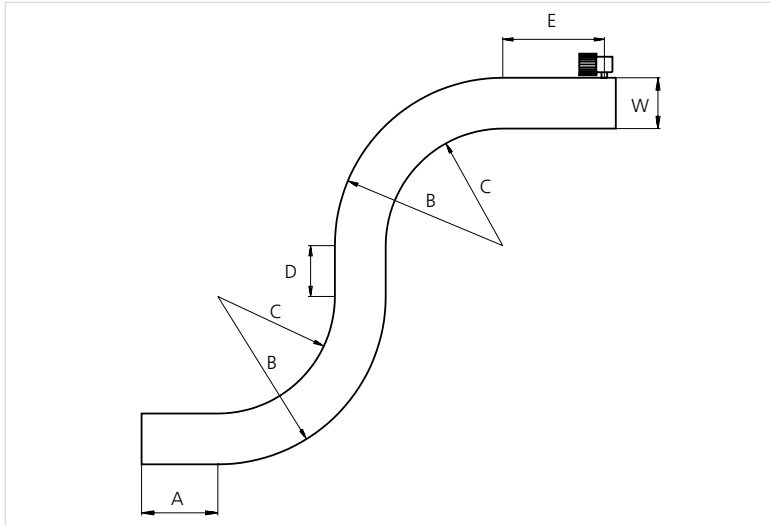
Side Guard Closed



Type	Side Guard Material & color	H	
		mm	in
Side Guard	POM-D B	25.4	1.00
Side Guard Open			

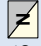
Min. indent for Side Guard: 44.0 mm (1.73 in) and Increment 12.7 mm (0.50 in).
 Non Standard material and color: See uni Material and Color Overview.

Design Guidelines



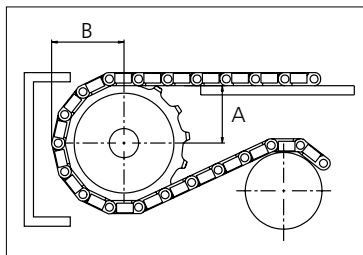
	65% Open Radius 2.2
A	min. 1.5 x W
B	min 3.2 x W
C	min 2.2 x W
D	min 2 x W
E	min 2 x W, min.
W	Belt width

Sprocket

No. of teeth	Bore size									Overall diameter		Pitch diameter		Hub diameter		Dimension A		Dimension B		Single row/Two way	Machined 
	Pilot Bore	in	0.98	1.00	1.18	1.25	1.50	1.57	2.36												
	mm	25.0	25.4	30.0	31.8	38.1	40.0	60.0	mm	in	mm	in	mm	in	mm	in					
Z09	✓		●	●	●	●				75.0	2.95	74.3	2.93	57.8	2.28	28.9	1.14	43.1	1.70	✓	✓
Z12	✓		●	●	●	●	■			100.0	3.94	98.1	3.86	82.8	3.26	41.4	1.63	55.1	2.17	✓	✓
Z15	✓			●	●	●	■	●	■	124.6	4.91	122.2	4.81	107.4	4.23	53.8	2.12	67.1	2.64	✓	✓
Z18	✓				●	●	●	●	■	149.3	5.88	146.3	5.76	132.1	5.20	66.0	2.60	79.2	3.12	✓	✓

■ Machined sprocket

● Machined sprocket



Non standard material and color: See uni Material and Color Overview.

Other sprocket sizes are available upon request

Two-part sprocket are available upon request

Other bore sizes are available upon request

uni Retainer Rings: See uni Retainer Ring data sheet

Width of tooth = 14.0 mm (0.55 in)

Width of sprocket = 30.0 mm (1.18 in)

Max. load per sprocket shown does not take bore size into account.

Please also ensure that sufficient size shaft is chosen for corresponding load.

For correct sprocket position: See uni Assembly Instructions for uni Flex OSB.

For more detailed sprocket information, contact Customer Service.