

Paso de 50.8 mm (2.00 pulgadas)



uni RTB – La Excelencia en bandas plásticas con rodamientos orientables

Nuestra uni RTB 2011, es la opción más flexible y adaptable para sus necesidades de transporte. Acumulación, aceleración y desvíos son algunas de las posibilidades que ofrece nuestra ingeniosa banda plástica.

Diversos grados de posicionamiento, así como diámetro, convierten a nuestra gama RTB en la banda más polivalente para transporte lineal.

Un nuevo concepto de unión sin varilla plástica Snap Link® permite una fácil instalación así como un rendimiento óptimo. Ello simplifica

las tareas de limpieza y reposición de elementos desgastados o dañados.

La configuración modular de nuestra RTB permite adaptarse a longitudes y anchuras bajo demanda.

Características básicas y posibilidades de uso:

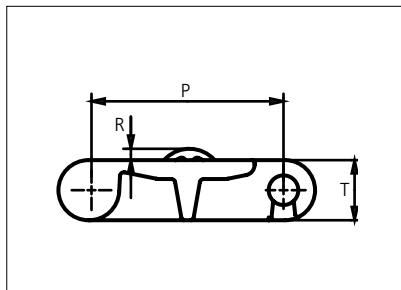
- El bajo coeficiente de fricción que ejercen los rodamientos en contacto con cualquier producto, permiten la acumulación del mismo sin generar atascos y desplazamientos no deseados del mismo.
- Es especialmente adecuado en aplicaciones donde el producto a transportar tiene un elevado

coeficiente de fricción y o adherencia. Ej.: Neumáticos.

- El giro en vacío que efectúan los rodamientos evitan el riesgo de dañar el producto a manipular. A la vez que minimizan los costes energéticos necesarios para su funcionamiento.
- Las diversas posibles posiciones a 0°, 30°, 60°, 90°, 120° y 150° permiten desvíos a laterales ejerciendo una presión reducida sobre el producto.
- Alturas de los rodamientos de 3 y 6 mm sobre la superficie de la banda , crean el espacio necesario para enfriar y absorber superficies irregulares.

Plastic Modular Belt

Series **uni RTB** Type **M1**



Straight running belt
 Nominal pitch: 50.8 mm (2.00 in)
 Surface type: Roller Top
 Surface opening: Closed
 Backflex radius: 65.0 mm (2.56 in)
 uni Snap link (pinless)

Belt material & color	POM-S B	P (Nominal)	mm	in	T	mm	in
Roller material & color	POM-NL G	R	50.8	2.00	-	16.0	0.63
Cover plate material & color	POM-NL B	Roller Positions					
Pin for roller material & color	SS304						

Non standard material and color: See uni Material and Color Overview.

Belt width		Permissible tensile force (Belt/pin material)		Belt weight (Belt/pin material)		*Min. No. drive sprocket per shaft	Number of wear strips (Min. No.)	
		POM-S		POM-S			**Carry (pcs)	**Return (pcs)
mm	in	N	lbf	kg/m	lb/ft			
153	6.0	4208	946	2.2	1.49	2	2	2
204	8.0	5611	1261	3.0	1.99	2	2	2
255	10.0	7014	1577	3.7	2.49	2	2	2
306	12.1	8417	1892	4.4	2.98	3	3	2
357	14.1	9821	2208	5.2	3.48	3	3	2
408	16.1	11224	2523	5.9	3.98	3	3	2
459	18.1	12627	2839	6.7	4.47	4	4	2
510	20.1	14031	3154	7.4	4.97	4	4	2
561	22.1	15434	3470	8.1	5.47	4	4	2
612	24.1	16837	3785	8.9	5.97	5	5	3
663	26.1	18240	4100	9.6	6.46	5	5	3

Additional standard belt widths are available in steps of 51.0 mm (2.01 in).

1989	78.3	54698	12296	28.8	19.38	14	14	7
------	------	-------	-------	------	-------	----	----	---

Additional standard belt widths are available in steps of 51.0 mm (2.01 in).

2958	116.5	81345	18286	42.9	28.82	20	20	10
------	-------	-------	-------	------	-------	----	----	----

General belt tolerance is +0/-0.4% at 23°C/73°F and 50% RH. For exact belt width contact Customer Service. Non standard belt width on request.

*Max. Load per Drive Sprocket. Belt material: POM-S 2000 N (450 lbf).

**Max. Spacing between wear strips, Carry: 152.0 mm (6.00 in); Return: 304.0 mm (12.00 in).

= Single Link



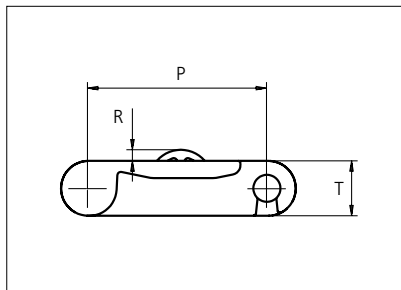
STANDARD

STRAIGHT RUNNING

PITCH 50.8 MM/2.00 IN

Plastic Modular Belt

Series **uni RTB** Type **M1 8% Open**



Straight running belt
 Nominal pitch: 50.8 mm (2.00 in)
 Surface type: Roller Top
 Surface opening: 8%
 Backflex radius: 65.0 mm (2.56 in)
 uni Snap link (pinless)

Belt material & color	PA6.6 DG	P (Nominal)	mm	in	T	mm	in
Roller material & color	PA6.6 DG	R	50.8	2.00	-	16.0	0.63
Pin for roller material & color	SS304	Roller Positions					

Non standard material and color: See uni Material and Color Overview.

Belt width		Permissible tensile force (Belt/pin material)		Belt weight (Belt/pin material)		*Min. No. drive sprocket per shaft	Number of wear strips (Min. No.)	
		PA6.6		PA6.6			**Carry (pcs)	**Return (pcs)
mm	in	N	lbf	kg/m	lb/ft			
154	6.1	4235	952	2.2	1.50	2	2	2
205	8.1	5638	1267	3.0	2.00	2	2	2
256	10.1	7040	1583	3.7	2.49	2	2	2
307	12.1	8443	1898	4.5	2.99	3	3	2
358	14.1	9845	2213	5.2	3.49	3	3	2
409	16.1	11248	2528	5.9	3.99	3	3	2
460	18.1	12650	2844	6.7	4.48	4	4	2
511	20.1	14053	3159	7.4	4.98	4	4	2
563	22.2	15483	3480	8.2	5.49	4	4	2
614	24.2	16885	3796	8.9	5.98	5	5	3
665	26.2	18288	4111	9.6	6.48	5	5	3

Additional standard belt widths are available in steps of 51.0 mm (2.01 in).

1993	78.5	54808	12321	28.9	19.42	14	14	7
------	------	-------	-------	------	-------	----	----	---

Additional standard belt widths are available in steps of 51.0 mm (2.01 in).

2964	116.7	81510	18323	43.0	28.88	20	20	10
------	-------	-------	-------	------	-------	----	----	----

General belt tolerance is +0/-0.4% at 23°C/73°F and 50% RH. For exact belt width contact Customer Service. Non standard belt width on request.

*Max. Load per Drive Sprocket. Belt material: PA6.6 2000 N (450 lbf).

**Max. Spacing between wear strips, Carry: 152.0 mm (6.00 in); Return: 304.0 mm (12.00 in).

= Single Link



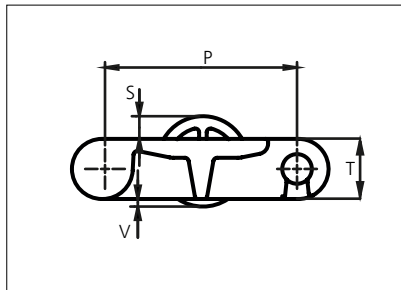
STANDARD

STRAIGHT RUNNING

PITCH 50.8 MM/2.00 IN

Plastic Modular Belt

Series **uni RTB** Type **M2**



Straight running belt
 Nominal pitch: 50.8 mm (2.00 in)
 Surface type: Roller Top
 Surface opening: Closed
 Backflex radius: 65.0 mm (2.56 in)
 uni Snap link (pinless)

Belt material & color	POM-S B	P (Nominal)	mm	in	T	mm	in
Roller material & color	POM-NL O	S	50.8	2.00	V	16.0	0.63
Cover plate material & color	POM-NL O		6.0	0.24		2.0	0.08
Pin for roller material & color	SS304	Roller Positions					

Non standard material and color: See uni Material and Color Overview.

Belt width		Permissible tensile force (Belt/pin material)		Belt weight (Belt/pin material)		*Min. No. drive sprocket per shaft	Number of wear strips (Min. No.)	
		POM-S		POM-S			**Carry (pcs)	**Return (pcs)
mm	in	N	lbf	kg/m	lb/ft			
153	6.0	4208	946	2.2	1.49	2	2	2
204	8.0	5611	1261	3.0	1.99	2	2	2
255	10.0	7014	1577	3.7	2.49	2	2	2
306	12.1	8417	1892	4.4	2.98	3	3	2
357	14.1	9821	2208	5.2	3.48	3	3	2
408	16.1	11224	2523	5.9	3.98	3	3	2
459	18.1	12627	2839	6.7	4.47	4	4	2
510	20.1	14031	3154	7.4	4.97	4	4	2
561	22.1	15434	3470	8.1	5.47	4	4	2
612	24.1	16837	3785	8.9	5.97	5	5	3
663	26.1	18240	4100	9.6	6.46	5	5	3

Additional standard belt widths are available in steps of 51.0 mm (2.01 in).

1989	78.3	54698	12296	28.8	19.38	14	14	7
------	------	-------	-------	------	-------	----	----	---

Additional standard belt widths are available in steps of 51.0 mm (2.01 in).

2958	116.5	81345	18286	42.9	28.82	20	20	10
------	-------	-------	-------	------	-------	----	----	----

General belt tolerance is +0/-0.4% at 23°C/73°F and 50% RH. For exact belt width contact Customer Service. Non standard belt width on request.

*Max. Load per Drive Sprocket. Belt material: POM-S 2000 N (450 lbf).

**Max. Spacing between wear strips, Carry: 152.0 mm (6.00 in); Return: 304.0 mm (12.00 in).

= Single Link



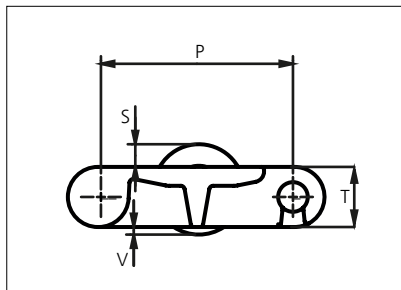
STANDARD

STRAIGHT RUNNING

PITCH 50.8 MM/2.00 IN

Plastic Modular Belt

Series **uni RTB** Type **M2 Rubber Top**



Straight running belt
 Nominal pitch: 50.8 mm (2.00 in)
 Surface type: Roller Top
 Surface opening: Closed
 Backflex radius: 65.0 mm (2.56 in)
 uni Snap link (pinless)

Belt material & color	POM-S B	P (Nominal)	mm 50.8	in 2.00	T	mm 16.0	in 0.63
Roller and Rubber material & color	POM-NL O 01 K	S	mm 6.0	in 0.24	V	mm 2.0	in 0.08
Cover plate material & color	POM-NL O	Roller Positions					
Pin for roller material & color	SS304						

Non standard material and color: See uni Material and Color Overview.

Belt width		Permissible tensile force (Belt/pin material)		Belt weight (Belt/pin material)		*Min. No. drive sprocket per shaft	Number of wear strips (Min. No.)	
		POM-S		POM-S			**Carry (pcs)	**Return (pcs)
mm	in	N	lbf	kg/m	lb/ft			
153	6.0	4208	946	2.2	1.49	2	2	2
204	8.0	5611	1261	3.0	1.99	2	2	2
255	10.0	7014	1577	3.7	2.49	2	2	2
306	12.1	8417	1892	4.4	2.98	3	3	2
357	14.1	9821	2208	5.2	3.48	3	3	2
408	16.1	11224	2523	5.9	3.98	3	3	2
459	18.1	12627	2839	6.7	4.47	4	4	2
510	20.1	14031	3154	7.4	4.97	4	4	2
561	22.1	15434	3470	8.1	5.47	4	4	2
612	24.1	16837	3785	8.9	5.97	5	5	3
663	26.1	18240	4100	9.6	6.46	5	5	3

Additional standard belt widths are available in steps of 51.0 mm (2.01 in).

1989	78.3	54698	12296	28.8	19.38	14	14	7
------	------	-------	-------	------	-------	----	----	---

Additional standard belt widths are available in steps of 51.0 mm (2.01 in).

2958	116.5	81345	18286	42.9	28.82	20	20	10
------	-------	-------	-------	------	-------	----	----	----

General belt tolerance is +0/-0.4% at 23°C/73°F and 50% RH. For exact belt width contact Customer Service. Non standard belt width on request.

*Max. Load per Drive Sprocket. Belt material: POM-S 2000 N (450 lbf).

**Max. Spacing between wear strips, Carry: 152.0 mm (6.00 in); Return: 304.0 mm (12.00 in).

= Single Link



STANDARD

STRAIGHT RUNNING

PITCH 50.8 MM/2.00 IN

Sprocket

No. of teeth	Bore size									Overall diameter		Pitch-diameter		Hub-diameter		Dimension A		Dimension B		Single row/One way	Molded	Machined
	Pilot bore																					
	mm	in	1.00	1.18	1.25	1.50	1.57	2.36	2.50	mm	in	mm	in	mm	in	mm	in					
Z08	✓		●	●	●	■	●			132.9	5.23	132.8	5.23	65.0	2.56	53.3	2.10	74.6	2.93	✓	✓	
Z10	✓			●	●	■	●			166.3	6.55	164.4	6.47	65.0	2.56	70.2	2.76	90.4	3.56	✓	✓	
Z10								■	■	166.3	6.55	164.4	6.47	120.0	4.72	70.2	2.76	90.4	3.56	✓	✓	
Z12	✓			●	●	■	●			198.6	7.82	196.3	7.73	65.0	2.56	86.8	3.42	106.3	4.18	✓	✓	
Z12								■	■	198.6	7.82	196.3	7.73	120.0	4.72	86.8	3.42	106.3	4.18	✓	✓	
Z16	✓			●	●	■	●	■	■	263.8	10.39	260.4	10.25	150.0	5.90	119.7	4.71	138.3	5.44	✓		✓

● Molded sprocket

■ Machined sprocket



Other sprocket sizes are available upon request.

Other bore sizes on sprockets are available upon request.

Round bores are always delivered with keyway.

Max. load per sprocket shown does not take bore size into account.

Please also ensure that sufficient size shaft is chosen for corresponding load.

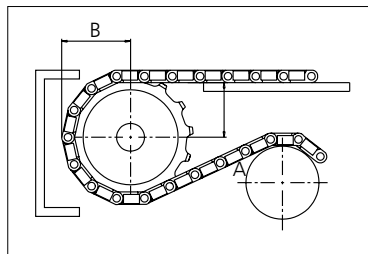
Width of tooth = Single row 9.5 mm (0.37 in)

Width of One-part sprocket = Single row: 42.3 mm (1.67 in)

uni UltraClean Two-Part Sprocket

No. of teeth	Bore size				Overall diameter		Pitch-diameter		Hub-diameter		Dimension A		Dimension B		Single row/One way	Moulded
	in	1.50	1.57	2.36												
	mm	38.1	40.0	60.0	mm	in	mm	in	mm	in	mm	in	mm	in		
Z8		■	■		132.9	5.23	132.8	5.23	80.0	3.15	53.3	2.10	74.9	2.94	✓	✓
Z10		1 ■	1 ■	2 ■	166.3	6.55	164.4	6.47	¹ 126.0 ² 118.0	¹ 4.96 ² 4.65	70.2	2.76	90.7	3.57	✓	✓
Z12		1 ■	1 ■	2 ■	198.6	7.82	196.3	7.73	¹ 126.0 ² 118.0	¹ 4.96 ² 4.65	86.8	3.42	106.6	4.19	✓	✓

■ Moulded uni UltraClean TwoPart Sprocket



Width of UltraClean Two-part sprocket = Single row: 44.0 mm (1.73 in)

Width of UltraClean Two-part sprocket, tooth = Single row: 9.5 mm (0.37 in)

uni Retainer Rings: See uni Retainer Ring data sheet.

For correct sprocket position: See uni Assembly Instructions for uni RTB.

For more detailed sprocket information, contact Customer Service.