

**Paso de 50.8 mm (2.00 pulgadas)**



**uni BLB – la banda perfecta para cocinar, cocer al vapor y escaldar**

El diseño de la uni BLB combina el plástico con el acero inoxidable. Una superficie única de la banda garantiza que los productos transportados entran únicamente en contacto con el plástico sin que se pierdan las ventajas del acero inoxidable. La combinación de plástico y acero inoxidable evita de este modo el alargamiento y la reducción de esfuerzo a las temperaturas de ebullición del agua. Esto hace que uni BLB resulte ideal para manipular todo tipo de productos sensibles tales como verduras, frutas y pasta. Con las aperturas especiales en la superficie, incluso se puede manipular arroz con la uni BLB.

**La banda BLB mejora el rendimiento en las siguientes industrias/aplicaciones:**

- Escaldado de verduras y arroz
- Cocinado o precocinado de pasta fresca
- Cocer arroz al vapor
- Cocinar y enfriar pescado y marisco

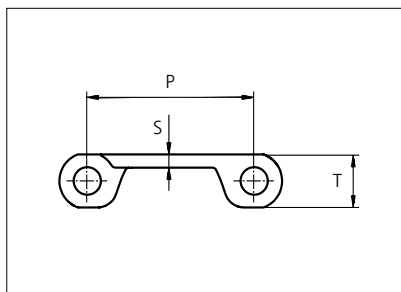
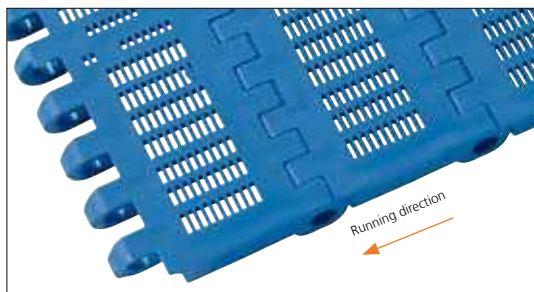
**Características del producto y ventajas de funcionamiento:**

- Una mejor calidad del producto, ya que la superficie de la banda garantiza unos daños mínimos en los productos y una separación fácil de la banda
- Sin marcas de la superficie de la banda en los productos

- No se produce contaminación o daños en los productos debido al contacto con el acero inoxidable
- Una alta duración y unos costes de mantenimiento bajos
- Un diseño simplificado y fiable ya que se reduce el alargamiento de la banda debido a la temperatura en un 90% en comparación con las bandas de plástico
- Un rendimiento superior del producto debido a un diseño higiénico y un tiempo inferior de limpieza
- Una mayor utilización del equipo ya que se pueden manipular diversos productos en la misma banda. Esto hace que el equipo dependa en menor grado de las temporadas cortas de cosecha

# Plastic Modular Belt

Series **uni BLB** Type **18%**



Straight running belt  
 Nominal pitch: 50.8 mm (2.00 in)  
 Surface type: Flat  
 Surface opening: 18%  
 Backflex radius: 65.0 mm (2.60 in)  
 Pin diameter: 8.0 mm (0.31 in)

Belt material & color	PP-HW <b>LB</b>		mm	in		mm	in
	Pin and lock material & color	<b>SS304</b> PP-HW <b>LB</b>	<b>P (Nominal)</b>	50.8	2.00	<b>T</b>	16.0
<b>S</b>			4.0	0.16	-	-	-

Non standard material and color: See uni Material and Color Overview.

Alternative pin and lock materials: Lockpin: PP-HW **LB**

Belt width		***Permissible tensile force (Belt/pin material)				Belt weight (Belt/pin material)				*Min. No. drive sprocket per shaft	Number of wear strips (Min. No.)	
		PP-HW/SS		PP-HW/ PP-HW		PP-HW/SS		PP-HW/PP-HW			**Carry (pcs)	**Return (pcs)
mm	in	N	lbf	N	lbf	kg/m	lb/ft	kg/m	lb/ft			
153	6.0	1010	227	1010	227	1.8	1.20	0.7	0.49	2	2	2
306	12.0	2020	454	2020	454	3.6	2.41	1.5	0.99	3	3	2
357	14.0	2354	529	2354	529	4.2	2.80	1.7	1.15	3	3	2
408	16.1	2693	605	2693	605	4.8	3.21	2.0	1.32	3	3	2
459	18.1	3028	681	3028	681	5.4	3.61	2.2	1.48	4	4	2
509	20.1	3362	756	3362	756	6.0	4.01	2.4	1.64	4	4	2
560	22.1	3697	831	3697	831	6.6	4.40	2.7	1.81	4	4	2
611	24.1	4032	906	4032	906	7.1	4.80	2.9	1.97	5	5	3
662	26.0	4367	982	4367	982	7.7	5.20	3.2	2.13	5	5	3
713	28.1	4706	1058	4706	1058	8.3	5.61	3.4	2.30	5	5	3
764	30.1	5041	1133	5041	1133	8.9	6.01	3.7	2.46	6	6	3
815	32.1	5379	1209	5379	1209	9.5	6.41	3.9	2.63	6	6	3

Additional standard belt widths are available in steps of 50.7 mm (2.00 in).

1985	78.1	13101	2945	13101	2945	23.2	15.61	9.5	6.40	14	14	7
------	------	-------	------	-------	------	------	-------	-----	------	----	----	---

Additional standard belt widths are available in steps of 50.7 mm (2.00 in).

3003	118.2	19820	4455	19820	4455	35.1	23.61	14.4	9.69	21	21	11
------	-------	-------	------	-------	------	------	-------	------	------	----	----	----

General belt tolerance is +0/-0.4% at 23°C/73°F and 50% RH. For exact belt width contact Customer Service. Non standard belt width on request.

\*Max. Load per Drive Sprocket. Belt material: PP-HW with snub roller 2000 N (450 lbf), PP-HW without snub roller 1250 N (281 lbf).

\*\*Max. Spacing between wear strips, Carry: 152.0 mm (6.00 in); Return: 304.0 mm (12.00 in).

\*\*\*Load capacity per row of reinforcement links in the belt: 2500 N (562 lbf).

\*\*\*Example: Belt with 8 rows of reinforcement links, permissible load is 8 x 2500 N (562 lbf) = 20000 N (4496 lbf).

= Single Link



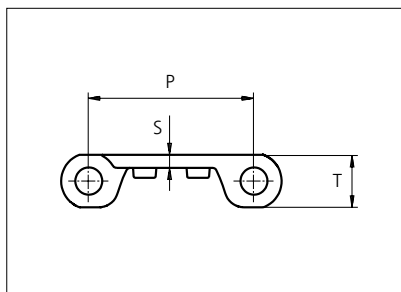
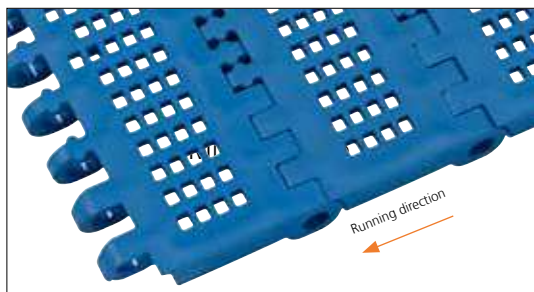
STANDARD

STRAIGHT RUNNING

PITCH 50.8 MM/2.00 IN

# Plastic Modular Belt

Series **uni BLB** Type **22%**



Straight running belt  
 Nominal pitch: 50.8 mm (2.00 in)  
 Surface type: Flat  
 Surface opening: 22%  
 Backflex radius: 65.0 mm (2.60 in)  
 Pin diameter: 8.0 mm (0.31 in)

Belt material & color	PP-HW <b>LB</b>		mm	in		mm	in
	Pin and lock material & color	<b>SS304</b> PP-HW <b>LB</b>	<b>P (Nominal)</b>	50.8	2.00	<b>T</b>	16.0
<b>S</b>			4.0	0.16	-	-	-

Non standard material and color: See uni Material and Color Overview.

Alternative pin and lock materials: Lockpin: PP-HW **LB**

Belt width		***Permissible tensile force (Belt/pin material)				Belt weight (Belt/pin material)				*Min. No. drive sprocket per shaft	Number of wear strips (Min. No.)	
		PP-HW/SS		PP-HW/ PP-HW		PP-HW/SS		PP-HW/PP-HW			**Carry (pcs)	**Return (pcs)
mm	in	N	lbf	N	lbf	kg/m	lb/ft	kg/m	lb/ft			
152	6.0	1005	226	1005	226	1.8	1.20	0.7	0.49	2	2	2
305	12.0	2013	453	2013	453	3.6	2.40	1.5	0.98	3	3	2
356	14.0	2348	528	2348	528	4.2	2.80	1.7	1.15	3	3	2
406	16.0	2683	603	2683	603	4.8	3.20	2.0	1.31	3	3	2
457	18.0	3017	678	3017	678	5.3	3.59	2.2	1.47	4	4	2
508	20.0	3352	754	3352	754	5.9	3.99	2.4	1.64	4	4	2
559	22.0	3687	829	3687	829	6.5	4.39	2.7	1.80	4	4	2
609	24.0	4022	904	4022	904	7.1	4.79	2.9	1.97	5	5	3
660	26.0	4356	979	4356	979	7.7	5.19	3.2	2.13	5	5	3
711	28.0	4691	1055	4691	1055	8.3	5.59	3.4	2.29	5	5	3
762	30.0	5026	1130	5026	1130	8.9	5.99	3.7	2.46	6	6	3
812	32.0	5361	1205	5361	1205	9.5	6.39	3.9	2.62	6	6	3

Additional standard belt widths are available in steps of 50.7 mm (2.00 in).

1979	77.9	13061	2936	13061	2936	23.2	15.56	9.5	6.38	14	14	7
------	------	-------	------	-------	------	------	-------	-----	------	----	----	---

Additional standard belt widths are available in steps of 50.7 mm (2.00 in).

2994	117.9	19760	4442	19760	4442	35.0	23.54	14.4	9.66	20	20	10
------	-------	-------	------	-------	------	------	-------	------	------	----	----	----

General belt tolerance is +0/-0.4% at 23°C/73°F and 50% RH . For exact belt width contact Customer Service. Non standard belt width on request.

\*Max. Load per Drive Sprocket. Belt material: PP-HW with snub roller 2000 N (450 lbf), PP-HW without snub roller 1250 N (281 lbf)

\*\*Max. Spacing between wear strips, Carry: 152.0 mm (6.00 in); Return: 304.0 mm (12.00 in).

\*\*\*Load capacity per row of reinforcement links in the belt: 2500 N (562 lbf)

\*\*\*Example: Belt with 8 rows of reinforcement links, permissible load is 8 x 2500 N (562 lbf) = 20000 N (4496 lbf)

= Single Link



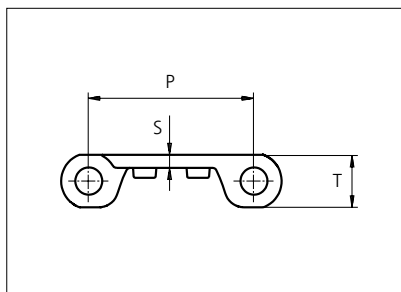
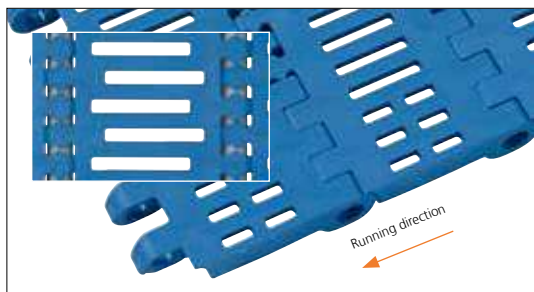
STANDARD

STRAIGHT RUNNING

PITCH 50.8 MM/2.00 IN

# Plastic Modular Belt

Series **uni BLB** Type **38%**



Straight running belt  
 Nominal pitch: 50.8 mm (2.00 in)  
 Surface type: Flat  
 Surface opening: 38%  
 Backflex radius: 65.0 mm (2.60 in)  
 Pin diameter: 8.0 mm (0.31 in)

Belt material & color	PP-HW <b>LB</b>		mm	in		mm	in
	Pin and lock material & color	<b>SS304</b> PP-HW <b>LB</b>	<b>P (Nominal)</b>	50.8	2.00	<b>T</b>	16.0
<b>S</b>			4.0	0.16	-	-	-

Non standard material and color: See uni Material and Color Overview.

Alternative pin and lock materials: Lockpin: PP-HW **LB**

Belt width		***Permissible tensile force (Belt/pin material)				Belt weight (Belt/pin material)				*Min. No. drive sprocket per shaft	Number of wear strips (Min. No.)	
		PP-HW/SS		PP-HW/ PP-HW		PP-HW/SS		PP-HW/PP-HW			**Carry (pcs)	**Return (pcs)
mm	in	N	lbf	N	lbf	kg/m	lb/ft	kg/m	lb/ft			
152	6.0	1005	226	1005	226	1.8	1.20	0.7	0.49	2	2	2
305	12.0	2013	453	2013	453	3.6	2.40	1.5	0.98	3	3	2
356	14.0	2348	528	2348	528	4.2	2.80	1.7	1.15	3	3	2
406	16.0	2683	603	2683	603	4.8	3.20	2.0	1.31	3	3	2
457	18.0	3017	678	3017	678	5.3	3.59	2.2	1.47	4	4	2
508	20.0	3352	754	3352	754	5.9	3.99	2.4	1.64	4	4	2
559	22.0	3687	829	3687	829	6.5	4.39	2.7	1.80	4	4	2
609	24.0	4022	904	4022	904	7.1	4.79	2.9	1.97	5	5	3
660	26.0	4356	979	4356	979	7.7	5.19	3.2	2.13	5	5	3
711	28.0	4691	1055	4691	1055	8.3	5.59	3.4	2.29	5	5	3
762	30.0	5026	1130	5026	1130	8.9	5.99	3.7	2.46	6	6	3
812	32.0	5361	1205	5361	1205	9.5	6.39	3.9	2.62	6	6	3

Additional standard belt widths are available in steps of 50.7 mm (2.00 in).

1979	77.9	13061	2936	13061	2936	23.2	15.56	9.5	6.38	14	14	7
------	------	-------	------	-------	------	------	-------	-----	------	----	----	---

Additional standard belt widths are available in steps of 50.7 mm (2.00 in).

2994	117.9	19760	4442	19760	4442	35.0	23.54	14.4	9.66	20	20	10
------	-------	-------	------	-------	------	------	-------	------	------	----	----	----

General belt tolerance is +0/-0.4% at 23°C/73°F and 50% RH. For exact belt width contact Customer Service. Non standard belt width on request.

\*Max. Load per Drive Sprocket. Belt material: PP-HW with snub roller 2000 N (450 lbf), PP-HW without snub roller 1250 N (281 lbf)

\*\*Max. Spacing between wear strips, Carry: 152.0 mm (6.00 in); Return: 304.0 mm (12.00 in).

\*\*\*Load capacity per row of reinforcement links in the belt: 2500 N (562 lbf) Example: Belt with 8 rows of reinforcement links,

\*\*\*Example: Belt with 8 rows of reinforcement links, permissible load is 8 x 2500 N (562 lbf) = 20000 N (4496 lbf)

= Single Link



STANDARD

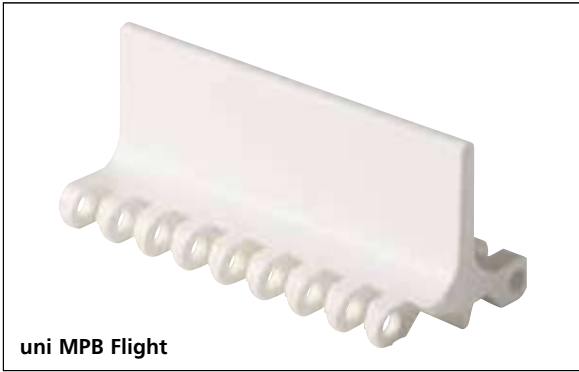
STRAIGHT RUNNING

PITCH 50.8 MM/2.00 IN



## Accessories

### Flight / Non Standard

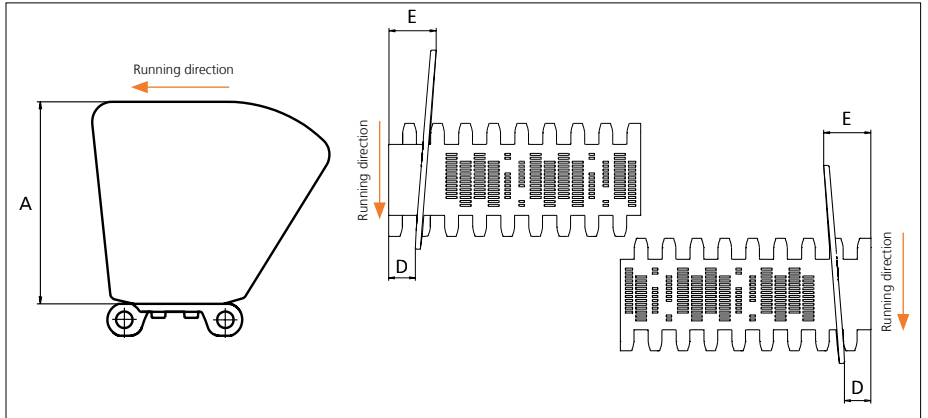


uni MPB Flight

uni MPB Flights in PP-HW **LB** fits the BLB belt and are available on request. Please see the uni MPB Flight datasheet for more information.

## Accessories

### Side Guard



Type	Material & color	A		E		D	
		mm	in	mm	in	mm	in
Closed	PP-HW <b>LB</b>	101.6	4.00	28.5	1.12	16.0	0.63

Non Standard material and color: See uni Material and Color Overview.  
Backflex radius for Side Guard: 200.0 mm (7.90 in)

## Accessories

### Reinforcement Link



Load capacity per row of reinforcement links in the belt. Maximum 19 rows per metre belt width.  
Example: If seven rows are installed the max. permissible load of the belt is  
 $7 \times 2500 \text{ N (562 lbf)} = 17500 \text{ N (3934 lbf)}$ .

Type	Material & color	N/row	Lbf/row
Steel Link	<b>SS316</b>	2500	562

Non Standard material and color: See uni Material and Color Overview.

## Sprocket

No of teeth	Bore size									Overall diameter		Pitch-diameter		Hub-diameter		Dimension A		Dimension B		Single row/One way	Molded PA6 LG	Machined PA6 N
	Pilot bore	in			mm			60.0	63.5													
		mm	25.4	30.0	31.8	38.1	40.0															
Z08	✓	●	●	●	■	■				132.9	5.23	132.8	5.23	65.0	2.56	53.3	2.10	74.9	2.94	✓	✓	
Z10	✓		●	●	■	■				166.3	6.55	164.4	6.47	65.0	2.56	70.2	2.76	90.7	3.57	✓	✓	
Z10							■	■		166.3	6.55	164.4	6.47	120.0	4.72	70.2	2.76	90.7	3.57	✓	✓	
Z12	✓		●	●	■	■				198.6	7.82	196.3	7.73	65.0	2.56	86.8	3.42	106.6	4.19	✓	✓	
Z12							■	■		198.6	7.82	196.3	7.73	120.0	4.72	86.8	3.42	106.6	4.19	✓	✓	
Z16	✓		●	●	■	■	■	■		263.8	10.39	260.4	10.25	150.0	5.90	119.7	4.71	138.7	5.46	✓		✓

● Molded sprocket

■ Machined sprocket



Other sprocket sizes are available upon request.

Other bore sizes on sprockets are available upon request.

Max. load per sprocket shown does not take bore size into account.

Please also ensure that sufficient size shaft is chosen for corresponding load.

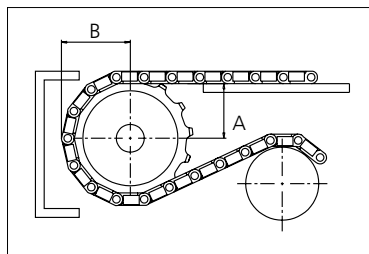
Width of tooth = Single row: 9.5 mm (0.37 in)

Width of One-part sprocket = Single row: 42.3 mm (1.67 in)

## uni UltraClean Two-Part Sprocket

No. of teeth	Bore size				Overall diameter		Pitch-diameter		Hub-diameter		Dimension A		Dimension B		Single row/One way	Moulded PA6 W
	in	1.50	1.57	2.36												
	mm	38.1	40.0	60.0	mm	in	mm	in	mm	in	mm	in				
Z8		■	■		132.9	5.23	132.8	5.23	80.0	3.15	53.3	2.10	74.9	2.94	✓	✓
Z10		1 ■	1 ■	2 ■	166.3	6.55	164.4	6.47	<sup>1</sup> 126.0 <sup>2</sup> 118.0	<sup>1</sup> 4.96 <sup>2</sup> 4.65	70.2	2.76	90.7	3.57	✓	✓
Z12		1 ■	1 ■	2 ■	198.6	7.82	196.3	7.73	<sup>1</sup> 126.0 <sup>2</sup> 118.0	<sup>1</sup> 4.96 <sup>2</sup> 4.65	86.8	3.42	106.6	4.19	✓	✓

■ Moulded uni UltraClean TwoPart Sprocket



Width of UltraClean Two-part sprocket = Single row: 44.0 mm (1.73 in)

Width of UltraClean Two-part sprocket, tooth = Single row: 9.5 mm (0.37 in)

uni Retainer Rings: See uni Retainer Ring data sheet.

For correct sprocket position: See uni Assembly Instructions for uni BLB.

For more detailed sprocket information, contact Customer Service.