

**Paso de 38.1 mm (1.50 pulgadas)**



**uni Light EP – una banda para aplicaciones ligeras**

La banda de paso 1.5 pulgadas uni Light EP se ha desarrollado para aplicaciones ligeras como cocinado, escaldado y pasteurizado en la industria alimentaria. Sus distintas aperturas permiten un alto rendimiento con diversos productos alimenticios.

**La banda uni Light EP se usa normalmente en las siguientes industrias/aplicaciones:**

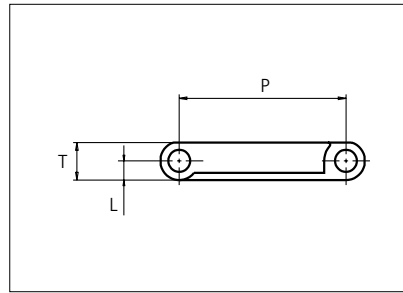
- Fruta y verdura, incluyendo elevadores, escaldadores, líneas de cocinado y pasteurizadores
- Pasta, incluyendo escaldadores, pasteurizadores y líneas de refrigeración
- Agricultura (maíz y arroz), incluyendo elevadores, escaldadores y líneas de cocinado
- Bebidas, incluyendo mesas de acumulación, pasteurizadores y paletizadoras

**Características del producto y ventajas de funcionamiento:**

- Gran surtido de aperturas, incluyendo apertura fina para drenaje de agua
- Refuerzo de acero, que evita el alargamiento de la banda en aplicaciones a temperaturas altas
- Soportes reforzados, para elevadores con carga y transportadores inclinados

# Plastic Modular Belt

Serie **uni Light EP** Type **C**



Straight running belt  
 Nominal pitch: 38.1 mm (1.50 in)  
 Surface type: Flat  
 Surface opening: Closed  
 Backflex radius: 75.0 mm (3.0 in)  
 Pin diameter: 5.0 mm (0.20 in)

<b>Recommended Belt material &amp; color</b>	POM-D	<b>mm</b>	<b>in</b>		<b>mm</b>	<b>in</b>	
<b>Recommended Pin and lock material &amp; color</b>	PP	<b>P (Nominal)</b>	38.1	1.50	<b>T</b>	8.5	0.33
		<b>L</b>	4.3	0.17	-	-	-

Non standard material and color: See uni Material and Color Overview.

Alternative materials: Belt: PP and PE Pin: PP PA6.6 PE PBT LG and SS304 PP B G PP W Lockpin: PBT LG PA6.6 N D

Belt width		Permissible tensile force (Belt/pin material)						Belt weight (Belt/pin material)						*Min. No. drive sprocket per shaft	Number of wear strips (Min. No.)	
		POM-D/PP		PP/PP		PE/PP		POM-D/PP		PP/PP		PE/PP			**Carry (pcs)	**Return (pcs)
mm	in	N	lbf	N	lbf	N	lbf	kg/m	lb/ft	kg/m	lb/ft	kg/m	lb/ft			
64	2.5	653	147	326	73	196	44	0.4	0.24	0.2	0.16	0.3	0.17	2	2	2
83	3.3	848	191	424	95	255	57	0.5	0.32	0.3	0.21	0.3	0.22	2	2	2
102	4.0	1046	235	523	118	314	71	0.6	0.39	0.4	0.25	0.4	0.27	2	2	2
115	4.5	1175	264	587	132	352	79	0.7	0.44	0.4	0.28	0.5	0.31	2	2	2
153	6.0	1568	353	784	176	470	106	0.9	0.59	0.6	0.38	0.6	0.41	2	2	2
191	7.5	1958	440	979	220	587	132	1.1	0.73	0.7	0.47	0.8	0.51	2	2	2
204	8.0	2091	470	1046	235	627	141	1.2	0.78	0.8	0.51	0.8	0.55	2	2	2
255	10.0	2614	588	1307	294	784	176	1.5	0.98	0.9	0.63	1.0	0.69	2	2	2
306	12.0	3137	705	1568	353	941	212	1.7	1.17	1.1	0.76	1.2	0.82	3	3	2
357	14.1	3659	823	1830	411	1098	247	2.0	1.37	1.3	0.89	1.4	0.96	3	3	2
408	16.1	4182	940	2091	470	1255	282	2.3	1.56	1.5	1.01	1.6	1.10	3	3	2
459	18.1	4705	1058	2352	529	1411	317	2.6	1.76	1.7	1.14	1.8	1.23	4	4	2
510	20.1	5228	1175	2614	588	1568	353	2.9	1.95	1.9	1.27	2.0	1.37	4	4	2

Additional standard belt widths are available in steps of 50.9 mm (2.00 in). Additional non-standard belt widths are available in steps of 12.7 mm (0.50 in).

1987	78.2	20367	4578	10183	2289	6110	1374	11.3	7.61	7.4	4.94	7.9	5.34	14	14	7
------	------	-------	------	-------	------	------	------	------	------	-----	------	-----	------	----	----	---

Additional standard belt widths are available in steps of 50.9 mm (2.00 in). Additional non-standard belt widths are available in steps of 12.7 mm (0.50 in).

2955	116.3	30289	6809	15144	3404	9087	2043	16.8	11.32	10.9	7.35	11.8	7.94	20	20	10
------	-------	-------	------	-------	------	------	------	------	-------	------	------	------	------	----	----	----

General belt tolerance is +0/-0.4% at 23°C/73°F and 50% RH. For exact belt width contact Customer Service. Non standard belt width on request.

\*Max. Load per Drive Sprocket. Belt material: POM-D 1000 N (225 lbf). PP 600 N (135 lbf). PE 600 N (135 lbf)

\*\*Max. Spacing between wear strips. Carry: 152.0 mm (6.00 in); Return: 304.0 mm (12.00 in)

= Single Link



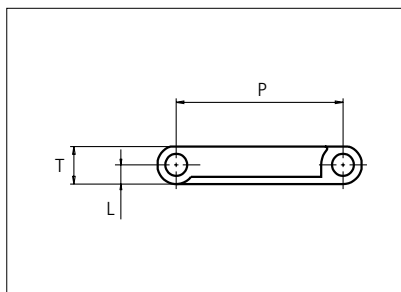
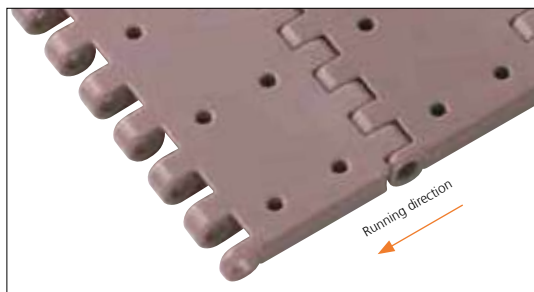
NON STANDARD

STRAIGHT RUNNING

PITCH 38.1 MM/1.50 IN

# Plastic Modular Belt

Serie **uni Light EP** Type **Vacuum**



Straight running belt  
 Nominal pitch: 38.1 mm (1.50 in)  
 Surface type: Flat  
 Surface opening: Closed  
 Backflex radius: 75.0 mm (3.0 in)  
 Pin diameter: 5.0 mm (0.13 in)

**Vacuum holes: ø3.2 mm (0.13 in)**

<b>Recommended Belt material &amp; color</b>	POM-LF <b>BR</b>	<b>mm</b>	<b>in</b>		<b>mm</b>	<b>in</b>	
<b>Recommended Pin and lock material &amp; color</b>	PP <b>W</b>	<b>P (Nominal)</b>	38.1	1.50	<b>T</b>	8.5	0.33
		<b>L</b>	4.3	0.17	-	-	-

Non standard material and color: See uni Material and Color Overview.

Alternative materials: Belt: PP and PE Pin: PP **W** PA6.6 **B** PE **W** PBT **LG** and SS304 PP **W** **B** **G** Lockpin: PBT **LG** PA6.6 **N** **D**

Belt width		Permissible tensile force (Belt/pin material)						Belt weight (Belt/pin material)						*Min. No. drive sprocket per shaft	Number of wear strips (Min. No.)	
		POM-D/PP		PP/PP		PE/PP		POM-D/PP		PP/PP		PE/PP			**Carry (pcs)	**Return (pcs)
mm	in	N	lbf	N	lbf	N	lbf	kg/m	lb/ft	kg/m	lb/ft	kg/m	lb/ft			
102	4.0	1046	235	523	118	314	71	0.6	0.39	0.4	0.25	0.4	0.27	2	2	2
153	6.0	1568	353	784	176	470	106	0.9	0.59	0.6	0.38	0.6	0.41	2	2	2
204	8.0	2091	470	1046	235	627	141	1.2	0.78	0.8	0.51	0.8	0.55	2	2	2
255	10.0	2614	588	1307	294	784	176	1.5	0.98	0.9	0.63	1.0	0.69	2	2	2
306	12.0	3137	705	1568	353	941	212	1.7	1.17	1.1	0.76	1.2	0.82	3	3	2
357	14.1	3659	823	1830	411	1098	247	2.0	1.37	1.3	0.89	1.4	0.96	3	3	2
408	16.1	4182	940	2091	470	1255	282	2.3	1.56	1.5	1.01	1.6	1.10	3	3	2
459	18.1	4705	1058	2352	529	1411	317	2.6	1.76	1.7	1.14	1.8	1.23	4	4	2
510	20.1	5228	1175	2614	588	1568	353	2.9	1.95	1.9	1.27	2.0	1.37	4	4	2
561	22.1	5750	1293	2875	646	1725	388	3.2	2.15	2.1	1.39	2.2	1.51	4	4	2
612	24.1	6273	1410	3137	705	1882	423	3.5	2.34	2.3	1.52	2.4	1.65	5	5	3
663	26.1	6796	1528	3398	764	2039	458	3.8	2.54	2.5	1.65	2.7	1.78	5	5	3
714	28.1	7319	1645	3659	823	2196	494	4.1	2.74	2.6	1.78	2.9	1.92	5	5	3

Additional standard belt widths are available in steps of 50.9 mm (2.00 in). Additional non-standard belt widths are available in steps of 12.7 mm (0.50 in).

1987	78.2	20367	4578	10183	2289	6110	1374	11.3	7.61	7.4	4.94	7.9	5.34	14	14	7
------	------	-------	------	-------	------	------	------	------	------	-----	------	-----	------	----	----	---

Additional standard belt widths are available in steps of 50.9 mm (2.00 in). Additional non-standard belt widths are available in steps of 12.7 mm (0.50 in).

2955	116.3	30289	6809	15144	3404	9087	2043	16.8	11.32	10.9	7.35	11.8	7.94	20	20	10
------	-------	-------	------	-------	------	------	------	------	-------	------	------	------	------	----	----	----

General belt tolerance is +/-0.4% at 23°C/73°F and 50% RH. For exact belt width contact Customer Service. Non standard belt width on request.

\*Max. Load per Drive Sprocket. Belt material: POM-D 1000 N (225 lbf). PP 600 N (135 lbf). PE 600 N (135 lbf)

\*\*Max. Spacing between wear strips. Carry: 152.0 mm (6.00 in); Return: 304.0 mm (12.00 in).

= Single Link



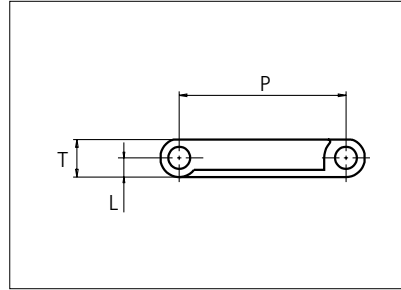
NON STANDARD

STRAIGHT RUNNING

PITCH 38.1 MM/1.50 IN

# Plastic Modular Belt

Serie **uni Light EP** Type **8.5%**



Straight running belt  
 Nominal pitch: 38.1 mm (1.50 in)  
 Surface type: Flat  
 Surface opening: 8.5%  
 Backflex radius: 75.0 mm (3.0 in)  
 Pin diameter: 5.0 mm (0.20 in)

<b>Recommended Belt material &amp; color</b>	POM-D		<b>mm</b>	<b>in</b>		<b>mm</b>	<b>in</b>	
<b>Recommended Pin and lock material &amp; color</b>	PP		<b>P (Nominal)</b>	38.1	1.50	<b>T</b>	8.5	0.33
			<b>L</b>	4.3	0.17	-	-	-

Non standard material and color: See uni Material and Color Overview.

Alternative materials: Belt: PP and PE Pin: PP PA6.6 PE PBT LG and SS304 PP B G PP W

Lockpin: PBT LG PA6.6 N D

Belt width		Permissible tensile force (Belt/pin material)						Belt weight (Belt/pin material)						*Min. No. drive sprocket per shaft	Number of wear strips (Min. No.)	
		POM-D/PP		PP/PP		PE/PP		POM-D/PP		PP/PP		PE/PP			**Carry (pcs)	**Return (pcs)
mm	in	N	lbf	N	lbf	N	lbf	kg/m	lb/ft	kg/m	lb/ft	kg/m	lb/ft			
102	4.0	1046	235	523	118	314	71	0.6	0.39	0.4	0.25	0.4	0.27	2	2	2
153	6.0	1568	353	784	176	470	106	0.9	0.59	0.6	0.38	0.6	0.41	2	2	2
204	8.0	2091	470	1046	235	627	141	1.2	0.78	0.8	0.51	0.8	0.55	2	2	2
255	10.0	2614	588	1307	294	784	176	1.5	0.98	0.9	0.63	1.0	0.69	2	2	2
306	12.0	3137	705	1568	353	941	212	1.7	1.17	1.1	0.76	1.2	0.82	3	3	2
357	14.1	3659	823	1830	411	1098	247	2.0	1.37	1.3	0.89	1.4	0.96	3	3	2
408	16.1	4182	940	2091	470	1255	282	2.3	1.56	1.5	1.01	1.6	1.10	3	3	2
459	18.1	4705	1058	2352	529	1411	317	2.6	1.76	1.7	1.14	1.8	1.23	4	4	2
510	20.1	5228	1175	2614	588	1568	353	2.9	1.95	1.9	1.27	2.0	1.37	4	4	2
561	22.1	5750	1293	2875	646	1725	388	3.2	2.15	2.1	1.39	2.2	1.51	4	4	2
612	24.1	6273	1410	3137	705	1882	423	3.5	2.34	2.3	1.52	2.4	1.65	5	5	3
663	26.1	6796	1528	3398	764	2039	458	3.8	2.54	2.5	1.65	2.7	1.78	5	5	3
714	28.1	7319	1645	3659	823	2196	494	4.1	2.74	2.6	1.78	2.9	1.92	5	5	3

Additional standard belt widths are available in steps of 50.9 mm (2.00 in). Additional non-standard belt widths are available in steps of 12.7 mm (0.50 in).

1987	78.2	20367	4578	10183	2289	6110	1374	11.3	7.61	7.4	4.94	7.9	5.34	14	14	7
------	------	-------	------	-------	------	------	------	------	------	-----	------	-----	------	----	----	---

Additional standard belt widths are available in steps of 50.9 mm (2.00 in). Additional non-standard belt widths are available in steps of 12.7 mm (0.50 in).

2955	116.3	30289	6809	15144	3404	9087	2043	16.8	11.32	10.9	7.35	11.8	7.94	20	20	10
------	-------	-------	------	-------	------	------	------	------	-------	------	------	------	------	----	----	----

General belt tolerance is +0/-0.4% at 23°C/73°F and 50% RH. For exact belt width contact Customer Service. Non standard belt width on request.

\*Max. Load per Drive Sprocket. Belt material: POM-D 1000 N (225 lbf). PP 600 N (135 lbf). PE 600 N (135 lbf)

\*\*Max. Spacing between wear strips. Carry: 152.0 mm (6.00 in); Return: 304.0 mm (12.00 in)

= Single Link



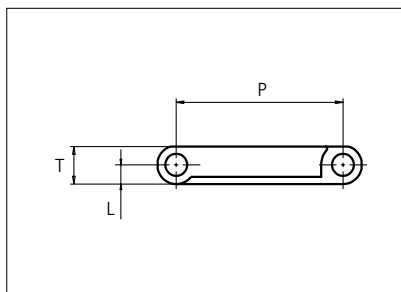
NON STANDARD

STRAIGHT RUNNING

PITCH 38.1 MM/1.50 IN

# Plastic Modular Belt

Serie **uni Light EP** Type **18%**



Straight running belt  
 Nominal pitch: 38.1 mm (1.50 in)  
 Surface type: Flat  
 Surface opening: 18%  
 Backflex radius: 75.0 mm (3.0 in)  
 Pin diameter: 5.0 mm (0.20 in)

<b>Recommended Belt material &amp; color</b>	POM-D	<b>mm</b>	<b>in</b>		<b>mm</b>	<b>in</b>	
<b>Recommended Pin and lock material &amp; color</b>	PP	<b>P (Nominal)</b>	38.1	1.50	<b>T</b>	8.5	0.33
		<b>L</b>	4.3	0.17	-	-	-

Non standard material and color: See uni Material and Color Overview.

Alternative materials: Belt: PP and PE Pin: PP PA6.6 B PE W PBT LG and SS304 PP W B G PP W Lockpin: PBT LG PA6.6 N D

Belt width		Permissible tensile force (Belt/pin material)						Belt weight (Belt/pin material)						*Min. No. drive sprocket per shaft	Number of wear strips (Min. No.)	
		POM-D/PP		PP/PP		PE/PP		POM-D/PP		PP/PP		PE/PP			**Carry (pcs)	**Return (pcs)
mm	in	N	lbf	N	lbf	N	lbf	kg/m	lb/ft	kg/m	lb/ft	kg/m	lb/ft			
102	4.0	1046	235	523	118	314	71	0.5	0.33	0.3	0.23	0.4	0.25	2	2	2
153	6.0	1568	353	784	176	470	106	0.7	0.49	0.5	0.35	0.6	0.37	2	2	2
204	8.0	2091	470	1046	235	627	141	1.0	0.66	0.7	0.47	0.7	0.49	2	2	2
255	10.0	2614	588	1307	294	784	176	1.2	0.82	0.9	0.58	0.9	0.62	2	2	2
306	12.0	3137	705	1568	353	941	212	1.5	0.99	1.0	0.70	1.1	0.74	3	3	2
357	14.1	3659	823	1830	411	1098	247	1.7	1.15	1.2	0.82	1.3	0.86	3	3	2
408	16.1	4182	940	2091	470	1255	282	2.0	1.32	1.4	0.93	1.5	0.99	3	3	2
459	18.1	4705	1058	2352	529	1411	317	2.2	1.48	1.6	1.05	1.7	1.11	4	4	2
510	20.1	5228	1175	2614	588	1568	353	2.4	1.65	1.7	1.17	1.8	1.23	4	4	2
561	22.1	5750	1293	2875	646	1725	388	2.7	1.81	1.9	1.28	2.0	1.36	4	4	2
612	24.1	6273	1410	3137	705	1882	423	2.9	1.97	2.1	1.40	2.2	1.48	5	5	3
663	26.1	6796	1528	3398	764	2039	458	3.2	2.14	2.3	1.51	2.4	1.60	5	5	3
714	28.1	7319	1645	3659	823	2196	494	3.4	2.30	2.4	1.63	2.6	1.73	5	5	3

Additional standard belt widths are available in steps of 50.9 mm (2.00 in). Additional non-standard belt widths are available in steps of 12.7 mm (0.50 in).

1987	78.2	20367	4578	10183	2289	6110	1374	9.5	6.41	6.8	4.54	7.2	4.81	14	14	7
------	------	-------	------	-------	------	------	------	-----	------	-----	------	-----	------	----	----	---

Additional standard belt widths are available in steps of 50.9 mm (2.00 in). Additional non-standard belt widths are available in steps of 12.7 mm (0.50 in).

2955	116.3	30289	6809	15144	3404	9087	2043	14.2	9.53	10.0	6.75	10.6	7.15	20	20	10
------	-------	-------	------	-------	------	------	------	------	------	------	------	------	------	----	----	----

General belt tolerance is +0/-0.4% at 23°C/73°F and 50% RH. For exact belt width contact Customer Service. Non standard belt width on request.

\*Max. Load per Drive Sprocket. Belt material: POM-D 1000 N (225 lbf). PP 600 N (135 lbf). PE 600 N (135 lbf)

\*\*Max. Spacing between wear strips. Carry: 152.0 mm (6.00 in); Return: 304.0 mm (12.00 in)

= Single Link



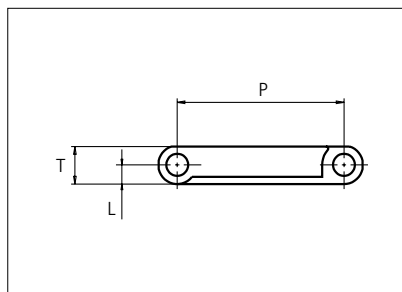
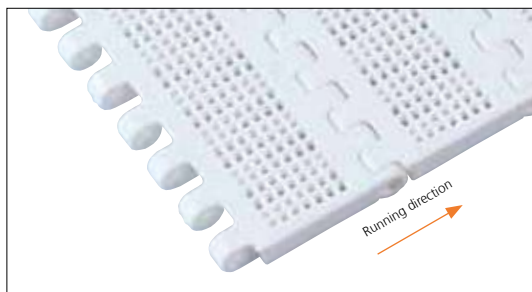
NON STANDARD

STRAIGHT RUNNING

PITCH 38.1 MM/1.50 IN

# Plastic Modular Belt

Serie **uni Light EP** Type **22%**



Straight running belt  
 Nominal pitch: 38.1 mm (1.50 in)  
 Surface type: Flat  
 Surface opening: 22%  
 Backflex radius: 75.0 mm (3.0 in)  
 Pin diameter: 5.0 mm (0.20 in)

<b>Recommended Belt material &amp; color</b>	POM-D	<b>mm</b>	<b>in</b>		<b>mm</b>	<b>in</b>	
<b>Recommended Pin and lock material &amp; color</b>	PP	<b>P (Nominal)</b>	38.1	1.50	<b>T</b>	8.5	0.33
		<b>L</b>	4.3	0.17	-	-	-

Non standard material and color: See uni Material and Color Overview.

Alternative materials: Belt: PP and PE Pin: PP PA6.6 PE PBT LG and SS304 PP B G PP W

Lockpin: PBT LG PA6.6 N D

Belt width		Permissible tensile force (Belt/pin material)						Belt weight (Belt/pin material)						*Min. No. drive sprocket per shaft	Number of wear strips (Min. No.)	
		POM-D/PP		PP/PP		PE/PP		POM-D/PP		PP/PP		PE/PP			**Carry (pcs)	**Return (pcs)
mm	in	N	lbf	N	lbf	N	lbf	kg/m	lb/ft	kg/m	lb/ft	kg/m	lb/ft			
102	4.0	1046	235	523	118	314	71	0.5	0.33	0.3	0.23	0.4	0.25	2	2	2
153	6.0	1568	353	784	176	470	106	0.7	0.49	0.5	0.35	0.6	0.37	2	2	2
204	8.0	2091	470	1046	235	627	141	1.0	0.66	0.7	0.47	0.7	0.49	2	2	2
255	10.0	2614	588	1307	294	784	176	1.2	0.82	0.9	0.58	0.9	0.62	2	2	2
306	12.0	3137	705	1568	353	941	212	1.5	0.99	1.0	0.70	1.1	0.74	3	3	2
357	14.1	3659	823	1830	411	1098	247	1.7	1.15	1.2	0.82	1.3	0.86	3	3	2
408	16.1	4182	940	2091	470	1255	282	2.0	1.32	1.4	0.93	1.5	0.99	3	3	2
459	18.1	4705	1058	2352	529	1411	317	2.2	1.48	1.6	1.05	1.7	1.11	4	4	2
510	20.1	5228	1175	2614	588	1568	353	2.4	1.65	1.7	1.17	1.8	1.23	4	4	2
561	22.1	5750	1293	2875	646	1725	388	2.7	1.81	1.9	1.28	2.0	1.36	4	4	2
612	24.1	6273	1410	3137	705	1882	423	2.9	1.97	2.1	1.40	2.2	1.48	5	5	3
663	26.1	6796	1528	3398	764	2039	458	3.2	2.14	2.3	1.51	2.4	1.60	5	5	3
714	28.1	7319	1645	3659	823	2196	494	3.4	2.30	2.4	1.63	2.6	1.73	5	5	3

Additional standard belt widths are available in steps of 50.9 mm (2.00 in). Additional non-standard belt widths are available in steps of 12.7 mm (0.50 in).

1987	78.2	20367	4578	10183	2289	6110	1374	9.5	6.41	6.8	4.54	7.2	4.81	14	14	7
------	------	-------	------	-------	------	------	------	-----	------	-----	------	-----	------	----	----	---

Additional standard belt widths are available in steps of 50.9 mm (2.00 in). Additional non-standard belt widths are available in steps of 12.7 mm (0.50 in).

2955	116.3	30289	6809	15144	3404	9087	2043	14.2	9.53	10.0	6.75	10.6	7.15	20	20	10
------	-------	-------	------	-------	------	------	------	------	------	------	------	------	------	----	----	----

General belt tolerance is +0/-0.4% at 23°C/73°F and 50% RH. For exact belt width contact Customer Service. Non standard belt width on request.

\*Max. Load per Drive Sprocket. Belt material: POM-D 1000 N (225 lbf). PP 600 N (135 lbf). PE 600 N (135 lbf)

\*\*Max. Spacing between wear strips. Carry: 152.0 mm (6.00 in); Return: 304.0 mm (12.00 in).

= Single Link



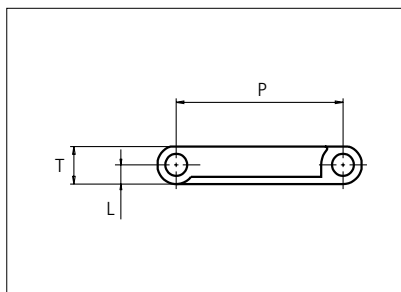
NON STANDARD

STRAIGHT RUNNING

PITCH 38.1 MM/1.50 IN

# Plastic Modular Belt

Serie **uni Light EP** Type **22% Fine-meshed**



Straight running belt  
 Nominal pitch: 38.1 mm (1.50 in)  
 Surface type: Flat  
 Surface opening: 22%  
 Backflex radius: 75.0 mm (3.0 in)  
 Pin diameter: 5.0 mm (0.20 in)

Belt material & color	PP-HW <b>W</b>	PP-HW <b>B</b>	mm	in	mm	in		
	PP-HW <b>W</b>	PP-HW <b>B</b>						
Pin and lock material & color	PP-HW <b>W</b> PP-HW <b>W</b>	PP-HW <b>B</b> PP-HW <b>B</b>	P (Nominal)	38.1	1.50	T	8.5	0.33
				L	4.3		0.17	-

Non standard material and color: See uni Material and Color Overview.

Alternative pin and lock materials: Pin: PE **W** PP-HW **W** **B** SS304 Lockpin: PBT **LG** PA6.6 **N** **D**

Belt width		Permissible tensile force (Belt/pin material)		Belt weight (Belt/pin material)		*Min. No. drive sprocket per shaft	Number of wear strips (Min. No.)	
		PP-HW		PP-HW			**Carry (pcs)	**Return (pcs)
mm	in	N	lbf	kg/m	lb/ft			
64	2.5	325	73	0.2	0.15	2	2	2
102	4.0	523	118	0.3	0.23	2	2	2
153	6.0	784	176	0.5	0.35	2	2	2
191	7.5	979	220	0.6	0.44	2	2	2
204	8.0	1046	235	0.7	0.47	2	2	2
255	10.0	1307	294	0.9	0.58	2	2	2
306	12.0	1568	353	1.0	0.70	3	3	2
357	14.1	1830	411	1.2	0.82	3	3	2
408	16.1	2091	470	1.4	0.93	3	3	2
459	18.1	2352	529	1.6	1.05	4	4	2
510	20.1	2614	588	1.7	1.17	4	4	2
561	22.1	2875	646	1.9	1.28	4	4	2
612	24.1	3137	705	2.1	1.40	5	5	3

Additional standard belt widths are available in steps of 50.9 mm (2.00 in). Additional non-standard belt widths are available in steps of 12.7 mm (0.50 in).

1987	78.2	10183	2289	6.8	4.54	14	14	7
------	------	-------	------	-----	------	----	----	---

Additional standard belt widths are available in steps of 50.9 mm (2.00 in). Additional non-standard belt widths are available in steps of 12.7 mm (0.50 in).

2955	116.3	15144	3404	10.0	6.75	20	20	10
------	-------	-------	------	------	------	----	----	----

General belt tolerance is +0/-0.4% at 23°C/73°F and 50% RH. For exact belt width contact Customer Service. Non standard belt width on request.

\*Max. Load per Drive Sprocket. Belt material: PP-HW 600 N (135 lbf)

\*\*Max. Spacing between wear strips. Carry: 152.0 mm (6.00 in); Return: 304.0 mm (12.00 in)

= Single Link



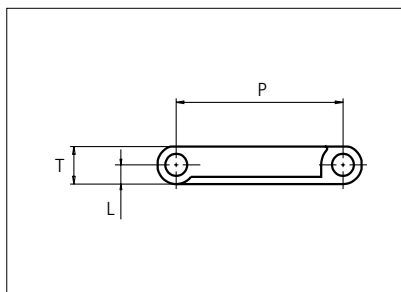
STANDARD

STRAIGHT RUNNING

PITCH 38.1 MM/1.50 IN

# Plastic Modular Belt

Serie **uni Light EP** Type **28%**



Straight running belt  
 Nominal pitch: 38.1 mm (1.50 in)  
 Surface type: Flat  
 Surface opening: 28%  
 Backflex radius: 75.0 mm (3.0 in)  
 Pin diameter: 5.0 mm (0.20 in)

<b>Recommended Belt material &amp; color</b>	POM-D	<b>mm</b>	<b>in</b>		<b>mm</b>	<b>in</b>	
<b>Recommended Pin and lock material &amp; color</b>	PP	<b>P (Nominal)</b>	38.1	1.50	<b>T</b>	8.5	0.33
		<b>L</b>	4.3	0.17	-	-	-

Non standard material and color: See uni Material and Color Overview.

Alternative materials: Belt: PP and PE Pin: PP PA6.6 PE PBT and SS304 PP PP

Lockpin: PBT PA6.6

Belt width		Permissible tensile force (Belt/pin material)						Belt weight (Belt/pin material)						*Min. No. drive sprocket per shaft	Number of wear strips (Min. No.)	
		POM-D/PP		PP/PP		PE/PP		POM-D/PP		PP/PP		PE/PP			**Carry (pcs)	**Return (pcs)
mm	in	N	lbf	N	lbf	N	lbf	kg/m	lb/ft	kg/m	lb/ft	kg/m	lb/ft			
102	4.0	1046	235	523	118	314	71	0.5	0.33	0.3	0.23	0.4	0.25	2	2	2
153	6.0	1568	353	784	176	470	106	0.7	0.49	0.5	0.35	0.6	0.37	2	2	2
191	7.5	1958	440	979	220	587	132	0.9	0.62	0.6	0.44	0.7	0.46	2	2	2
204	8.0	2091	470	1046	235	627	141	1.0	0.66	0.7	0.47	0.7	0.49	2	2	2
255	10.0	2614	588	1307	294	784	176	1.2	0.82	0.9	0.58	0.9	0.62	2	2	2
306	12.0	3137	705	1568	353	941	212	1.5	0.99	1.0	0.70	1.1	0.74	3	3	2
357	14.1	3659	823	1830	411	1098	247	1.7	1.15	1.2	0.82	1.3	0.86	3	3	2
408	16.1	4182	940	2091	470	1255	282	2.0	1.32	1.4	0.93	1.5	0.99	3	3	2
459	18.1	4705	1058	2352	529	1411	317	2.2	1.48	1.6	1.05	1.7	1.11	4	4	2
510	20.1	5228	1175	2614	588	1568	353	2.4	1.65	1.7	1.17	1.8	1.23	4	4	2
561	22.1	5750	1293	2875	646	1725	388	2.7	1.81	1.9	1.28	2.0	1.36	4	4	2
612	24.1	6273	1410	3137	705	1882	423	2.9	1.97	2.1	1.40	2.2	1.48	5	5	3
663	26.1	6796	1528	3398	764	2039	458	3.2	2.14	2.3	1.51	2.4	1.60	5	5	3

Additional standard belt widths are available in steps of 50.9 mm (2.00 in). Additional non-standard belt widths are available in steps of 12.7 mm (0.50 in).

1987	78.2	20367	4578	10183	2289	6110	1374	9.5	6.41	6.8	4.54	7.2	4.81	14	14	7
------	------	-------	------	-------	------	------	------	-----	------	-----	------	-----	------	----	----	---

Additional standard belt widths are available in steps of 50.9 mm (2.00 in). Additional non-standard belt widths are available in steps of 12.7 mm (0.50 in).

2955	116.3	30289	6809	15144	3404	9087	2043	14.2	9.53	10.0	6.75	10.6	7.15	20	20	10
------	-------	-------	------	-------	------	------	------	------	------	------	------	------	------	----	----	----

General belt tolerance is +/-0.4% at 23°C/73°F and 50% RH. For exact belt width contact Customer Service. Non standard belt width on request.

\*Max. Load per Drive Sprocket. Belt material: POM-D 1000 N (225 lbf). PP 600 N (135 lbf). PE 600 N (135 lbf)

\*\*Max. Spacing between wear strips. Carry: 152.0 mm (6.00 in); Return: 304.0 mm (12.00 in)

= Single Link



NON STANDARD

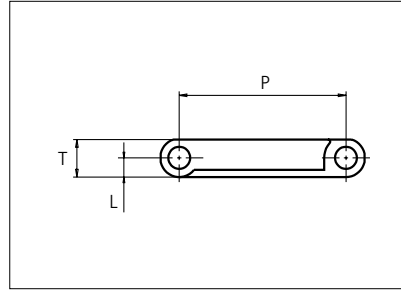
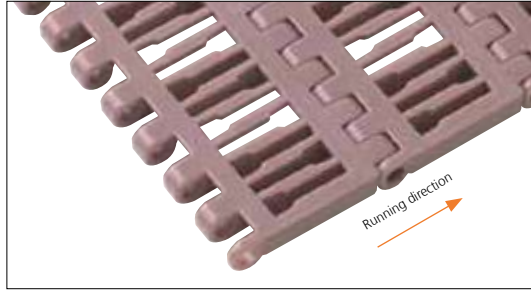
STRAIGHT RUNNING

PITCH 38.1 MM/1.50 IN



# Plastic Modular Belt

Serie **uni Light EP** Type **33%**



Straight running belt  
 Nominal pitch: 38.1 mm (1.50 in)  
 Surface type: Flat  
 Surface opening: 33%  
 Backflex radius: 75.0 mm (3.0 in)  
 Pin diameter: 5.0 mm (0.20 in)

<b>Recommended Belt material &amp; color</b>	POM-LF <b>BR</b>	<b>mm</b>	<b>in</b>		<b>mm</b>	<b>in</b>	
<b>Recommended Pin and lock material &amp; color</b>	PP <b>W</b>	<b>P (Nominal)</b>	38.1	1.50	<b>T</b>	8.5	0.33
		<b>L</b>	4.3	0.17	-	-	-

Non standard material and color: See uni Material and Color Overview.

Alternative materials: Belt: PP and PE Pin: PP **W** PA6.6 **B** PE **W** PBT **LG** and SS304 PP **W** **B** **G** Lockpin: PBT **LG** PA6.6 **N** **D**

Belt width		Permissible tensile force (Belt/pin material)						Belt weight (Belt/pin material)						*Min. No. drive sprocket per shaft	Number of wear strips (Min. No.)	
		POM-D/PP		PP/PP		PE/PP		POM-D/PP		PP/PP		PE/PP			**Carry (pcs)	**Return (pcs)
mm	in	N	lbf	N	lbf	N	lbf	kg/m	lb/ft	kg/m	lb/ft	kg/m	lb/ft			
102	4.0	1046	235	523	118	314	71	0.4	0.30	0.3	0.21	0.3	0.23	2	2	2
153	6.0	1568	353	784	176	470	106	0.7	0.45	0.5	0.32	0.5	0.34	2	2	2
191	7.5	1958	440	979	220	587	132	0.8	0.56	0.6	0.40	0.6	0.42	2	2	2
204	8.0	2091	470	1046	235	627	141	0.9	0.60	0.6	0.43	0.7	0.45	2	2	2
255	10.0	2614	588	1307	294	784	176	1.1	0.75	0.8	0.53	0.8	0.57	2	2	2
306	12.0	3137	705	1568	353	941	212	1.3	0.90	0.9	0.64	1.0	0.68	3	3	2
357	14.1	3659	823	1830	411	1098	247	1.6	1.06	1.1	0.74	1.2	0.79	3	3	2
408	16.1	4182	940	2091	470	1255	282	1.8	1.21	1.3	0.85	1.3	0.90	3	3	2
459	18.1	4705	1058	2352	529	1411	317	2.0	1.36	1.4	0.96	1.5	1.02	4	4	2
510	20.1	5228	1175	2614	588	1568	353	2.2	1.51	1.6	1.06	1.7	1.13	4	4	2
561	22.1	5750	1293	2875	646	1725	388	2.5	1.66	1.7	1.17	1.9	1.24	4	4	2
612	24.1	6273	1410	3137	705	1882	423	2.7	1.81	1.9	1.28	2.0	1.36	5	5	3
663	26.1	6796	1528	3398	764	2039	458	2.9	1.96	2.1	1.38	2.2	1.47	5	5	3

Additional standard belt widths are available in steps of 50.9 mm (2.00 in). Additional non-standard belt widths are available in steps of 12.7 mm (0.50 in).

1987	78.2	20367	4578	10183	2289	6110	1374	8.7	5.88	6.2	4.14	6.6	4.41	14	14	7
------	------	-------	------	-------	------	------	------	-----	------	-----	------	-----	------	----	----	---

Additional standard belt widths are available in steps of 50.9 mm (2.00 in). Additional non-standard belt widths are available in steps of 12.7 mm (0.50 in).

2955	116.3	30289	6809	15144	3404	9087	2043	13.0	8.74	9.2	6.16	9.8	6.55	20	20	10
------	-------	-------	------	-------	------	------	------	------	------	-----	------	-----	------	----	----	----

General belt tolerance is +/-0.4% at 23°C/73°F and 50% RH. For exact belt width contact Customer Service. Non standard belt width on request.

\*Max. Load per Drive Sprocket. Belt material: POM-D 1000 N (225 lbf). PP 600 N (135 lbf). PE 600 N (135 lbf)

\*\*Max. Spacing between wear strips. Carry: 152.0 mm (6.00 in); Return: 304.0 mm (12.00 in)

= Single Link



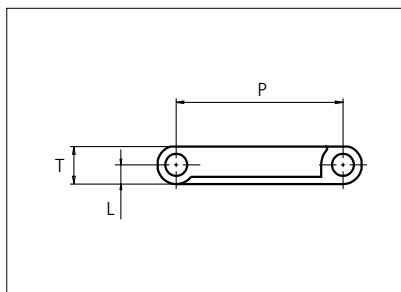
NON STANDARD

STRAIGHT RUNNING

PITCH 38.1 MM/1.50 IN

# Plastic Modular Belt

Serie **uni Light EP** Type **46%**



Straight running belt  
 Nominal pitch: 38.1 mm (1.50 in)  
 Surface type: Flat  
 Surface opening: 46%  
 Backflex radius: 75.0 mm (3.0 in)  
 Pin diameter: 5.0 mm (0.20 in)

<b>Recommended Belt material &amp; color</b>	POM-D	<b>mm</b>	<b>in</b>		<b>mm</b>	<b>in</b>	
<b>Recommended Pin and lock material &amp; color</b>	PP	<b>P (Nominal)</b>	38.1	1.50	<b>T</b>	8.5	0.33
		<b>L</b>	4.3	0.17	-	-	-

Non standard material and color: See uni Material and Color Overview.

Alternative materials: Belt: PP and PE Pin: PP PA6.6 PE PBT LG and SS304 PP B G PP W Lockpin: PBT LG PA6.6 N D

Belt width		Permissible tensile force (Belt/pin material)						Belt weight (Belt/pin material)						*Min. No. drive sprocket per shaft	Number of wear strips (Min. No.)	
		POM-D/PP		PP/PP		PE/PP		POM-D/PP		PP/PP		PE/PP			**Carry (pcs)	**Return (pcs)
mm	in	N	lbf	N	lbf	N	lbf	kg/m	lb/ft	kg/m	lb/ft	kg/m	lb/ft			
102	4.0	1046	235	523	118	314	71	0.4	0.30	0.3	0.21	0.3	0.23	2	2	2
153	6.0	1568	353	784	176	470	106	0.7	0.45	0.5	0.32	0.5	0.34	2	2	2
204	8.0	2091	470	1046	235	627	141	0.9	0.60	0.6	0.43	0.7	0.45	2	2	2
255	10.0	2614	588	1307	294	784	176	1.1	0.75	0.8	0.53	0.8	0.57	2	2	2
306	12.0	3137	705	1568	353	941	212	1.3	0.90	0.9	0.64	1.0	0.68	3	3	2
357	14.1	3659	823	1830	411	1098	247	1.6	1.06	1.1	0.74	1.2	0.79	3	3	2
408	16.1	4182	940	2091	470	1255	282	1.8	1.21	1.3	0.85	1.3	0.90	3	3	2
459	18.1	4705	1058	2352	529	1411	317	2.0	1.36	1.4	0.96	1.5	1.02	4	4	2
510	20.1	5228	1175	2614	588	1568	353	2.2	1.51	1.6	1.06	1.7	1.13	4	4	2
561	22.1	5750	1293	2875	646	1725	388	2.5	1.66	1.7	1.17	1.9	1.24	4	4	2
612	24.1	6273	1410	3137	705	1882	423	2.7	1.81	1.9	1.28	2.0	1.36	5	5	3
663	26.1	6796	1528	3398	764	2039	458	2.9	1.96	2.1	1.38	2.2	1.47	5	5	3
714	28.1	7319	1645	3659	823	2196	494	3.1	2.11	2.2	1.49	2.4	1.58	5	5	3

Additional standard belt widths are available in steps of 50.9 mm (2.00 in). Additional non-standard belt widths are available in steps of 12.7 mm (0.50 in).

1987	78.2	20367	4578	10183	2289	6110	1374	8.7	5.88	6.2	4.14	6.6	4.41	14	14	7
------	------	-------	------	-------	------	------	------	-----	------	-----	------	-----	------	----	----	---

Additional standard belt widths are available in steps of 50.9 mm (2.00 in). Additional non-standard belt widths are available in steps of 12.7 mm (0.50 in).

2955	116.3	30289	6809	15144	3404	9087	2043	13.0	8.74	9.2	6.16	9.8	6.55	20	20	10
------	-------	-------	------	-------	------	------	------	------	------	-----	------	-----	------	----	----	----

General belt tolerance is +0/-0.4% at 23°C/73°F and 50% RH. For exact belt width contact Customer Service. Non standard belt width on request.

\*Max. Load per Drive Sprocket. Belt material: POM-D 1000 N (225 lbf). PP 600 N (135 lbf). PE 600 N (135 lbf).

\*\*Max. Spacing between wear strips. Carry: 152.0 mm (6.00 in); Return: 304.0 mm (12.00 in).

= Single Link



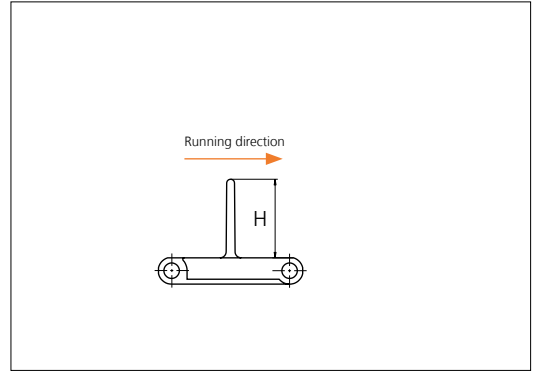
NON STANDARD

STRAIGHT RUNNING

PITCH 38.1 MM/1.50 IN

## Accessories

### Flight



Type	Recommended Material & color	H		Link size	Width		Indent left/right	
		mm	in		mm	in	mm	in
Non Stick	POM-D <b>W</b>	25.4	1.00	K750	191.0	7.52	0.0	0.00
		50.8	2.00				17.5	0.69
Non Stick/ Support Ribs	POM-D <b>W</b>	25.4	1.00	K400	101.6	4.00	0.0	0.00
				K600	152.8	6.02	0.0	0.00
		50.8	2.00	K400	101.6	4.00	0.0	0.00
				K600	152.8	6.02	0.0	0.00
76.2	3.00	K600	152.8	6.02	0.0	0.00		

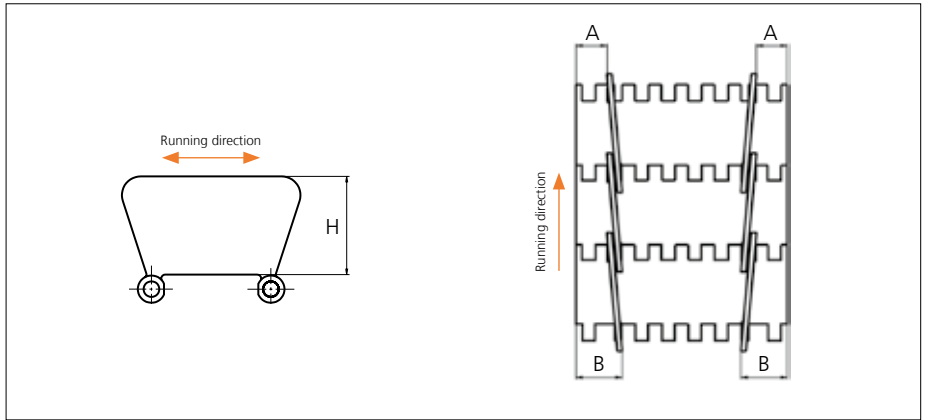
Minimum bricklaid indent for uni Light EP flights is 38.1 mm (1.50 in), increment: 12.7 mm (0.50 in).

Alternative materials: PP-I, PE.

Non Standard material and color: See uni Material and Color Overview.

## Accessories

### Side Guard

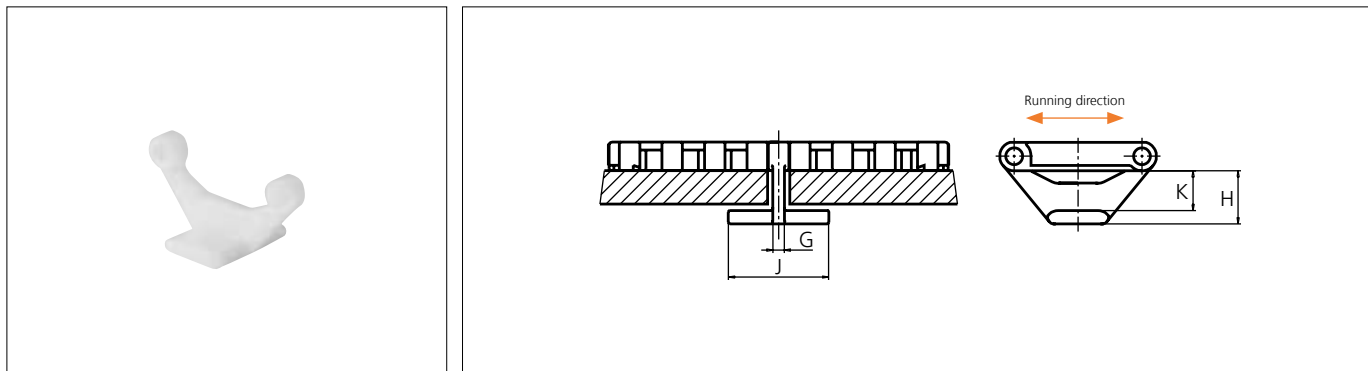


Type	Recommended Material & color	H		A		B	
		mm	in	mm	in	mm	in
Closed	POM-D <b>W</b>	31.7	1.25	15.0	0.59	23.0	0.91

Other Non Standard material and color: See uni Material and Color Overview.

## Accessories

### Tab/NON STANDARD



Type	Reccomended Material & color	G		J		K		H	
		mm	in	mm	in	mm	in	mm	in
Bottom Hold Down	POM-D	3.5	0.14	26.0	1.02	12.4	0.49	16.4	0.65

Other Non Standard material and color: See uni Material and Color Overview.

## Accessories

### Reinforcement Link



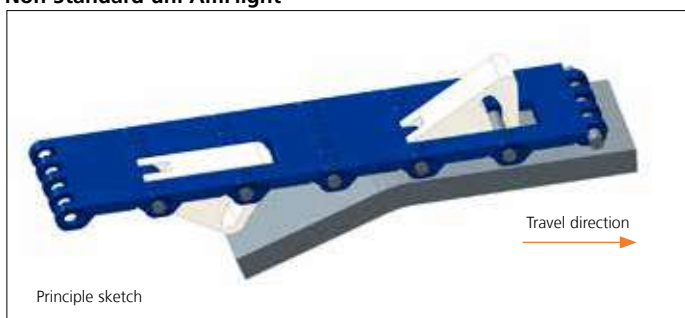
The use of uni-chains belts with the SS reinforcement /pitch control links in blanchers, cookers and other high temperature applications will reduce belt elongation due to temperature by more than 90%. This will simplify the belt take-up system and reduce maintenance. uni-chains recommends one reinforcement link per K600 module.  
Note: Reinforcement links require the use of SS pins.

Type	Material & color	N/row	Lbf/row
Steel Link	SS316	1000	225

Non Standard material and color: See uni Material and Color Overview.

## Accessories

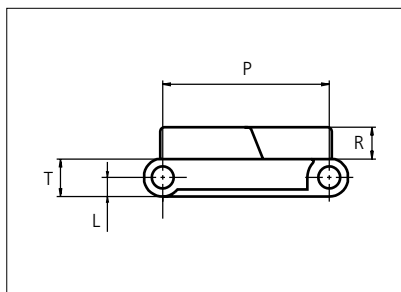
### Non Standard uni AmFlight



Other Non Standard option: See uni AmFlight Overview.

# Plastic Modular Belt

Serie **uni Light EP** Type **Rib**



Straight running belt  
 Nominal pitch: 38.1 mm (1.50 in)  
 Surface type: Rib Top  
 Surface opening: Closed  
 Backflex radius: 150.0 mm (5.9 in)  
 Pin diameter: 5.0 mm (0.20 in)

<b>Recommended Belt material &amp; color</b>	POM-LF <b>G</b>	<b>mm</b>	<b>in</b>	<b>mm</b>	<b>in</b>		
<b>Recommended Pin and lock material &amp; color</b>	PP <b>W</b>	<b>P (Nominal)</b>	38.1	1.50	<b>T</b>	8.5	0.33
		<b>L</b>	4.3	0.17	<b>R</b>	7.3	0.29

Non standard material and color: See uni Material and Color Overview.

Alternative materials: Belt: PP and PE Pin: PP **W** PA6.6 **B** PE **W** PBT **LG** and SS304 PP **W** **B** **G** Lockpin: PBT **LG** PA6.6 **N** **D**

Belt width		Permissible tensile force (Belt/pin material)						Belt weight (Belt/pin material)						*Min. No. drive sprocket per shaft	Number of wear strips (Min. No.)	
		POM-D/PP		PP/PP		PE/PP		POM-D/PP		PP/PP		PE/PP			**Carry (pcs)	**Return (pcs)
mm	in	N	lbf	N	lbf	N	lbf	kg/m	lb/ft	kg/m	lb/ft	kg/m	lb/ft			
102	4.0	1046	235	523	118	314	71	0.7	0.49	0.5	0.32	0.5	0.34	2	2	2
153	6.0	1568	353	784	176	470	106	1.1	0.73	0.7	0.47	0.8	0.51	2	2	2
204	8.0	2091	470	1046	235	627	141	1.4	0.97	0.9	0.63	1.0	0.69	2	2	2
255	10.0	2614	588	1307	294	784	176	1.8	1.22	1.2	0.79	1.3	0.86	2	2	2
306	12.0	3137	705	1568	353	941	212	2.2	1.46	1.4	0.95	1.5	1.03	3	3	2
357	14.1	3659	823	1830	411	1098	247	2.5	1.70	1.6	1.10	1.8	1.20	3	3	2
408	16.1	4182	940	2091	470	1255	282	2.9	1.95	1.9	1.26	2.0	1.37	3	3	2
459	18.1	4705	1058	2352	529	1411	317	3.3	2.19	2.1	1.42	2.3	1.54	4	4	2
510	20.1	5228	1175	2614	588	1568	353	3.6	2.43	2.3	1.58	2.6	1.71	4	4	2
561	22.1	5750	1293	2875	646	1725	388	4.0	2.68	2.6	1.73	2.8	1.89	4	4	2
612	24.1	6273	1410	3137	705	1882	423	4.3	2.92	2.8	1.89	3.1	2.06	5	5	3
663	26.1	6796	1528	3398	764	2039	458	4.7	3.16	3.0	2.05	3.3	2.23	5	5	3
714	28.1	7319	1645	3659	823	2196	494	5.1	3.41	3.3	2.21	3.6	2.40	5	5	3

Additional standard belt widths are available in steps of 50.9 mm (2.00 in). Additional non-standard belt widths are available in steps of 12.7 mm (0.50 in).

1987	78.2	20367	4578	10183	2289	6110	1374	14.1	9.48	9.1	6.14	9.9	6.68	14	14	7
------	------	-------	------	-------	------	------	------	------	------	-----	------	-----	------	----	----	---

Additional standard belt widths are available in steps of 50.9 mm (2.00 in). Additional non-standard belt widths are available in steps of 12.7 mm (0.50 in).

2955	116.3	30289	6809	15144	3404	9087	2043	21.0	14.10	13.6	9.14	14.8	9.93	20	20	10
------	-------	-------	------	-------	------	------	------	------	-------	------	------	------	------	----	----	----

General belt tolerance is +0/-0.4% at 23°C/73°F and 50% RH. For exact belt width contact Customer Service. Non standard belt width on request.

\*Max. Load per Drive Sprocket. Belt material: POM-D 1000 N (225 lbf). PP 600 N (135 lbf). PE 600 N (135 lbf).

\*\*Max. Spacing between wear strips. Carry: 152.0 mm (6.00 in); Return: 304.0 mm (12.00 in).

= Single Link



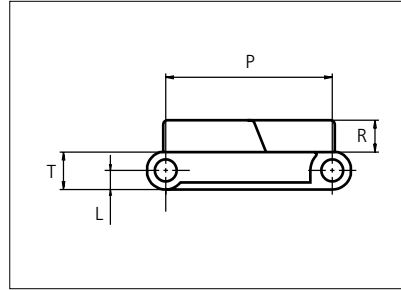
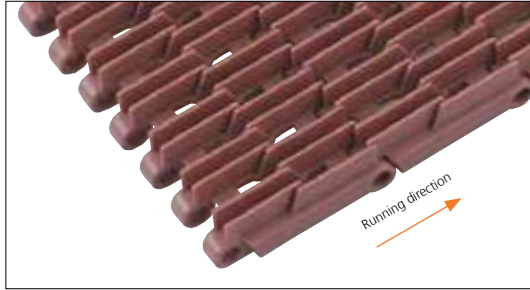
NON STANDARD

STRAIGHT RUNNING

PITCH 38.1 MM/1.50 IN

# Plastic Modular Belt

Serie **uni Light EP** Type **33% Rib**



Straight running belt  
 Nominal pitch: 38.1 mm (1.50 in)  
 Surface type: Rib Top  
 Surface opening: 33%  
 Backflex radius: 150.0 mm (5.9 in)  
 Pin diameter: 5.0 mm (0.20 in)

<b>Recommended Belt material &amp; color</b>	POM-LF <b>BR</b>	<b>mm</b>	<b>in</b>		<b>mm</b>	<b>in</b>	
<b>Recommended Pin and lock material &amp; color</b>	PP <b>W</b>	<b>P (Nominal)</b>	38.1	1.50	<b>T</b>	8.5	0.33
		<b>L</b>	4.3	0.17	<b>R</b>	7.3	0.29

Non standard material and color: See uni Material and Color Overview.

Alternative materials: Belt: PP and PE Pin: PP **W** PA6.6 **B** PE **W** PBT **LG** and SS304 PP **W** **B** **G** Lockpin: PBT **LG** PA6.6 **N** **D**

Belt width		Permissible tensile force (Belt/pin material)						Belt weight (Belt/pin material)						*Min. No. drive sprocket per shaft	Number of wear strips (Min. No.)	
		POM-D/PP		PP/PP		PE/PP		POM-D/PP		PP/PP		PE/PP			**Carry (pcs)	**Return (pcs)
mm	in	N	lbf	N	lbf	N	lbf	kg/m	lb/ft	kg/m	lb/ft	kg/m	lb/ft			
102	4.0	1046	235	523	118	314	71	0.6	0.40	0.4	0.27	0.4	0.29	2	2	2
153	6.0	1568	353	784	176	470	106	0.9	0.60	0.6	0.41	0.7	0.44	2	2	2
204	8.0	2091	470	1046	235	627	141	1.2	0.80	0.8	0.55	0.9	0.59	2	2	2
255	10.0	2614	588	1307	294	784	176	1.5	0.99	1.0	0.69	1.1	0.74	2	2	2
306	12.0	3137	705	1568	353	941	212	1.8	1.19	1.2	0.82	1.3	0.88	3	3	2
357	14.1	3659	823	1830	411	1098	247	2.1	1.39	1.4	0.96	1.5	1.03	3	3	2
408	16.1	4182	940	2091	470	1255	282	2.4	1.59	1.6	1.10	1.8	1.18	3	3	2
459	18.1	4705	1058	2352	529	1411	317	2.7	1.79	1.8	1.23	2.0	1.33	4	4	2
510	20.1	5228	1175	2614	588	1568	353	3.0	1.99	2.0	1.37	2.2	1.47	4	4	2
561	22.1	5750	1293	2875	646	1725	388	3.3	2.19	2.2	1.51	2.4	1.62	4	4	2
612	24.1	6273	1410	3137	705	1882	423	3.5	2.39	2.4	1.65	2.6	1.77	5	5	3
663	26.1	6796	1528	3398	764	2039	458	3.8	2.58	2.7	1.78	2.9	1.92	5	5	3
714	28.1	7319	1645	3659	823	2196	494	4.1	2.78	2.9	1.92	3.1	2.06	5	5	3

Additional standard belt widths are available in steps of 50.9 mm (2.00 in). Additional non-standard belt widths are available in steps of 12.7 mm (0.50 in).

1987	78.2	20367	4578	10183	2289	6110	1374	11.5	7.75	7.9	5.34	8.5	5.74	14	14	7
------	------	-------	------	-------	------	------	------	------	------	-----	------	-----	------	----	----	---

Additional standard belt widths are available in steps of 50.9 mm (2.00 in). Additional non-standard belt widths are available in steps of 12.7 mm (0.50 in).

2955	116.3	30289	6809	15144	3404	9087	2043	17.1	11.52	11.8	7.94	12.7	8.54	20	20	10
------	-------	-------	------	-------	------	------	------	------	-------	------	------	------	------	----	----	----

General belt tolerance is +/-0.4% at 23°C/73°F and 50% RH. For exact belt width contact Customer Service. Non standard belt width on request.

\*Max. Load per Drive Sprocket. Belt material: POM-D 1000 N (225 lbf). PP 600 N (135 lbf). PE 600 N (135 lbf).

\*\*Max. Spacing between wear strips. Carry: 152.0 mm (6.00 in); Return: 304.0 mm (12.00 in).

= Single Link



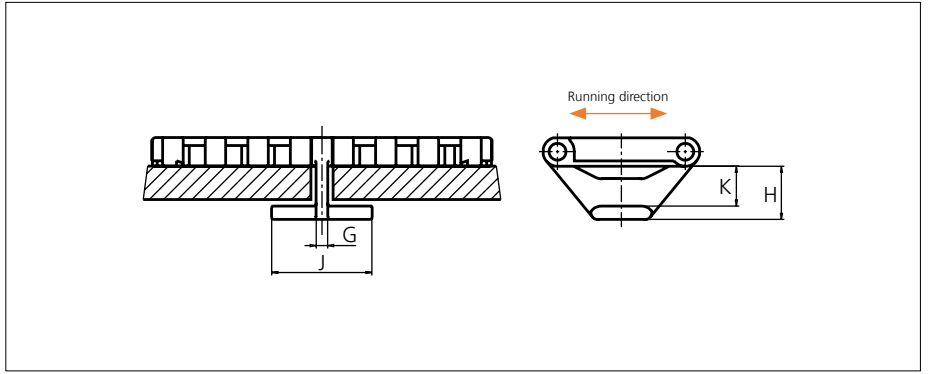
NON STANDARD

STRAIGHT RUNNING

PITCH 38.1 MM/1.50 IN

## Accessories

### Tab

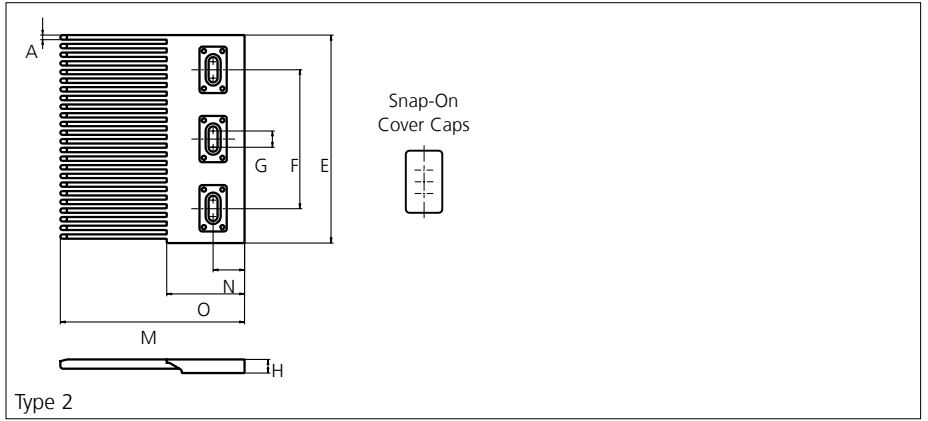
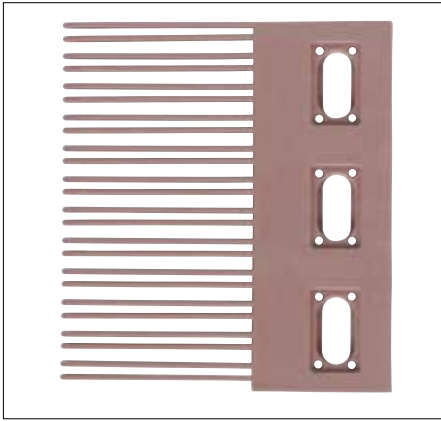


Type	Recommended Material & color	G		J		K		H	
		mm	in	mm	in	mm	in	mm	in
Bottom Hold Down	POM-D	3.5	0.14	26.0	1.02	12.4	0.49	16.4	0.65

Other Non Standard material and color: See uni Material and Color Overview.

## Accessories

### Finger Plates



Type	Recommended Material & color	A		E		F		G		H		M		N		O	
		mm	in	mm	in	mm	in	mm	in	mm	in	mm	in	mm	in		
Single Sided	POM-LF	3.3	0.13	152.4	6.00	101.6	4.00	12.0	0.47	10.3	0.41	135.0	5.31	23.0	0.91	57.0	2.24

All uni-chains belt systems are available in a raised rib version that can be supplied with matching finger plates, also called combs.

The finger plates are supplied with cover caps which can be attached when the finger plate has been installed. The cover caps can be removed by using a screwdriver that can be inserted between the cover and finger plate.

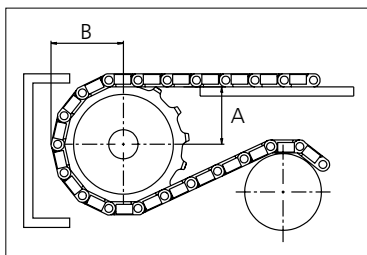
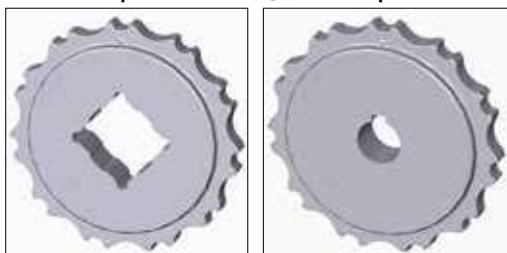
Non Standard material and color: See uni Material and Color Overview.

## Sprocket

No of teeth	Bore size						Overall diameter		Pitch-diameter		Hub-diameter		Dimension A		Dimension B		Single row/Two way	Molded	PA6 LG
	Pilot bore	in	1.00	1.18	1.25	1.50													
	mm	25.4	30.0	31.8	38.1	40.0	mm	in	mm	in	mm	in	mm	in	mm	in			
Z07			●	●	●			87.8	3.46	86.0	3.39	65.0	2.56	35.2	1.39	48.3	1.90	✓	✓
Z09			●	●	●	■	●	111.4	4.39	110.6	4.35	90.0	3.54	48.0	1.89	60.0	2.36	✓	✓
Z10			●	●	●	■	●	123.3	4.85	122.7	4.83	100.0	3.94	54.3	2.14	66.0	2.60	✓	✓
Z11			●	●	●	■	●	135.2	5.32	135.0	5.31	110.0	4.33	60.5	2.38	72.0	2.83	✓	✓
Z12				●	●	●	●	147.2	5.80	147.1	5.79	120.0	4.72	66.7	2.63	78.0	3.07	✓	✓
Z15				●	●	●	●	183.2	7.21	183.5	7.22	120.0	4.72	85.3	3.36	96.0	3.78	✓	✓

■ Molded sprocket

● Molded sprocket



Other sprocket sizes are available upon request.

Two-part sprocket are available upon request.

Other bore sizes are available upon request.

uni Retainer Rings: See uni Retainer Ring data sheet

Width of tooth = 11.8 mm (0.47 in)

Width of sprocket = 23.2 mm (0.91 in)

Max load per sprocket shown does not take bore size into account.

Please also ensure that sufficient size shaft is chosen for corresponding load.

For correct sprocket position: See uni Assembly Instructions for uni Light EP.

For more detailed sprocket information, contact Customer Service.

Non standard material and color: See uni Material and Color Overview.