

Paso de 25.4 mm (1.00 pulgadas)



uni QNB – fuerte y fiable

La banda uni QNB se ha desarrollado para obtener una resistencia, rigidez y un mínimo desgaste. La banda es única gracias a su fuerza y fiabilidad. Sus bordes achaflanados permiten una transferencia lateral fácil y eliminan puntos de estancamiento.

La banda uni QNB ha mejorado el rendimiento en las siguientes industrias/aplicaciones:

- Panadería, incluyendo la manipulación y aplicaciones en de bandejas y cajas en pendiente
- Cárnica y avícola, incluyendo líneas de empaquetado y transportadores inclinados de cajas

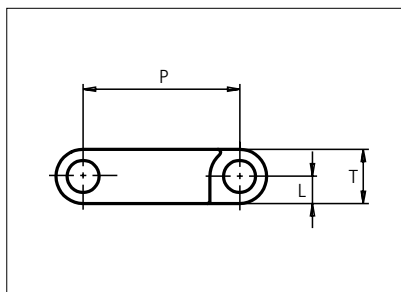
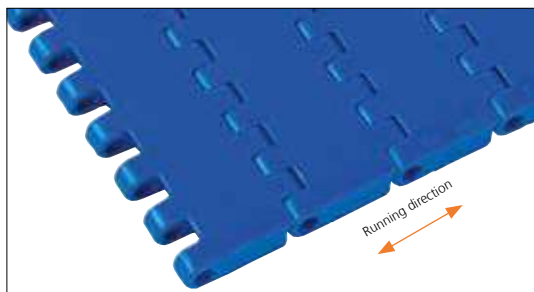
- Bebidas, incluyendo depaletizadoras, mesas de acumulación y transportadores inclinados de cajas
- Fabricación de latas, incluyendo paletizadoras, manipulado de masas y mesas de acumulación
- Cartón ondulado, incluyendo apilado, salida del cartón, carro de transferencia y almacenamiento WIP
- Neumáticos, incluyendo transportadores oscilantes, salida de extrusionado y aplicaciones de inspección
- Manipulación de materiales, incluyendo transportadores inclinados, paletizadoras y líneas de empaquetado

Características del producto y ventajas de funcionamiento:

- Banda bidireccional fuerte para transportadores largos
- Superficie rugosa antideslizante que mejora la seguridad de los operarios
- Sistema de cierre único (lockpin) para un mantenimiento fácil
- Engranaje único de las ruedas, que reduce el efecto pulsante y aumenta la capacidad de carga
- Superficie única de goma, que elimina el desgaste y mejora las propiedades de fricción en aplicaciones inclinadas

Plastic Modular Belt

Series **uni QNB** Type **C**



Straight running belt
 Nominal pitch: 25.4 mm (1.00 in)
 Surface type: Flat
 Surface opening: Closed
 Backflex radius: 40.0 mm (1.57 in)
 Pin diameter: 5.0 mm (0.19 in)

Belt material & color	POM-SLF B	PP B	PP W	mm	in	mm	in		
				P (Nominal)	25.4	1.00	L	4.4	0.17
Pin material & color	PP B		PP W	T	8.8	0.35	-	-	-

Non standard material and color: See uni Material and Color Overview.

Alternative pin and lock materials: Solid Lockpin: PA6.6 **D** Pin: PP **W** PA6.6 **B** PE **W** PBT **LG** and SS304 Endlock: PA6.6 **D**
 Lockpin: PBT **LG** PA6.6 **D** PP **B** **W**

Belt width		Permissible tensile force (Belt/pin material)				Belt weight (Belt/pin material)				*Min. No. drive sprocket per shaft	Number of wear strips (Min. No.)	
		POM-SLF/PP		PP/PP		POM-SLF/PP		PP/PP			**Carry (pcs)	**Return (pcs)
mm	in	N	lbf	N	lbf	kg/m	lb/ft	kg/m	lb/ft			
39	1.5	1365	307	780	175	0.3	0.22	0.2	0.14	1	1	1
51	2.0	1768	397	1010	227	0.4	0.29	0.3	0.18	2	1	1
77	3.0	2695	606	1540	346	0.6	0.43	0.4	0.28	2	2	2
153	6.0	5355	1204	3060	688	1.3	0.86	0.8	0.56	2	2	2
229	9.0	8015	1802	4580	1030	1.9	1.29	1.2	0.83	2	2	2
305	12.0	10675	2400	6100	1371	2.6	1.72	1.6	1.11	3	3	2
382	15.0	13370	3006	7640	1717	3.2	2.16	2.1	1.39	3	3	2
458	18.0	16030	3604	9160	2059	3.8	2.59	2.5	1.66	4	4	2
534	21.0	18690	4202	10680	2401	4.5	3.01	2.9	1.94	4	4	2
610	24.0	21350	4799	12200	2743	5.1	3.44	3.3	2.21	5	5	3
687	27.0	24045	5405	13740	3089	5.8	3.88	3.7	2.49	5	5	3
763	30.0	26705	6003	15260	3430	6.4	4.31	4.1	2.77	6	6	3

Additional standard belt widths are available in steps of 76.3 mm (3.00 in). Additional non-standard belt widths are available in steps of 25.4 mm (1.00 in).

1983	78.1	69405	15602	39660	8916	16.7	11.19	10.7	7.20	14	14	7
------	------	-------	-------	-------	------	------	-------	------	------	----	----	---

Additional standard belt widths are available in steps of 76.3 mm (3.00 in). Additional non-standard belt widths are available in steps of 25.4 mm (1.00 in).

2974	117.1	104090	23399	59480	13371	25.0	16.79	16.1	10.79	20	20	10
------	-------	--------	-------	-------	-------	------	-------	------	-------	----	----	----

General belt tolerance is +0/-0.4% at 23°C/73°F and 50% RH. For exact belt width contact Customer Service. Non standard belt width on request.

*Max. Load per Drive Sprocket. Belt material: POM-SLF 2300 N (517 lbf), PP 1300 N (292 lbf).

**Max. Spacing between wear strips, Carry: 152.0 mm (6.00 in); Return: 304.0 mm (12.00 in).

= Single Link



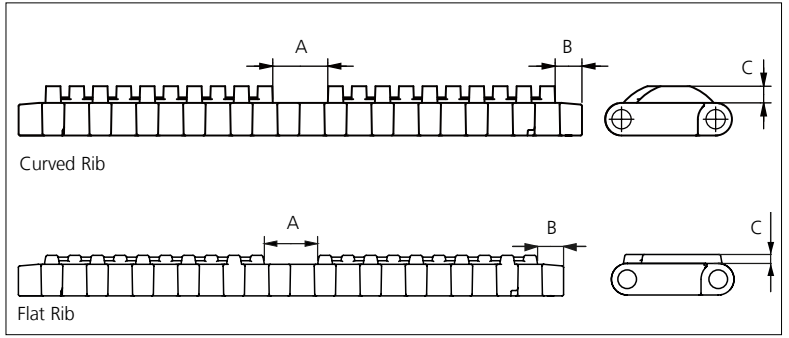
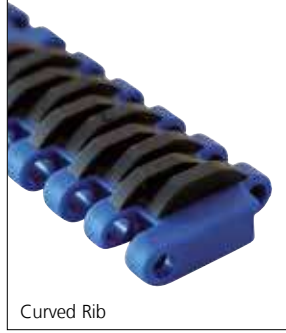
STANDARD

STRAIGHT RUNNING

PITCH 25.4 MM/1.00 IN

Accessories

Rubber Top

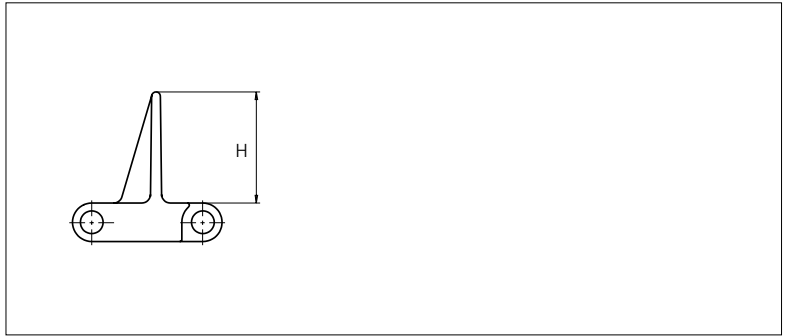
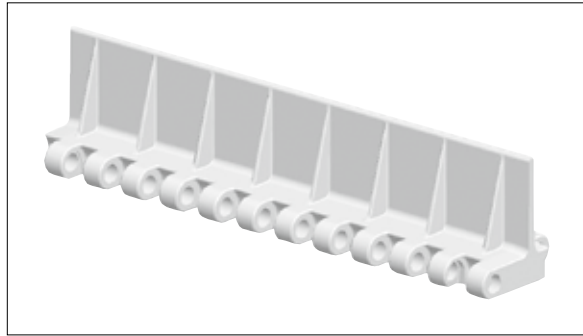


Type	Belt Material & color	Rubber Material & color	A		B		C		Link size	Width	
			mm	in	mm	in	mm	in		mm	in
Curved Rib	PP B	03 K	14.9	0.59	7.3	0.29	4.5	0.18	K300	75.8	2.98
Flat Rib			14.85	0.58	7.25	0.29	2.5	0.10	K300	75.8	2.98
									K600	152.0	5.98
									K600	152.0	5.98

Non Standard material and color: See uni Material and Color Overview.

Accessories

Flight

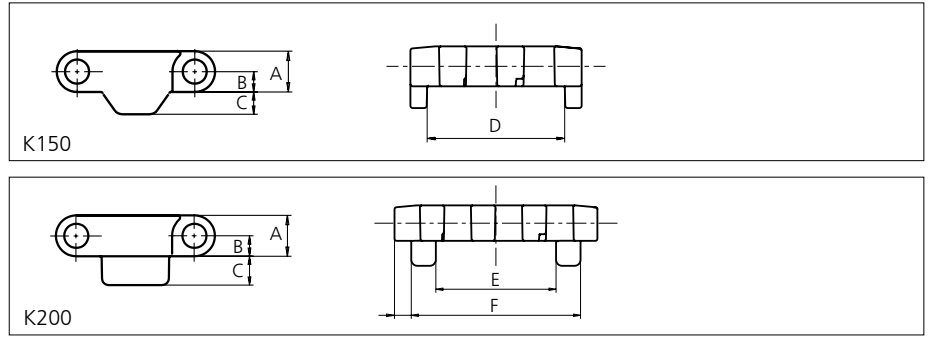
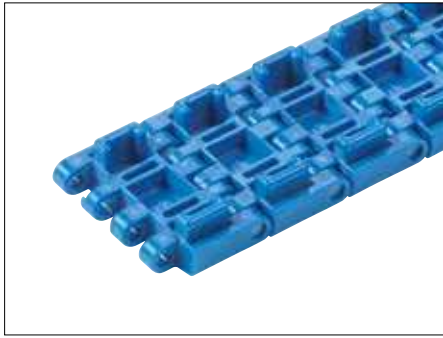


Type	Flight Material & color	H		Link size	Width		Indent	
		mm	in		mm	in	mm	in
Non Stick/Support Ribs	PP-I W B	25.4	1.00	K600	152.0	5.98	0.0	0.00
	POM-SLF B							

Non Standard material and color: See uni Material and Color Overview.

Accessories

NON STANDARD – Tab – Single Link Only

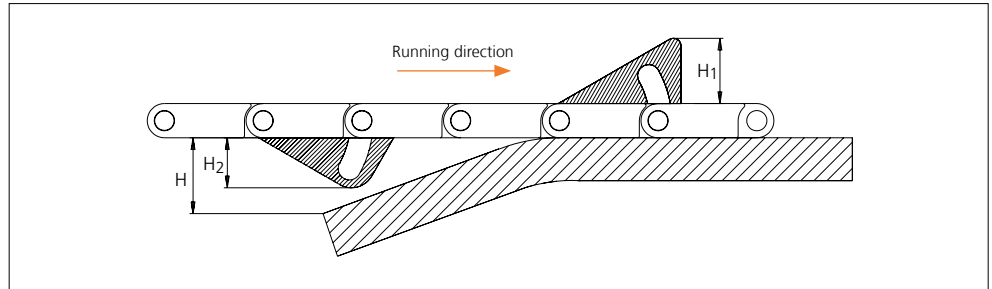
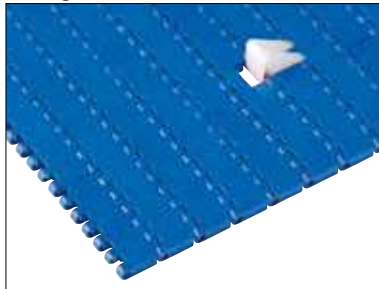


Type	Recommended link material & color	Recommended pin material & color	A		B		C		D		E		F		Link Size
			mm	in	mm	in	mm	in	mm	in	mm	in	mm	in	
Bottom Guide	POM-SLF B	PA6.6 D	8.8	0.35	4.4	0.17	4.8	0.19	30.3	1.19	29.9	1.18	42.1	1.66	K150
	PP B						6.2	0.24							K200

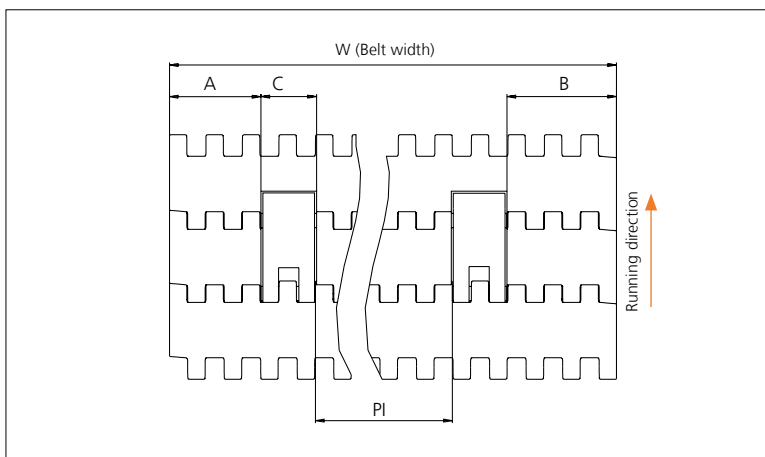
⚡ Solid Lockpin as default lock system. Alternative pin materials & color: PBT **LG**
 Non Standard material and color: See uni Material and Color Overview.

Accessories

AmFlight



Type	Material & color	H		H ¹		H ²	
		mm	in	mm	in	mm	in
Push	PE W	17.0	0.67	17.0	0.67	14.0	0.55

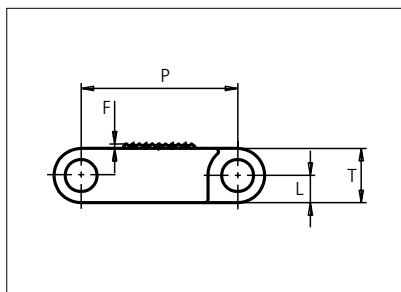


	mm	in
A min	32.4	1.28
B min	38.5	1.52
C	18.0	0.71
PI max	W - 106.9	W - 4.21
PI min	32.7	1.29

Increment: 12.7 mm (0.50 in)

Plastic Modular Belt

Series **uni QNB** Type **Rough**



Straight running belt
 Nominal pitch: 25.4 mm (1.00 in)
 Surface type: Rough Top
 Surface opening: Closed
 Backflex radius: 40.0 mm (1.57 in)
 Pin diameter: 5.0 mm (0.31 in)

Belt material & color	POM-SLF B		mm	in		mm	in
Pin material & color	PP B	P (Nominal)	25.4	1.00	L	4.4	0.17
		F	0.8	0.03	T	8.8	0.35

Non standard material and color: See uni Material and Color Overview.

Alternative pin and lock materials: Solid Lockpin: PA6.6 **D** Pin: PP **W** PA6.6 **B** PE **W** PBT **LG** and SS304 Endlock: PA6.6 **D**
 Lockpin: PBT **LG** PA6.6 **D** PP **B** **W**

Belt width		Permissible tensile force (Belt/pin material)		Belt weight (Belt/pin material)		*Min. No. drive sprocket per shaft	Number of wear strips (Min. No.)	
		POM-SLF/PP		POM-SLF/PP			**Carry (pcs)	**Return (pcs)
mm	in	N	lbf	kg/m	lb/ft			
77	3.0	2695	606	0.6	0.43	2	2	2
153	6.0	5355	1204	1.3	0.86	2	2	2
229	9.0	8015	1802	1.9	1.29	2	2	2
305	12.0	10675	2400	2.6	1.72	3	3	2
382	15.0	13370	3006	3.2	2.16	3	3	2
458	18.0	16030	3604	3.8	2.59	4	4	2
534	21.0	18690	4202	4.5	3.01	4	4	2
610	24.0	21350	4799	5.1	3.44	5	5	3
687	27.0	24045	5405	5.8	3.88	5	5	3
763	30.0	26705	6003	6.4	4.31	6	6	3
839	33.0	29365	6601	7.0	4.74	6	6	3
915	36.0	32025	7199	7.7	5.17	7	7	4
992	39.1	34720	7805	8.3	5.60	7	7	4

Additional standard belt widths are available in steps of 76.3 mm (3.00 in). Additional non-standard belt widths are available in steps of 25.4 mm (1.00 in).

1983	78.1	69405	15602	16.7	11.19	14	14	7
------	------	-------	-------	------	-------	----	----	---

Additional standard belt widths are available in steps of 76.3 mm (3.00 in). Additional non-standard belt widths are available in steps of 25.4 mm (1.00 in).

2974	117.1	104090	23399	25.0	16.79	20	20	10
------	-------	--------	-------	------	-------	----	----	----

General belt tolerance is +0/-0.4% at 23°C/73°F and 50% RH. For exact belt width contact Customer Service. Non standard belt width on request.

*Max. Load per Drive Sprocket. Belt material: POM-SLF 2300 N (517 lbf), PP 1300 N (292 lbf).
 **Max. Spacing between wear strips, Carry: 152.0 mm (6.00 in); Return: 304.0 mm (12.00 in).

= Single Link



STANDARD

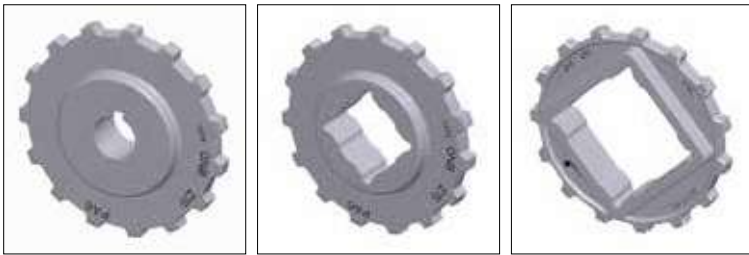
STRAIGHT RUNNING

PITCH 25.4 MM/1.00 IN

Sprocket

No. of teeth	Bore size									Overall diameter		Pitch diameter		Hub diameter		Dimension A		Dimension B		Single row/Two way	PAG LG
	Pilot bore	1.00		1.18		1.25		1.50													
	mm	in	25.4	30.0	31.8	38.1	40.0	60.0	63.5	mm	in	mm	in	mm	in	mm	in	mm	in	Single row/Two way	Moulded
Z10	✓		●	●	●	■	●			80.3	3.16	82.2	3.24	65.0	2.56	34.7	1.36	45.5	1.79	✓	✓
Z12	✓		●	●	●	■	■			96.8	3.81	98.1	3.86	70.0	2.76	43.0	1.69	53.5	2.11	✓	✓
Z15	✓			●	●	■	■			121.5	4.78	122.2	4.81	70.0 100.0 104.0	2.76 3.94 4.09	55.4	2.18	65.5	2.58	✓	✓
Z18	✓			●	●	■	■			146.0	5.75	146.3	5.76	70.0 104.0 120.0	2.76 4.09 4.72	67.6	2.66	77.5	3.05	✓	✓
Z19	✓			●	●	■	■			154.2	6.07	154.3	6.07	70.0 120.0	2.76 4.72	71.7	2.82	81.6	3.21	✓	✓

● Moulded sprocket ■ Moulded sprocket ■ Moulded sprocket

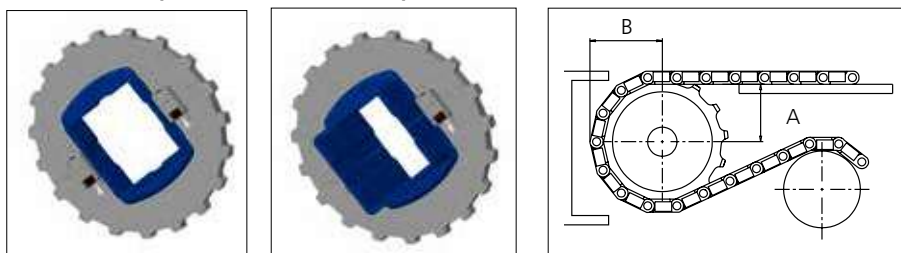


Other sprocket sizes are available upon request.
 Max load per sprocket shown does not take bore size into account.
 Please also ensure that sufficient size shaft is chosen for corresponding load.
 Other bore sizes are available upon request.
 uni Retainer Rings: See uni Retainer Ring data sheet.
 Width of tooth = 10.0 mm (0.39 in)
 Width of OnePart sprocket = 25.0 mm (0.98 in)

uni UltraFit Two-Part Sprocket

No. of teeth						Overall diameter		Pitch diameter		Hub/adapter diameter		Hub/adapter width		Dimension A		Dimension B		Single row/Two way	PAG LG	Moulded	Adapter Moulded
	in	1.50	1.57	2.36	2.50																
	mm	38.1	40.0	60.0	63.5	mm	in	mm	in	mm	in	mm	in	mm	in	mm	in	Single row/Two way	Moulded	Adapter Moulded	
Z12		■	■			96.8	3.81	98.2	3.87	83.0	3.27	25.0 76.0	0.98 2.99	43	1.69	53.5	2.11	✓	✓	✓	
Z13		■	■			104.8	4.13	106.2	4.18	83.0	3.27	25.0 76.0	0.98 2.99	47.1	1.86	57.1	2.25	✓	✓	✓	
Z15		■	■	■	■	121.5	4.78	122.5	4.82	106.0	4.14	25.0 76.0	0.98 2.99	55.4	2.18	65.5	2.58	✓	✓	✓	
Z16		■	■	■	■	129.7	5.11	130.2	5.13	106.0	4.14	25.0 76.0	0.98 2.99	59.5	2.35	69.5	2.74	✓	✓	✓	
Z18		■	■	■	■	146.1	5.75	146.3	5.76	106.0	4.14	25.0 76.0	0.98 2.99	67.6	2.66	77.5	3.05	✓	✓	✓	
Z19		■	■	■	■	154.2	6.07	154.3	6.07	106.0	4.14	25.0 76.0	0.98 2.99	71.7	2.82	81.6	3.21	✓	✓	✓	

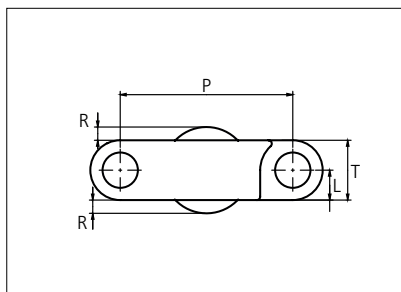
■ Moulded uni UltraFit TwoPart Sprocket (Narrow adapter) ■ Moulded uni UltraFit TwoPart Sprocket (Wide adapter)



For correct sprocket position:
 See uni Assembly Instructions for uni QNB.
 For more detailed sprocket information contact Customer Service.

Plastic Modular Belt

Series **uni QNB** Type **Ball**



Straight running belt
 Nominal pitch: 25.4 mm (1.00 in)
 Surface type: Ball
 Surface opening: Closed
 Backflex radius: 25.0 mm (0.98 in)
 Pin diameter: 5.0 mm (0.20 in)

Belt material & color	POM-SLF B		mm	in		mm	in
Ball material & color	PA6.6 B	P (Nominal)	25.4	1.00	R	1.95	0.08
Pin material & color	PP B	L	4.4	0.17	T	8.8	0.35

Non standard material and color: See uni Material and Color Overview.

Belt width		Permissible tensile force (Belt/pin material)		Belt weight (Belt/pin material)		*Min No drive sprocket per shaft	Number of wear strips (min no)	
		POM-SLF/PP		POM-SLF/PP			**Carry (pcs)	**Return (pcs)
mm	in	N	lbf	Kg/m	lb/ft			
76	3.0	1710	384	0.7	0.48	2	2	2
153	6.0	3443	774	1.4	0.96	2	2	2
229	9.0	5153	1158	2.1	1.43	2	2	2
305	12.0	6863	1543	2.8	1.91	3	3	2
381	15.0	8573	1927	3.5	2.38	3	3	2
457	18.0	10283	2312	4.3	2.86	4	4	2
533	21.0	11993	2696	5.0	3.33	4	4	2
609	24.0	13703	3080	5.7	3.81	5	5	3
685	27.0	15413	3465	6.4	4.28	5	5	3
761	30.0	17123	3849	7.1	4.76	6	6	3
838	33.0	18855	4239	7.8	5.24	6	6	3
914	36.0	20565	4623	8.5	5.71	7	7	4
990	39.0	22275	5007	9.2	6.19	7	7	4
1066	42.0	23985	5392	9.9	6.66	8	8	4

Additional standard belt widths are available in steps of 76.3 mm (3.00 in).

1979	77.9	44528	10010	18.4	12.37	14	14	7
------	------	-------	-------	------	-------	----	----	---

Additional standard belt widths are available in steps of 76.3 mm (3.00 in).

2968	116.9	66780	15012	27.6	18.55	20	20	10
------	-------	-------	-------	------	-------	----	----	----

General belt tolerance is +0/-0.4% at 23°C/73°F and 50% RH. For exact belt width contact Customer Service.

*Max. Load per Drive Sprocket. Belt material: POM-SLF 1840 N (414 lbf).

**Max. Spacing between wear strips, Carry: 152.0 mm (6.00 in); Return: 304.0 mm (12.00 in).

□ = Single Link




STANDARD

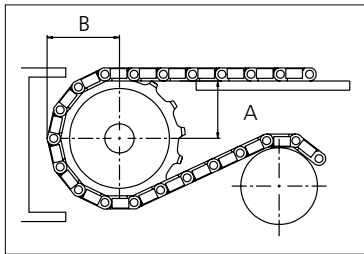
STRAIGHT RUNNING

PITCH 25.4 MM/1.00 IN

Sprocket

No. of teeth	Bore size						Overall diameter		Pitch diameter		Hub diameter		Dimension A		Dimension B		Single row/Two way	Machined	
	Pilot bore	1.50	1.57	2.36	2.50														
	in	mm	mm	mm	mm	mm	in	mm	in	mm	in	mm	in	mm	in				
Z15	✓	■	■	■	■	121.5	4.78	122.5	4.82	100.0	3.93	55.4	2.18	66.1	2.60	✓	✓		
Z18	✓	■	■	■	■	146.1	5.75	146.3	5.76	120.0	4.72	67.6	2.66	78.4	3.08	✓	✓		
Z19	✓	■	■	■	■	154.2	6.07	154.3	6.07	125.0	4.92	71.7	2.82	82.5	3.24	✓	✓		

■ Machined sprocket



Other sprocket sizes are available upon request.
 Two-part sprockets are available upon request.
 Other bore sizes are available upon request.
 uni Retainer Rings: See uni Retainer Ring data sheet.
 Width of tooth = 8.0 mm (0.31 in)
 Width of sprocket = 25.0 mm (0.98 in)

Max load per sprocket shown does not take bore size into account.
 Please also ensure that sufficient size shaft is chosen for corresponding load.

For correct sprocket position: See uni Assembly Instructions for uni QNB Ball.
 For more detailed sprocket information, contact Customer Service.

Non standard material and color: See uni Material and Color Overview.