

Paso de 63.5 mm (2.50 pulgadas)



uni X-MPB – La banda higiénica más fuerte para la industria alimentaria

La banda uni X-MPB forma parte de la serie higiénica uni MPB, usada principalmente en diversas aplicaciones alimentarias. Esta banda de tramo recto y paso de 2.5 pulgadas tiene el esfuerzo de tracción y la resistencia a impactos más altas de la gama de productos de unichains de bandas para la industria alimentaria.

La banda uni X-MPB ha demostrado ser la mejor en las siguientes industrias/aplicaciones:

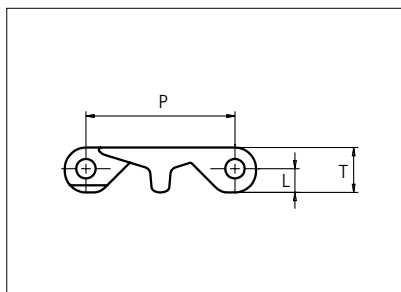
- Cárnica (ternera y cerdo), incluyendo líneas de deshuesado, de corte de grasa, líneas de corte, transporte de desechos, desviscerado y transporte inclinado
- Avícola, incluyendo transporte de jaulas, líneas de deshuesado, corte de grasa, transporte de desechos y transporte inclinado
- Frutas y verduras, incluyendo elevadores y mesas de inspección

Características del producto y ventajas de funcionamiento:

- Fácil de limpiar con una reducción de tiempos muertos dedicados a limpieza
- El sistema de cierre único (lockpin) permite un mantenimiento más sencillo y rápido
- El engranaje único de las ruedas permite una mayor carga de producto y transportadores más largos
- Materiales autorizados por la FDA y diseño autorizado por la USDA
- Soportes fuertes y gruesos que permiten más carga sin roturas
- Resistencia a impactos para soportar la caída de objetos pesados sobre la banda

Plastic Modular Belt

Series **uni X-MPB** Type **C**



Straight running belt
 Nominal pitch: 63.5 mm (2.50 in)
 Surface type: Flat
 Surface opening: Closed
 Backflex radius: 75.0 mm (2.95 in)
 Pin diameter: 8.0 mm (0.31 in)

Belt material & color	POM-DI W	PE-I N	mm	in	mm	in
	Pin and lock material & color		P (Nominal)	63.5	2.50	T
		PA6.6 N	L	10.1	0.40	- / - / -

Non standard material and color: See uni Material and Color Overview.

Alternative pin and lock materials: Lockpin: PP **W** PBT **LG**

Belt width		Permissible tensile force (Belt/pin material)				Belt weight (Belt/pin material)				*Min. No. drive sprocket per shaft	Number of wear strips (Min. No.)	
		POM-DI/PA6.6		PE-I/PA6.6		POM-DI/PA6.6		PE-I/PA6.6			**Carry (pcs)	**Return (pcs)
mm	in	N	lbf	N	lbf	kg/m	lb/ft	kg/m	lb/ft			
76	3.0	2280	513	760	171	1.1	0.75	0.8	0.51	2	2	2
152	6.0	4558	1025	1519	342	2.2	1.49	1.5	1.02	2	2	2
227	9.0	6822	1534	2274	511	3.3	2.23	2.3	1.53	2	2	2
303	11.9	9087	2043	3029	681	4.4	2.97	3.0	2.04	3	3	2
378	14.9	11352	2552	3784	851	5.5	3.71	3.8	2.54	3	3	2
454	17.9	13616	3061	4539	1020	6.6	4.45	4.5	3.05	4	4	2
529	20.8	15881	3570	5294	1190	7.7	5.19	5.3	3.56	4	4	2
605	23.8	18146	4079	6049	1360	8.8	5.93	6.0	4.06	5	5	3
680	26.8	20410	4588	6803	1529	9.9	6.68	6.8	4.57	5	5	3
756	29.8	22675	5097	7558	1699	11.0	7.42	7.6	5.08	6	6	3
831	32.7	24940	5606	8313	1869	12.1	8.16	8.3	5.59	6	6	3
907	35.7	27204	6116	9068	2039	13.2	8.90	9.1	6.09	7	7	4
982	38.7	29469	6625	9823	2208	14.3	9.64	9.8	6.60	7	7	4

Additional standard belt widths are available in steps of 75.5 mm (2.97 in). Additional non-standard belt widths are available in steps of 25.2 mm (0.99 in).

1963	77.3	58890	13238	19630	4413	28.7	19.26	19.6	13.19	14	14	7
------	------	-------	-------	-------	------	------	-------	------	-------	----	----	---

Additional standard belt widths are available in steps of 75.5 mm (2.97 in). Additional non-standard belt widths are available in steps of 25.2 mm (0.99 in).

2945	115.9	88350	19861	29450	6620	43.0	28.90	29.5	19.79	20	20	10
------	-------	-------	-------	-------	------	------	-------	------	-------	----	----	----

General belt tolerance is +0/-0.4% at 23°C/73°F and 50% RH. For exact belt width contact Customer Service. Non standard belt width on request.

*Max. Load per Drive Sprocket. Belt material: POM-DI 4000 N (899 lbf), PE-I 3000 N (674 lbf).

**Max. Spacing between wear strips, Carry: 152.0 mm (6.00 in); Return: 304.0 mm (12.00 in).

= Single Link



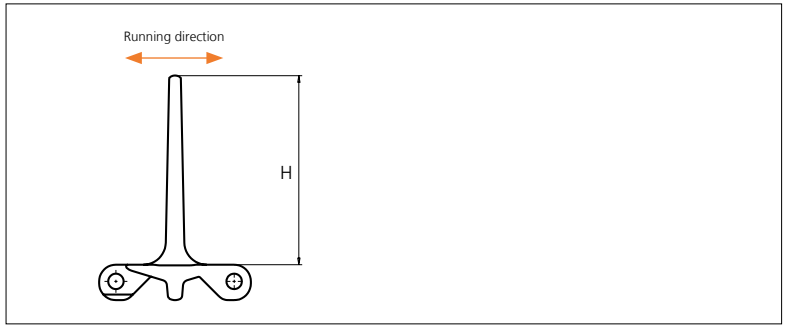
STANDARD

STRAIGHT RUNNING

PITCH 63.5 MM/2.50 IN

Accessories

Flight



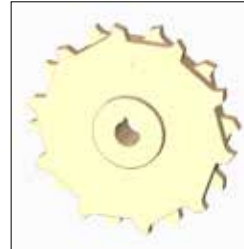
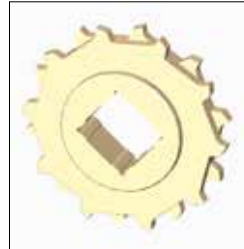
Type	Material & color	H		Link size	Width		Indent	
		mm	in		mm	in	mm	in
Flat	POM-DI W	101.6	4.00	K600	151.0	5.94	0.0	0.00

Non Standard material and color: See uni Material and Color Overview.

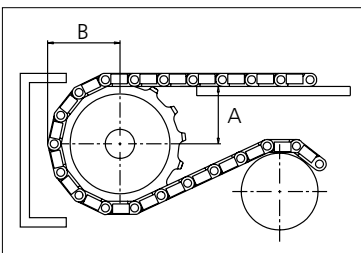
Sprocket

No. of teeth	Bore size						Overall diameter		Pitch diameter		Hub diameter		Dimension A		Dimension B		Double row/Two way	Molded	Machined	
	Pilot Bore	mm	in	1.18	1.25	1.50														1.57
Z06	✓	30.0	1.18	●	31.8	1.25	●	38.1	1.50	●	40.0	1.57	●	63.5	2.50					
Z08	✓																			
Z10	✓																			
Z13	✓																			

■ Molded sprocket
 ● Machined sprocket
 ■ Molded sprocket
 ● Machined sprocket



Non standard material and color: See uni Material and Color Overview.



Other sprocket sizes are available upon request.
 Two-part sprocket are available upon request.
 Other bore sizes are available upon request.
 uni Retainer Rings: See uni Retainer Ring data sheet.
 Width of tooth = 12.0 mm (0.47 in)
 Width of sprocket = 42.3 mm (1.67 in)

Max load per sprocket shown does not take bore size into account.
 Please also ensure that sufficient size shaft is chosen for corresponding load.

For correct sprocket position: See uni Assembly Instructions for uni X-MPB.
 For more detailed sprocket information, contact Customer Service.