

**Paso de 38.1 mm (1.50 pulgadas)**



**uni SSB – una banda fuerte con una resistencia sólida al desgaste**

La banda uni SSB de paso 1.5 pulgadas se creó para aplicaciones pesadas, como mesas de acumulación y empaquetadoras. La banda uni SSB puede combinarse con cadenas uni SSB en tramos múltiples de separadores para incrementar la velocidad de los transportadores y la salida del producto.

**La banda uni SSB ha mejorado el rendimiento en las siguientes industrias/aplicaciones:**

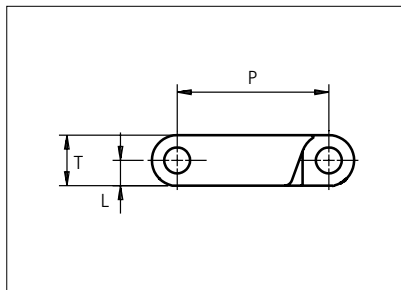
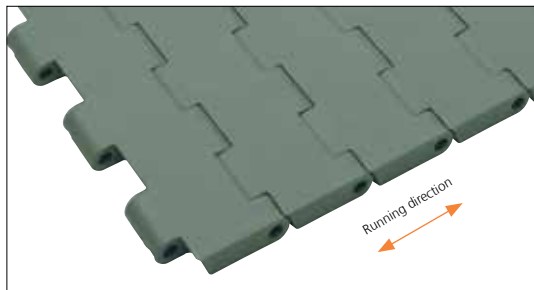
- Fruta y verdura, incluyendo líneas de llenado, enlatado, mesas de acumulación y aplicaciones inclinadas
- Panadería y aperitivos, incluyendo líneas de enfriamiento, manipulación de bandejas y entrada/salida del horno
- Bebidas, incluyendo transporte de cajas, líneas de extracción, separadores, mesas de acumulación y aplicaciones inclinadas
- Fabricación de latas, incluyendo manipulación masiva, transportadores de transferencia, mesas de acumulación y alimentación de paletizadoras
- Manipulación de material

**Características del producto y ventajas de funcionamiento:**

- El diseño amplio y cerrado incrementa la estabilidad del producto y reduce el desgaste de los pasadores
- Sus bordes achaflanados permiten una transferencia lateral estable
- Sistema de cierre único, sin riesgo de que salgan o se pierdan los pasadores
- Área abierta única para transportadores de enfriamiento o aplicaciones de drenaje inclinadas

# Plastic Modular Belt

Series **uni SSB** Type **C**



Straight running belt  
 Nominal pitch: 38.1 mm (1.50 in)  
 Surface type: Flat  
 Surface opening: Closed  
 Backflex radius: 45.0 mm (1.8 in)  
 Pin diameter: 6.4 mm (0.25 in)

<b>Belt material &amp; color</b>	POM-LF <b>BR</b>	PP <b>G</b>	mm	in	mm	in		
<b>Pin and lock material &amp; color</b>	PBT-GR <b>N</b>	PP <b>B</b>	<b>P (Nominal)</b>	38.1	1.50	<b>T</b>	12.7w	0.50
			<b>L</b>	6.4	0.25	-	-	-

Non standard material and color: See uni Material and Color Overview.

Alternative pin and lock materials: Pin: PP **W** PA66 **N** SS304

Belt width		Permissible tensile force (Belt/pin material)				Belt weight (Belt/pin material)				*Min. No. drive sprocket per shaft	Number of wear strips (Min. No.)	
		POM-LF/PBT-GR		PP/PBT-GR		POM-LF/PBT-GR		PP/PBT-GR			**Carry (pcs)	**Return (pcs)
mm	in	N	lbf	N	lbf	kg/m	lb/ft	kg/m	lb/ft			
83	3.3	2988	672	1079	243	0.9	0.63	0.6	0.41	2	2	2
115	4.5	4140	931	1495	336	1.3	0.87	0.9	0.57	2	2	2
153	6.0	5513	1239	1991	448	1.7	1.16	1.1	0.76	2	2	2
191	7.5	6876	1546	2483	558	2.2	1.45	1.4	0.95	2	2	2
229	9.0	8244	1853	2977	669	2.6	1.74	1.7	1.14	2	2	2
305	12.0	10980	2468	3965	891	3.4	2.32	2.3	1.52	3	3	2
381	15.0	13716	3083	4953	1113	4.3	2.89	2.8	1.89	3	3	2
457	18.0	16452	3698	5941	1336	5.2	3.47	3.4	2.27	4	4	2
533	21.0	19188	4313	6929	1558	6.0	4.05	3.9	2.65	4	4	2
609	24.0	21924	4929	7917	1780	6.9	4.62	4.5	3.03	5	5	3
685	27.0	24660	5544	8905	2002	7.7	5.20	5.1	3.41	5	5	3
761	30.0	27396	6159	9893	2224	8.6	5.78	5.6	3.78	6	6	3

Additional standard belt widths are available in steps of 76.1 mm (3.00 in). Additional non-standard belt widths are available in steps of 25.4 mm (1.00 in).

1979	77.9	71244	16016	25727	5783	22.4	15.03	14.6	9.84	14	14	7
------	------	-------	-------	-------	------	------	-------	------	------	----	----	---

Additional standard belt widths are available in steps of 76.1 mm (3.00 in). Additional non-standard belt widths are available in steps of 25.4 mm (1.00 in).

2968	116.9	106848	24019	38584	8674	33.5	22.54	22.0	14.76	20	20	10
------	-------	--------	-------	-------	------	------	-------	------	-------	----	----	----

For belt width above 2968 mm, please contact our customer service to review packaging and handling.

General belt tolerance is +0/-0.4% at 23°C/73°F and 50% RH. For exact belt width contact Customer Service. Non standard belt width on request.

\*Max. Load per Drive Sprocket. Belt material: POM-LF 2000 N (450 lbf), PP 1200 N (270 lbf).

\*\*Max. Spacing between wear strips, Carry: 152.0 mm (6.00 in); Return: 304.0 mm (12.00 in).

= Single Link



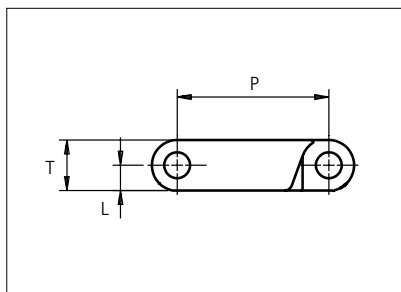
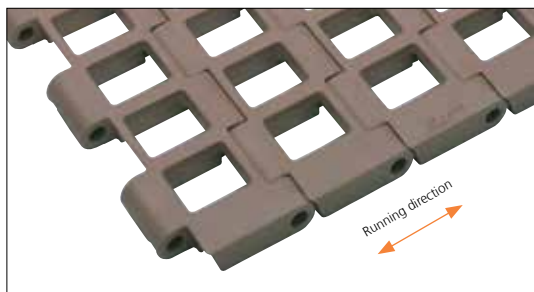
STANDARD

STRAIGHT RUNNING

PITCH 38.1 MM/1.50 IN

# Plastic Modular Belt

Series **uni SSB** Type **32%**



Straight running belt  
 Nominal pitch: 38.1 mm (1.50 in)  
 Surface type: Flat  
 Surface opening: 32%  
 Backflex radius: 45.0 mm (1.8 in)  
 Pin diameter: 6.4 mm (0.25 in)

Recommended belt material & color	POM-LF <b>BR</b>	PP <b>G</b>	mm	in	mm	in
	Recommended pin and lock material & color		P	T	L	
Pin: PBT-GR <b>N</b> PP <b>B</b>			38.1	1.50	12.7	0.50
			6.4	0.25	-	-

Non standard material and color: See uni Material and Color Overview.

Alternative pin and lock materials: Pin: PP **W** PA66 **N** SS304

Belt width		Permissible tensile force (Belt/pin material)				Belt weight (Belt/pin material)				*Min. No. drive sprocket per shaft	Number of wear strips (Min. No.)	
		POM-LF/PBT-GR		PP/PBT-GR		POM-LF/PBT-GR		PP/PBT-GR			**Carry (pcs)	**Return (pcs)
mm	in	N	lbf	N	lbf	kg/m	lb/ft	kg/m	lb/ft			
153	6.0	5508	1238	1989	447	1.7	1.16	1.1	0.76	2	2	2
229	9.0	8244	1853	2977	669	2.6	1.74	1.7	1.14	2	2	2
305	12.0	10980	2468	3965	891	3.4	2.32	2.3	1.52	3	3	2
381	15.0	13716	3083	4953	1113	4.3	2.89	2.8	1.89	3	3	2
457	18.0	16452	3698	5941	1336	5.2	3.47	3.4	2.27	4	4	2
533	21.0	19188	4313	6929	1558	6.0	4.05	3.9	2.65	4	4	2
609	24.0	21924	4929	7917	1780	6.9	4.62	4.5	3.03	5	5	3
685	27.0	24660	5544	8905	2002	7.7	5.20	5.1	3.41	5	5	3
761	30.0	27396	6159	9893	2224	8.6	5.78	5.6	3.78	6	6	3
838	33.0	30168	6782	10894	2449	9.5	6.36	6.2	4.17	6	6	3
914	36.0	32904	7397	11882	2671	10.3	6.94	6.8	4.55	7	7	4
990	39.0	35640	8012	12870	2893	11.2	7.52	7.3	4.92	7	7	4

Additional standard belt widths are available in steps of 76.1 mm (3.00 in). Additional non-standard belt widths are available in steps of 25.4 mm (1.00 in).

1979	77.9	71244	16016	25727	5783	22.4	15.03	14.6	9.84	14	14	7
------	------	-------	-------	-------	------	------	-------	------	------	----	----	---

Additional standard belt widths are available in steps of 76.1 mm (3.00 in). Additional non-standard belt widths are available in steps of 25.4 mm (1.00 in).

2968	116.9	106848	24019	38584	8674	33.5	22.54	22.0	14.76	20	20	10
------	-------	--------	-------	-------	------	------	-------	------	-------	----	----	----

General belt tolerance is +0/-0.4% at 23°C/73°F and 50% RH. For exact belt width contact Customer Service. Non standard belt width on request.

\*Max. Load per Drive Sprocket. Belt material: POM-LF 2000 N (450 lbf), PP 1200 N (270 lbf).

\*\*Max. Spacing between wear strips, Carry: 152 mm (6 in); Return: 304 mm (12 in).

= Single Link



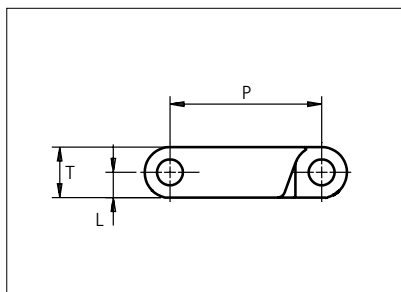
NON STANDARD

STRAIGHT RUNNING

PITCH 38.1 MM/1.50 IN

# Plastic Modular Belt

Series **uni SSB** Type **29%**



Straight running belt  
 Nominal pitch: 38.1 mm (1.50 in)  
 Surface type: Flat  
 Surface opening: 29%  
 Backflex radius: 45.0 mm (1.8 in)  
 Pin diameter: 6.4 mm (0.25 in)

Recommended belt material & color	POM-LF <b>BR</b>	PP <b>G</b>	mm	in	mm	in
	Recommended pin and lock material & color		P	T	L	
PBT-GR <b>N</b> PP <b>B</b>			38.1	1.50	12.7	0.50
			6.4	0.25	-	-

Non standard material and color: See uni Material and Color Overview.

Alternative pin and lock materials: Pin: PP **W** PA66 SS304

Belt width		Permissible tensile force (Belt/pin material)				Belt weight (Belt/pin material)				*Min. No. drive sprocket per shaft	Number of wear strips (Min. No.)	
		POM-LF/PBT-GR		PP/PBT-GR		POM-LF/PBT-GR		PP/PBT-GR			**Carry (pcs)	**Return (pcs)
mm	in	N	lbf	N	lbf	kg/m	lb/ft	kg/m	lb/ft			
153	6.0	5508	1238	1989	447	1.7	1.16	1.1	0.76	2	2	2
229	9.0	8244	1853	2977	669	2.6	1.74	1.7	1.14	2	2	2
305	12.0	10980	2468	3965	891	3.4	2.32	2.3	1.52	3	3	2
381	15.0	13716	3083	4953	1113	4.3	2.89	2.8	1.89	3	3	2
457	18.0	16452	3698	5941	1336	5.2	3.47	3.4	2.27	4	4	2
533	21.0	19188	4313	6929	1558	6.0	4.05	3.9	2.65	4	4	2
609	24.0	21924	4929	7917	1780	6.9	4.62	4.5	3.03	5	5	3
685	27.0	24660	5544	8905	2002	7.7	5.20	5.1	3.41	5	5	3
761	30.0	27396	6159	9893	2224	8.6	5.78	5.6	3.78	6	6	3
838	33.0	30168	6782	10894	2449	9.5	6.36	6.2	4.17	6	6	3
914	36.0	32904	7397	11882	2671	10.3	6.94	6.8	4.55	7	7	4
990	39.0	35640	8012	12870	2893	11.2	7.52	7.3	4.92	7	7	4

Additional standard belt widths are available in steps of 76.1 mm (3.00 in). Additional non-standard belt widths are available in steps of 25.4 mm (1.00 in).

1979	77.9	71244	16016	25727	5783	22.4	15.03	14.6	9.84	14	14	7
------	------	-------	-------	-------	------	------	-------	------	------	----	----	---

Additional standard belt widths are available in steps of 76.1 mm (3.00 in). Additional non-standard belt widths are available in steps of 25.4 mm (1.00 in).

2968	116.9	106848	24019	38584	8674	33.5	22.54	22.0	14.76	20	20	10
------	-------	--------	-------	-------	------	------	-------	------	-------	----	----	----

General belt tolerance is +0/-0.4% at 23°C/73°F and 50% RH. For exact belt width contact Customer Service. Non standard belt width on request.

\*Max. Load per Drive Sprocket. Belt material: POM-LF 2000 N (450 lbf), PP 1200 N (270 lbf).

\*\*Max. Spacing between wear strips, Carry: 152 mm (6 in); Return: 304 mm (12 in).

= Single Link



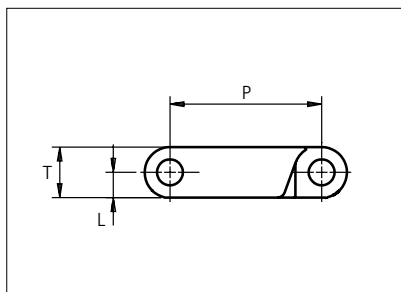
NON STANDARD

STRAIGHT RUNNING

PITCH 38.1 MM/1.50 IN

# Plastic Modular Belt

Series **uni SSB** Type **22%**



Straight running belt  
 Nominal pitch: 38.1 mm (1.50 in)  
 Surface type: Flat  
 Surface opening: 22%  
 Backflex radius: 45.0 mm (1.8 in)  
 Pin diameter: 6.4 mm (0.25 in)

Recommended belt material & color	POM-LF <b>BR</b>	PP <b>G</b>	mm	in	mm	in		
	Recommended pin and lock material & color		P (Nominal)	38.1	1.50	T	12.7	0.50
	PBT-GR <b>N</b>	PP <b>B</b>	L	6.4	0.25	-	-	-

Non standard material and color: See uni Material and Color Overview.

Alternative pin and lock materials: Pin: PP **W** PA66 **N** SS304

Belt width		Permissible tensile force (Belt/pin material)				Belt weight (Belt/pin material)				*Min. No. drive sprocket per shaft	Number of wear strips (Min. No.)	
		POM-LF/PBT-GR		PP/PBT-GR		POM-LF/PBT-GR		PP/PBT-GR			**Carry (pcs)	**Return (pcs)
mm	in	N	lbf	N	lbf	kg/m	lb/ft	kg/m	lb/ft			
153	6.0	5508	1238	1989	447	1.7	1.16	1.1	0.76	2	2	2
229	9.0	8244	1853	2977	669	2.6	1.74	1.7	1.14	2	2	2
305	12.0	10980	2468	3965	891	3.4	2.32	2.3	1.52	3	3	2
381	15.0	13716	3083	4953	1113	4.3	2.89	2.8	1.89	3	3	2
457	18.0	16452	3698	5941	1336	5.2	3.47	3.4	2.27	4	4	2
533	21.0	19188	4313	6929	1558	6.0	4.05	3.9	2.65	4	4	2
609	24.0	21924	4929	7917	1780	6.9	4.62	4.5	3.03	5	5	3
685	27.0	24660	5544	8905	2002	7.7	5.20	5.1	3.41	5	5	3
761	30.0	27396	6159	9893	2224	8.6	5.78	5.6	3.78	6	6	3
838	33.0	30168	6782	10894	2449	9.5	6.36	6.2	4.17	6	6	3
914	36.0	32904	7397	11882	2671	10.3	6.94	6.8	4.55	7	7	4
990	39.0	35640	8012	12870	2893	11.2	7.52	7.3	4.92	7	7	4

Additional standard belt widths are available in steps of 76.1 mm (3.00 in). Additional non-standard belt widths are available in steps of 25.4 mm (1.00 in).

1979	77.9	71244	16016	25727	5783	22.4	15.03	14.6	9.84	14	14	7
------	------	-------	-------	-------	------	------	-------	------	------	----	----	---

Additional standard belt widths are available in steps of 76.1 mm (3.00 in). Additional non-standard belt widths are available in steps of 25.4 mm (1.00 in).

2968	116.9	106848	24019	38584	8674	33.5	22.54	22.0	14.76	20	20	10
------	-------	--------	-------	-------	------	------	-------	------	-------	----	----	----

General belt tolerance is +0/-0.4% at 23°C/73°F and 50% RH. For exact belt width contact Customer Service. Non standard belt width on request.

\*Max. Load per Drive Sprocket. Belt material: POM-LF 2000 N (450 lbf), PP 1200 N (270 lbf).

\*\*Max. Spacing between wear strips, Carry: 152 mm (6 in); Return: 304 mm (12 in).

= Single Link



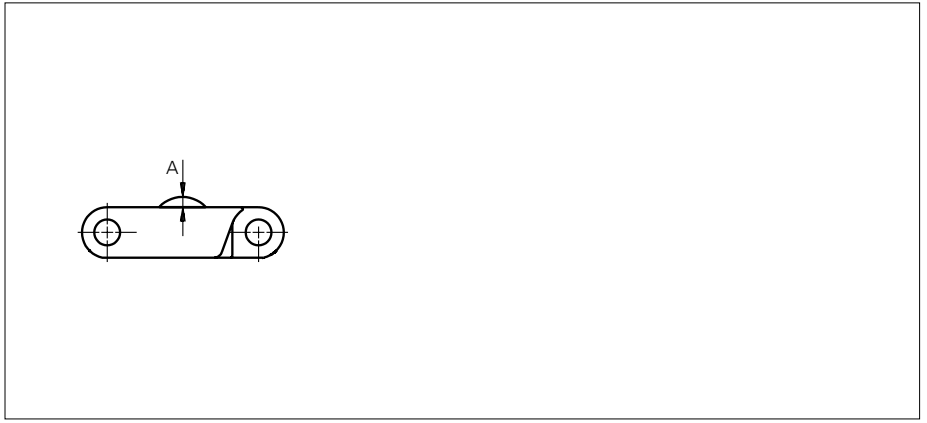
NON STANDARD

STRAIGHT RUNNING

PITCH 38.1 MM/1.50 IN

## Accessories

### Rubber Top

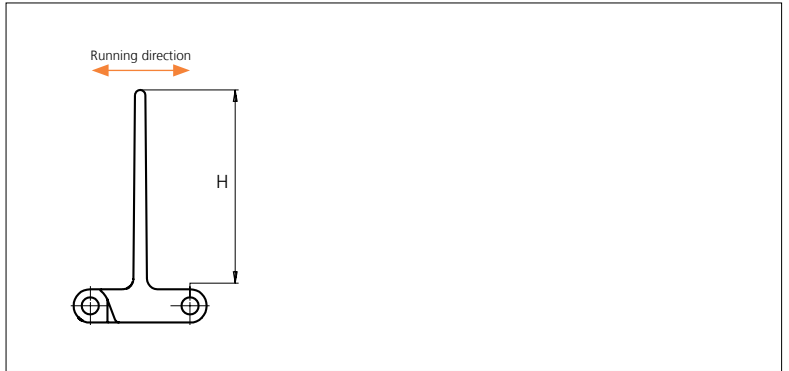
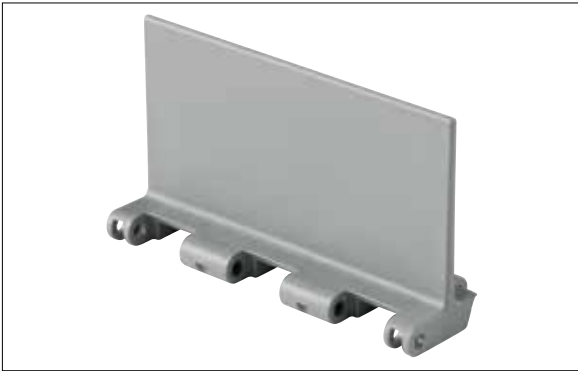


Type	Belt material & color	Rubber material & color	A		Link size	Width	
			mm	in		mm	in
Curved	POM-LF <b>BR</b>	05 <b>I</b>	2.5	0.10	K300	76.0	2.99
					K600	152.2	5.99

Non Standard material and color: See uni Material and Color Overview.

## Accessories

### Flight



Type	Flight Material & color	H		Link size	Width	
		mm	in		mm	in
Flat	PP-I <b>G</b>	76.1	3.00	K600	152.0	5.99

Non Standard material and color: See uni Material and Color Overview.

Minimum bricklaid indent is for uni SSB Product Support 50.8 mm (2.00 in)

Increment: 25.4 mm (1.00 in)

## Sprocket

No. of teeth	Bore size												Overall diameter		Pitch diameter		Hub diameter		Dimension A		Dimension B		Single row/Two way	Double row/Two way	Molded PA6 LG	Machined PA6 N
	Pilot Bore	in	0.75	0.78	0.98	1.00	1.18	1.25	1.50	1.57	2.36	2.50														
	mm	19.1	20.0	25.0	25.4	30.0	31.8	38.1	40.0	60.0	63.5	90.0	mm	in	mm	in	mm	in	mm	in						
Z19	x				●	●	●	■	●				117	4.61	117.3	4.62	75	2.95	49.1	1.93	65	2.56	x	x	x	
Z21	x				●	●	●	■	●				130	5.12	129.3	5.09	75	2.95	55.4	2.18	71	2.80	x	x	x	
Z23	x				●	●	●	■	●				142	5.59	141.2	5.56	75	2.95	61.6	2.43	77	3.03	x	x	x	
Z25	x				●	●	●	■	●				155	6.10	153.2	6.03	75	2.95	67.8	2.67	83	3.27	x	x	x	
Z27	x							●	●	●			167	6.57	165.2	6.5	75	2.95	74	2.91	89	3.50		x		x
Z29	x							●	●	●			179	7.05	177.2	6.98	75	2.95	80.2	3.16	95	3.74		x		x
Z31	x							●	●	●			192	7.56	198.3	7.81	75	2.95	86.4	3.40	101	3.98		x		x

Non standard material and color. See uni Material and Color Overview.

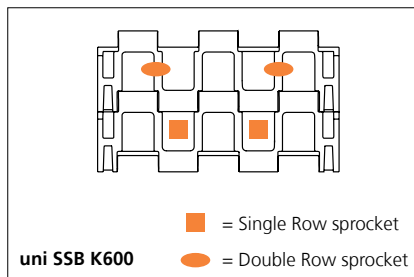
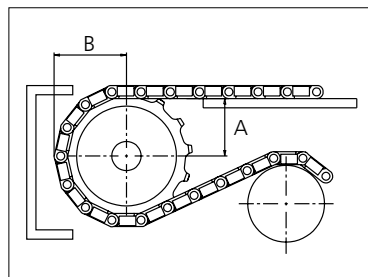
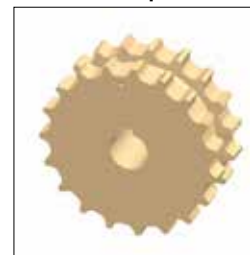
■ Molded sprocket

● Molded sprocket

● Molded sprocket

■ Machined sprocket

● Machined sprocket



Belt material	POM		PP	
	N	lbf	N	lbf
uni SSB	2000	450	1200	270

Other sprocket sizes are available upon request.

Two-part sprocket are available upon request.

Round bores are always delivered with keyway.

Other bore sizes are available upon request.

uni Retainer Rings: See uni Retainer Ring data sheet.

Width of tooth: 15.0 mm/0.59 in

Width of sprocket: Single row = 42.3 mm (1.67 in)

Double row = 42.3 mm (1.67 in)

Max. load per sprocket shown does not take bore size into account.

Please also ensure that sufficient size shaft is chosen for corresponding load.

For correct sprocket position: See uni Assembly Instructions for uni SSB.

For more detailed sprocket information, contact Customer Service.