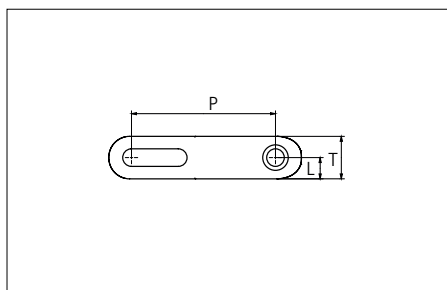


Plastic Modular Belt

Series **uni Flex L-OSB** Type **65% Open Radius 2.2**



Sideflexing belt
 Nominal pitch: 50.8 mm (2.00 in)
 Surface type: Open
 Surface opening: 65%
 Backflex radius: 30.0 mm (1.18 in)
 Pin diameter: 6.0 mm (0.24 in)
 Min. inside radius: R2.2 x belt width

Belt material & color	POM-D B	PP B	mm	in		mm	in	
			P (Nominal)	50.8	2.00	T	15.0	0.59
Pin and lock material & color	PA6.6 B		L	7.5	0.29	-	-	-

Non standard material and color: See uni Material and Color Overview.

Alternative pin and lock materials:

⚙ Snap Pin A1: PP **W** PBT **LG** PA6.6 **B** ⚙ Lockpin: PBT **LG**

Belt width		Permissible tensile force (Belt/pin material)								Belt weight (Belt/pin material)				*Min. No. drive sprocket per shaft	Number of wear strips (Min. No.)	
		POM-D/PA6.6				PP/PA6.6				POM-D/PA6.6		PP/PA6.6			Carry (pcs)	Return (pcs)
		Straight sections		Curve sections		Straight sections		Curve sections		kg/m	lb/ft	kg/m	lb/ft			
mm	in	N	lbf	N	lbf	N	lbf	N	lbf	kg/m	lb/ft	kg/m	lb/ft			
326	12.8	5803	1304	3300	742	4368	982	2080	468	2.2	1.45	1.6	1.06	3	2	2
428	16.9	6864	1543	3300	742	5205	1170	2080	468	2.8	1.91	2.1	1.39	3	2	2
530	20.9	7924	1781	3300	742	6041	1358	2080	468	3.5	2.37	2.6	1.72	4	2	2
631	24.8	8975	2018	3300	742	6869	1544	2080	468	4.2	2.82	3.0	2.05	4	3	3
733	28.9	10036	2256	3300	742	7706	1732	2080	468	4.9	3.27	3.5	2.38	5	3	3
834	32.8	11086	2492	3300	742	8534	1918	2080	468	5.5	3.72	4.0	2.71	5	3	3
936	36.9	12147	2731	3300	742	9370	2106	2080	468	6.2	4.18	4.5	3.04	5	3	3
1037	40.8	13197	2967	3300	742	10199	2293	2080	468	6.9	4.63	5.0	3.37	6	4	4
1139	44.8	14258	3205	3300	742	11035	2481	2080	468	7.6	5.08	5.5	3.70	6	4	4
1240	48.8	15308	3441	3300	742	11863	2667	2080	468	8.2	5.53	6.0	4.03	6	4	4
1342	52.8	16369	3680	3300	742	12700	2855	2080	468	8.9	5.99	6.5	4.36	7	5	5
1443	56.8	17420	3916	3300	742	13528	3041	2080	468	9.6	6.44	7.0	4.68	7	5	5

Additional standard belt widths are available in steps of 101.6 mm (4.00 in). Additional non-standard belt widths are available in steps of 50.8 mm (2.00 in).

General belt tolerance is +0/-0.4% at 23°C/73°F. For exact belt width contact Customer Service. Non standard belt width on request.

*Max. Load per Drive Sprocket. Belt material: POM-D 1000 N (225 lbf), PP 550 N (123 lbf).

Belt needs support rollers or flanged rollers at each belt edge for support.

□ = Single Link

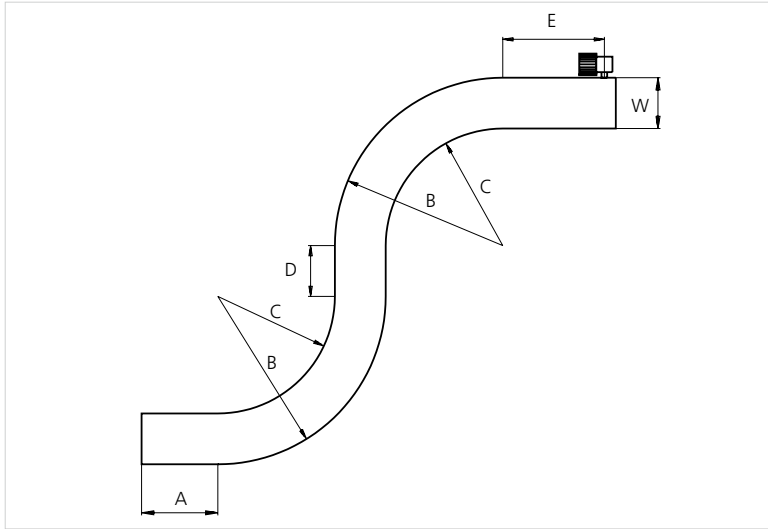


STANDARD

SIDE FLEXING

PITCH 50.8 MM/2.00 IN

Design Guidelines



uni Flex L-OSB 65% Open Radius 2.2	
A	min. 1.5 x W
B	min 3.2 x W
C	min 2.2 x W
D	min 2 x W
E	min 2 x W, min.
W	Belt width

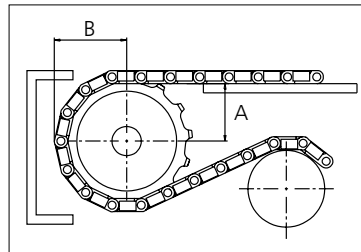
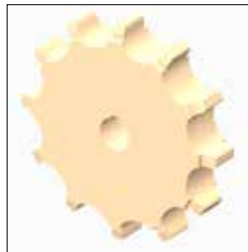
Sprocket

No. of teeth	Bore size													Overall diameter		Pitch diameter		Hub diameter		Dimension A		Dimension B		Single row/Two way	Double row/Two way	Molded PA6 LG	Machined PA6 N
	Pilot Bore	in	0.75	0.79	0.98	1.00	1.18	1.25	1.50	1.57	2.36	2.50	3.54														
	mm	19.1	20.0	25.0	25.4	30.0	31.8	38.1	40.0	60.0	63.5	90.0	mm	in	mm	in	mm	in	mm	in							
Z08	x				●	●		■				134.6	5.30	131.5	5.18	107.6	4.23	54.4	2.15	74.9	2.95	x			x		
Z10	x				●	●	●	■				168.3	6.63	164	6.46	141.3	5.56	71.4	2.81	90.8	3.57	x			x		
Z12	x				●	●	●	■	■		■	203.5	8.01	196.5	7.74	176.5	6.94	88.2	3.47	106.8	4.20	x			x		
Z15	x				●	●	●	■	■	■	■	253.4	9.98	245.4	9.66	226.4	8.91	113.2	4.46	131.0	5.16	x			x		

■ Machined sprocket



● Machined sprocket



Non standard material and color: See uni Material and Color Overview.

Other sprocket sizes are available upon request
 Two-part sprocket are available upon request
 Other bore sizes are available upon request
 uni Retainer Rings: See uni Retainer Ring data sheet
 Width of tooth = 30.0 mm (1.18 in)
 Width of sprocket = 40.0 mm (1.57 in)

Max. load per sprocket shown does not take bore size into account.
 Please also ensure that sufficient size shaft is chosen for corresponding load.

For correct sprocket position: See uni Assembly Instructions for uni Flex L-OSB.
 For more detailed sprocket information, contact Customer Service.

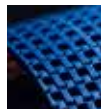
uni Flex L-OSB 65% Open Radius 2.2/1406



Conveyor Belts



Seamless Belts



Modular Belts



Timing Belts



Transmission Belts



Fabrication & service

Solid advice
 For all your belting needs
 Local stock & service
www.ammeraalbeltech.com

Ammeraal Beltech Modular A/S
 Hjulmagervej 21
 DK-7100 Vejle

T +45 7572 3100
 F +45 7572 3348
 admin@unichains.com
 www.unichains.com

This information is subject to alteration due to continuous development. Ammeraal Beltech will not be held liable for the incorrect use of the above stated information. This information replaces previous information. All activities performed and services rendered by Ammeraal Beltech are subject to general terms and conditions of sale and delivery, as applied by its operating companies.