

**Paso de 50.8 mm (2.00 pulgadas)**



**uni BLB – la banda perfecta para cocinar, cocer al vapor y escaldar**

El diseño de la uni BLB combina el plástico con el acero inoxidable. Una superficie única de la banda garantiza que los productos transportados entran únicamente en contacto con el plástico sin que se pierdan las ventajas del acero inoxidable. La combinación de plástico y acero inoxidable evita de este modo el alargamiento y la reducción de esfuerzo a las temperaturas de ebullición del agua. Esto hace que uni BLB resulte ideal para manipular todo tipo de productos sensibles tales como verduras, frutas y pasta. Con las aperturas especiales en la superficie, incluso se puede manipular arroz con la uni BLB.

**La banda BLB mejora el rendimiento en las siguientes industrias/aplicaciones:**

- Escaldado de verduras y arroz
- Cocinado o precocinado de pasta fresca
- Cocer arroz al vapor
- Cocinar y enfriar pescado y marisco

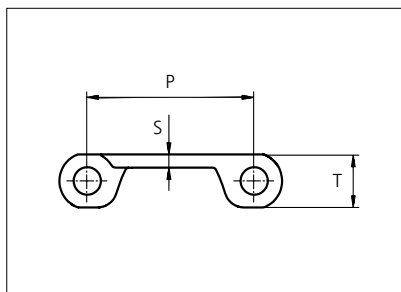
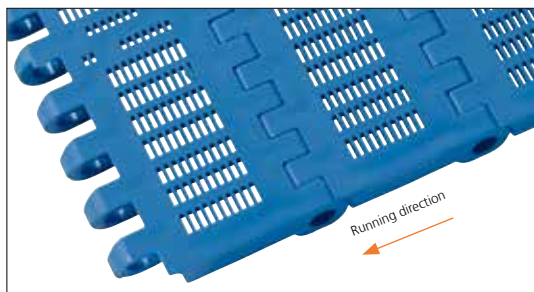
**Características del producto y ventajas de funcionamiento:**

- Una mejor calidad del producto, ya que la superficie de la banda garantiza unos daños mínimos en los productos y una separación fácil de la banda
- Sin marcas de la superficie de la banda en los productos

- No se produce contaminación o daños en los productos debido al contacto con el acero inoxidable
- Una alta duración y unos costes de mantenimiento bajos
- Un diseño simplificado y fiable ya que se reduce el alargamiento de la banda debido a la temperatura en un 90% en comparación con las bandas de plástico
- Un rendimiento superior del producto debido a un diseño higiénico y un tiempo inferior de limpieza
- Una mayor utilización del equipo ya que se pueden manipular diversos productos en la misma banda. Esto hace que el equipo dependa en menor grado de las temporadas cortas de cosecha

# Plastic Modular Belt

Series **uni BLB** Type **18%**



Straight running belt  
 Nominal pitch: 50.8 mm (2.00 in)  
 Surface type: Flat  
 Surface opening: 18%  
 Backflex radius: 65.0 mm (2.60 in)  
 Pin diameter: 8.0 mm (0.31 in)

|                       |                               |                              |                    |      |      |          |      |
|-----------------------|-------------------------------|------------------------------|--------------------|------|------|----------|------|
| Belt material & color | PP-HW <b>LB</b>               |                              | mm                 | in   |      | mm       | in   |
|                       | Pin and lock material & color | <b>SS304</b> <b>PP-HW LB</b> | <b>P (Nominal)</b> | 50.8 | 2.00 | <b>T</b> | 16.0 |
| <b>S</b>              |                               |                              | 4.0                | 0.16 | -    | -        | -    |

Non standard material and color: See uni Material and Color Overview.

Alternative pin and lock materials: Lockpin: PP-HW **LB**

| Belt width |      | ***Permissible tensile force (Belt/pin material) |      |              |      | Belt weight (Belt/pin material) |       |             |       | *Min. No. drive sprocket per shaft | Number of wear strips (Min. No.) |                |
|------------|------|--|------|--------------|------|---------------------------------|-------|-------------|-------|------------------------------------|----------------------------------|----------------|
|            |      | PP-HW/SS   |      | PP-HW/ PP-HW |      | PP-HW/SS                        |       | PP-HW/PP-HW |       |                                    | **Carry (pcs)                    | **Return (pcs) |
| mm         | in   | N  | lbf  | N            | lbf  | kg/m                            | lb/ft | kg/m        | lb/ft |                                    |                                  |                |
| 153        | 6.0  | 1010   | 227  | 1010         | 227  | 1.8                             | 1.20  | 0.7         | 0.49  | 2                                  | 2                                | 2              |
| 306        | 12.0 | 2020   | 454  | 2020         | 454  | 3.6                             | 2.41  | 1.5         | 0.99  | 3                                  | 3                                | 2              |
| 357        | 14.0 | 2354   | 529  | 2354         | 529  | 4.2                             | 2.80  | 1.7         | 1.15  | 3                                  | 3                                | 2              |
| 408        | 16.1 | 2693   | 605  | 2693         | 605  | 4.8                             | 3.21  | 2.0         | 1.32  | 3                                  | 3                                | 2              |
| 459        | 18.1 | 3028   | 681  | 3028         | 681  | 5.4                             | 3.61  | 2.2         | 1.48  | 4                                  | 4                                | 2              |
| 509        | 20.1 | 3362   | 756  | 3362         | 756  | 6.0                             | 4.01  | 2.4         | 1.64  | 4                                  | 4                                | 2              |
| 560        | 22.1 | 3697   | 831  | 3697         | 831  | 6.6                             | 4.40  | 2.7         | 1.81  | 4                                  | 4                                | 2              |
| 611        | 24.1 | 4032   | 906  | 4032         | 906  | 7.1                             | 4.80  | 2.9         | 1.97  | 5                                  | 5                                | 3              |
| 662        | 26.0 | 4367   | 982  | 4367         | 982  | 7.7                             | 5.20  | 3.2         | 2.13  | 5                                  | 5                                | 3              |
| 713        | 28.1 | 4706   | 1058 | 4706         | 1058 | 8.3                             | 5.61  | 3.4         | 2.30  | 5                                  | 5                                | 3              |
| 764        | 30.1 | 5041   | 1133 | 5041         | 1133 | 8.9                             | 6.01  | 3.7         | 2.46  | 6                                  | 6                                | 3              |
| 815        | 32.1 | 5379   | 1209 | 5379         | 1209 | 9.5                             | 6.41  | 3.9         | 2.63  | 6                                  | 6                                | 3              |

Additional standard belt widths are available in steps of 50.7 mm (2.00 in).

|      |      |       |      |       |      |      |       |     |      |    |    |   |
|------|------|-------|------|-------|------|------|-------|-----|------|----|----|---|
| 1985 | 78.1 | 13101 | 2945 | 13101 | 2945 | 23.2 | 15.61 | 9.5 | 6.40 | 14 | 14 | 7 |
|------|------|-------|------|-------|------|------|-------|-----|------|----|----|---|

Additional standard belt widths are available in steps of 50.7 mm (2.00 in).

|      |       |       |      |       |      |      |       |      |      |    |    |    |
|------|-------|-------|------|-------|------|------|-------|------|------|----|----|----|
| 3003 | 118.2 | 19820 | 4455 | 19820 | 4455 | 35.1 | 23.61 | 14.4 | 9.69 | 21 | 21 | 11 |
|------|-------|-------|------|-------|------|------|-------|------|------|----|----|----|

General belt tolerance is +0/-0.4% at 23°C/73°F and 50% RH. For exact belt width contact Customer Service. Non standard belt width on request.

\*Max. Load per Drive Sprocket. Belt material: PP-HW with snub roller 2000 N (450 lbf), PP-HW without snub roller 1250 N (281 lbf).

\*\*Max. Spacing between wear strips, Carry: 152.0 mm (6.00 in); Return: 304.0 mm (12.00 in).

\*\*\*Load capacity per row of reinforcement links in the belt: 2500 N (562 lbf).

\*\*\*Example: Belt with 8 rows of reinforcement links, permissible load is 8 x 2500 N (562 lbf) = 20000 N (4496 lbf).

= Single Link



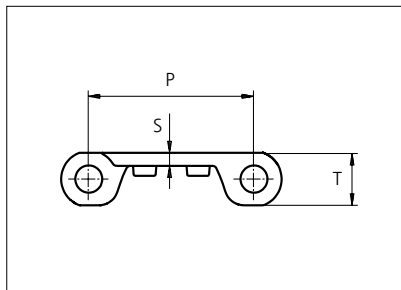
STANDARD

STRAIGHT RUNNING

PITCH 50.8 MM/2.00 IN

# Plastic Modular Belt

Series **uni BLB** Type **22%**



Straight running belt  
 Nominal pitch: 50.8 mm (2.00 in)  
 Surface type: Flat  
 Surface opening: 22%  
 Backflex radius: 65.0 mm (2.60 in)  
 Pin diameter: 8.0 mm (0.31 in)

|                       |                               |                        |             |      |      |    |      |
|-----------------------|-------------------------------|------------------------|-------------|------|------|----|------|
| Belt material & color | PP-HW <b>LB</b>               |                        | mm          | in   |      | mm | in   |
|                       | Pin and lock material & color | SS304  PP-HW <b>LB</b> | P (Nominal) | 50.8 | 2.00 | T  | 16.0 |
| S                     |                               |                        | 4.0         | 0.16 | -    | -  | -    |

Non standard material and color: See uni Material and Color Overview.

Alternative pin and lock materials: Lockpin: PP-HW **LB**

| Belt width |      | ***Permissible tensile force (Belt/pin material) |      |              |      | Belt weight (Belt/pin material) |       |             |       | *Min. No. drive sprocket per shaft | Number of wear strips (Min. No.) |                |
|------------|------|--|------|--------------|------|---------------------------------|-------|-------------|-------|------------------------------------|----------------------------------|----------------|
|            |      | PP-HW/SS   |      | PP-HW/ PP-HW |      | PP-HW/SS                        |       | PP-HW/PP-HW |       |                                    | **Carry (pcs)                    | **Return (pcs) |
| mm         | in   | N  | lbf  | N            | lbf  | kg/m                            | lb/ft | kg/m        | lb/ft |                                    |                                  |                |
| 152        | 6.0  | 1005   | 226  | 1005         | 226  | 1.8                             | 1.20  | 0.7         | 0.49  | 2                                  | 2                                | 2              |
| 305        | 12.0 | 2013   | 453  | 2013         | 453  | 3.6                             | 2.40  | 1.5         | 0.98  | 3                                  | 3                                | 2              |
| 356        | 14.0 | 2348   | 528  | 2348         | 528  | 4.2                             | 2.80  | 1.7         | 1.15  | 3                                  | 3                                | 2              |
| 406        | 16.0 | 2683   | 603  | 2683         | 603  | 4.8                             | 3.20  | 2.0         | 1.31  | 3                                  | 3                                | 2              |
| 457        | 18.0 | 3017   | 678  | 3017         | 678  | 5.3                             | 3.59  | 2.2         | 1.47  | 4                                  | 4                                | 2              |
| 508        | 20.0 | 3352   | 754  | 3352         | 754  | 5.9                             | 3.99  | 2.4         | 1.64  | 4                                  | 4                                | 2              |
| 559        | 22.0 | 3687   | 829  | 3687         | 829  | 6.5                             | 4.39  | 2.7         | 1.80  | 4                                  | 4                                | 2              |
| 609        | 24.0 | 4022   | 904  | 4022         | 904  | 7.1                             | 4.79  | 2.9         | 1.97  | 5                                  | 5                                | 3              |
| 660        | 26.0 | 4356   | 979  | 4356         | 979  | 7.7                             | 5.19  | 3.2         | 2.13  | 5                                  | 5                                | 3              |
| 711        | 28.0 | 4691   | 1055 | 4691         | 1055 | 8.3                             | 5.59  | 3.4         | 2.29  | 5                                  | 5                                | 3              |
| 762        | 30.0 | 5026   | 1130 | 5026         | 1130 | 8.9                             | 5.99  | 3.7         | 2.46  | 6                                  | 6                                | 3              |
| 812        | 32.0 | 5361   | 1205 | 5361         | 1205 | 9.5                             | 6.39  | 3.9         | 2.62  | 6                                  | 6                                | 3              |

Additional standard belt widths are available in steps of 50.7 mm (2.00 in).

|      |      |       |      |       |      |      |       |     |      |    |    |   |
|------|------|-------|------|-------|------|------|-------|-----|------|----|----|---|
| 1979 | 77.9 | 13061 | 2936 | 13061 | 2936 | 23.2 | 15.56 | 9.5 | 6.38 | 14 | 14 | 7 |
|------|------|-------|------|-------|------|------|-------|-----|------|----|----|---|

Additional standard belt widths are available in steps of 50.7 mm (2.00 in).

|      |       |       |      |       |      |      |       |      |      |    |    |    |
|------|-------|-------|------|-------|------|------|-------|------|------|----|----|----|
| 2994 | 117.9 | 19760 | 4442 | 19760 | 4442 | 35.0 | 23.54 | 14.4 | 9.66 | 20 | 20 | 10 |
|------|-------|-------|------|-------|------|------|-------|------|------|----|----|----|

General belt tolerance is +0/-0.4% at 23°C/73°F and 50% RH . For exact belt width contact Customer Service. Non standard belt width on request.

\*Max. Load per Drive Sprocket. Belt material: PP-HW with snub roller 2000 N (450 lbf), PP-HW without snub roller 1250 N (281 lbf)

\*\*Max. Spacing between wear strips, Carry: 152.0 mm (6.00 in); Return: 304.0 mm (12.00 in).

\*\*\*Load capacity per row of reinforcement links in the belt: 2500 N (562 lbf)

\*\*\*Example: Belt with 8 rows of reinforcement links, permissible load is 8 x 2500 N (562 lbf) = 20000 N (4496 lbf)

= Single Link



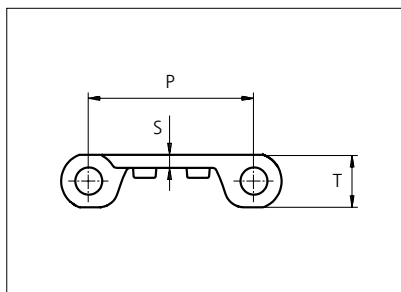
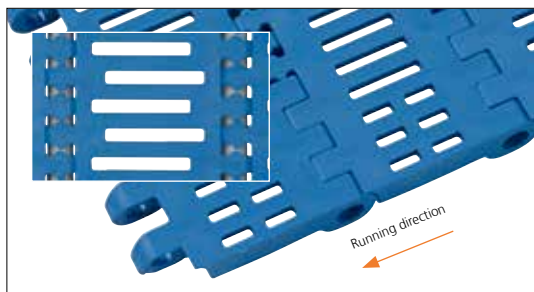
STANDARD

STRAIGHT RUNNING

PITCH 50.8 MM/2.00 IN

# Plastic Modular Belt

Series **uni BLB** Type **38%**



Straight running belt  
 Nominal pitch: 50.8 mm (2.00 in)  
 Surface type: Flat  
 Surface opening: 38%  
 Backflex radius: 65.0 mm (2.60 in)  
 Pin diameter: 8.0 mm (0.31 in)

|  |                              |                    |           |      |           |              |
|--|------------------------------|--------------------|-----------|------|-----------|--------------|
| <b>Belt material &amp; color</b>         | PP-HW <b>LB</b>              | <b>mm</b>          | <b>in</b> |      | <b>mm</b> | <b>in</b>    |
| <b>Pin and lock material &amp; color</b> | <b>SS304</b> <b>PP-HW LB</b> | <b>P (Nominal)</b> | 50.8      | 2.00 | <b>T</b>  | 16.0<br>0.63 |
|  |                              | <b>S</b>           | 4.0       | 0.16 | -         | -            |

Non standard material and color: See uni Material and Color Overview.

Alternative pin and lock materials: Lockpin: PP-HW **LB**

| Belt width |      | ***Permissible tensile force (Belt/pin material) |      |              |      | Belt weight (Belt/pin material) |       |             |       | *Min. No. drive sprocket per shaft | Number of wear strips (Min. No.) |                |
|------------|------|--|------|--------------|------|---------------------------------|-------|-------------|-------|------------------------------------|----------------------------------|----------------|
|            |      | PP-HW/SS   |      | PP-HW/ PP-HW |      | PP-HW/SS                        |       | PP-HW/PP-HW |       |                                    | **Carry (pcs)                    | **Return (pcs) |
| mm         | in   | N  | lbf  | N            | lbf  | kg/m                            | lb/ft | kg/m        | lb/ft |                                    |                                  |                |
| 152        | 6.0  | 1005   | 226  | 1005         | 226  | 1.8                             | 1.20  | 0.7         | 0.49  | 2                                  | 2                                | 2              |
| 305        | 12.0 | 2013   | 453  | 2013         | 453  | 3.6                             | 2.40  | 1.5         | 0.98  | 3                                  | 3                                | 2              |
| 356        | 14.0 | 2348   | 528  | 2348         | 528  | 4.2                             | 2.80  | 1.7         | 1.15  | 3                                  | 3                                | 2              |
| 406        | 16.0 | 2683   | 603  | 2683         | 603  | 4.8                             | 3.20  | 2.0         | 1.31  | 3                                  | 3                                | 2              |
| 457        | 18.0 | 3017   | 678  | 3017         | 678  | 5.3                             | 3.59  | 2.2         | 1.47  | 4                                  | 4                                | 2              |
| 508        | 20.0 | 3352   | 754  | 3352         | 754  | 5.9                             | 3.99  | 2.4         | 1.64  | 4                                  | 4                                | 2              |
| 559        | 22.0 | 3687   | 829  | 3687         | 829  | 6.5                             | 4.39  | 2.7         | 1.80  | 4                                  | 4                                | 2              |
| 609        | 24.0 | 4022   | 904  | 4022         | 904  | 7.1                             | 4.79  | 2.9         | 1.97  | 5                                  | 5                                | 3              |
| 660        | 26.0 | 4356   | 979  | 4356         | 979  | 7.7                             | 5.19  | 3.2         | 2.13  | 5                                  | 5                                | 3              |
| 711        | 28.0 | 4691   | 1055 | 4691         | 1055 | 8.3                             | 5.59  | 3.4         | 2.29  | 5                                  | 5                                | 3              |
| 762        | 30.0 | 5026   | 1130 | 5026         | 1130 | 8.9                             | 5.99  | 3.7         | 2.46  | 6                                  | 6                                | 3              |
| 812        | 32.0 | 5361   | 1205 | 5361         | 1205 | 9.5                             | 6.39  | 3.9         | 2.62  | 6                                  | 6                                | 3              |

Additional standard belt widths are available in steps of 50.7 mm (2.00 in).

|      |      |       |      |       |      |      |       |     |      |    |    |   |
|------|------|-------|------|-------|------|------|-------|-----|------|----|----|---|
| 1979 | 77.9 | 13061 | 2936 | 13061 | 2936 | 23.2 | 15.56 | 9.5 | 6.38 | 14 | 14 | 7 |
|------|------|-------|------|-------|------|------|-------|-----|------|----|----|---|

Additional standard belt widths are available in steps of 50.7 mm (2.00 in).

|      |       |       |      |       |      |      |       |      |      |    |    |    |
|------|-------|-------|------|-------|------|------|-------|------|------|----|----|----|
| 2994 | 117.9 | 19760 | 4442 | 19760 | 4442 | 35.0 | 23.54 | 14.4 | 9.66 | 20 | 20 | 10 |
|------|-------|-------|------|-------|------|------|-------|------|------|----|----|----|

General belt tolerance is +0/-0.4% at 23°C/73°F and 50% RH. For exact belt width contact Customer Service. Non standard belt width on request.

\*Max. Load per Drive Sprocket. Belt material: PP-HW with snub roller 2000 N (450 lbf), PP-HW without snub roller 1250 N (281 lbf)

\*\*Max. Spacing between wear strips, Carry: 152.0 mm (6.00 in); Return: 304.0 mm (12.00 in).

\*\*\*Load capacity per row of reinforcement links in the belt: 2500 N (562 lbf) Example: Belt with 8 rows of reinforcement links,

\*\*\*Example: Belt with 8 rows of reinforcement links, permissible load is 8 x 2500 N (562 lbf) = 20000 N (4496 lbf)

= Single Link



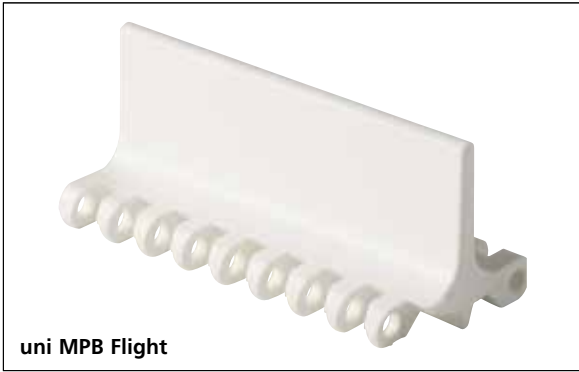
STANDARD

STRAIGHT RUNNING

PITCH 50.8 MM/2.00 IN

## Accessories

### Flight / Non Standard

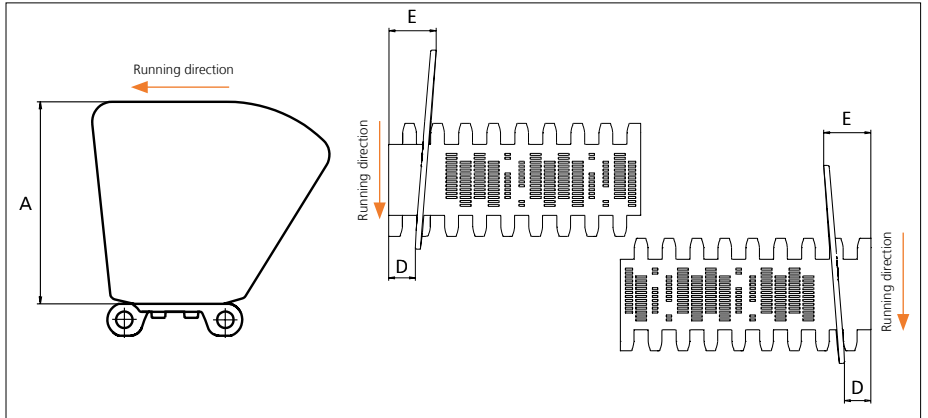


uni MPB Flight

uni MPB Flights in PP-HW **LB** fits the BLB belt and are available on request. Please see the uni MPB Flight datasheet for more information.

## Accessories

### Side Guard



| Type   | Material & color | A     |      | E    |      | D    |      |
|--------|------------------|-------|------|------|------|------|------|
|        |                  | mm    | in   | mm   | in   | mm   | in   |
| Closed | PP-HW <b>LB</b>  | 101.6 | 4.00 | 28.5 | 1.12 | 16.0 | 0.63 |

Non Standard material and color: See uni Material and Color Overview.  
Backflex radius for Side Guard: 200.0 mm (7.90 in)

## Accessories

### Reinforcement Link



Load capacity per row of reinforcement links in the belt. Maximum 19 rows per metre belt width.  
Example: If seven rows are installed the max. permissible load of the belt is  $7 \times 2500 \text{ N (562 lbf)} = 17500 \text{ N (3934 lbf)}$ .

| Type       | Material & color | N/row | Lbf/row |
|------------|------------------|-------|---------|
| Steel Link | <b>SS316</b>     | 2500  | 562     |

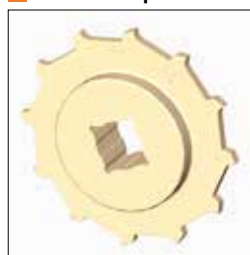
Non Standard material and color: See uni Material and Color Overview.

### Sprocket

| No of teeth | Bore size  |    |      |      |      |      |      |      |      | Overall diameter |       | Pitch-diameter |       | Hub-diameter |      | Dimension A |      | Dimension B |      | Single row/One way | Molded PA6 LG | Machined PA6 N |
|-------------|------------|----|------|------|------|------|------|------|------|------------------|-------|----------------|-------|--------------|------|-------------|------|-------------|------|--------------------|---------------|----------------|
|             | Pilot bore | in |      |      | mm   |      |      | 60.0 | 63.5 |                  |       |                |       |              |      |             |      |             |      |                    |               |                |
|             |            | mm | 25.4 | 30.0 | 31.8 | 38.1 | 40.0 |      |      | 60.0             | 63.5  |                |       |              |      |             |      |             |      |                    |               |                |
| Z08         | ✓          | ●  | ●    | ●    | ■    | ■    |      |      |      | 132.9            | 5.23  | 132.8          | 5.23  | 65.0         | 2.56 | 53.3        | 2.10 | 74.9        | 2.94 | ✓                  | ✓             |                |
| Z10         | ✓          |    | ●    | ●    | ●    | ■    | ■    |      |      | 166.3            | 6.55  | 164.4          | 6.47  | 65.0         | 2.56 | 70.2        | 2.76 | 90.7        | 3.57 | ✓                  | ✓             |                |
| Z10         |            |    |      |      |      |      | ■    | ■    |      | 166.3            | 6.55  | 164.4          | 6.47  | 120.0        | 4.72 | 70.2        | 2.76 | 90.7        | 3.57 | ✓                  | ✓             |                |
| Z12         | ✓          |    | ●    | ●    | ●    | ■    | ■    |      |      | 198.6            | 7.82  | 196.3          | 7.73  | 65.0         | 2.56 | 86.8        | 3.42 | 106.6       | 4.19 | ✓                  | ✓             |                |
| Z12         |            |    |      |      |      |      | ■    | ■    |      | 198.6            | 7.82  | 196.3          | 7.73  | 120.0        | 4.72 | 86.8        | 3.42 | 106.6       | 4.19 | ✓                  | ✓             |                |
| Z16         | ✓          |    | ●    | ●    | ●    | ■    | ■    | ■    | ■    | 263.8            | 10.39 | 260.4          | 10.25 | 150.0        | 5.90 | 119.7       | 4.71 | 138.7       | 5.46 | ✓                  |               | ✓              |

● Molded sprocket

■ Machined sprocket



Other sprocket sizes are available upon request.

Other bore sizes on sprockets are available upon request.

Max. load per sprocket shown does not take bore size into account.

Please also ensure that sufficient size shaft is chosen for corresponding load.

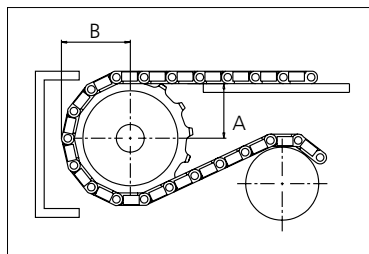
Width of tooth = Single row: 9.5 mm (0.37 in)

Width of One-part sprocket = Single row: 42.3 mm (1.67 in)

### uni UltraClean Two-Part Sprocket

| No. of teeth | Bore size |      |      |      | Overall diameter |      | Pitch-diameter |      | Hub-diameter                             |  | Dimension A |      | Dimension B |      | Single row/One way | Moulded PA6 W |
|--------------|-----------|------|------|------|------------------|------|----------------|------|--|--|-------------|------|-------------|------|--------------------|---------------|
|              | in        | 1.50 | 1.57 | 2.36 |                  |      |                |      |  |  |             |      |             |      |                    |               |
|              | mm        | 38.1 | 40.0 | 60.0 | mm               | in   | mm             | in   | mm                                       | in                                     | mm          | in   |             |      |                    |               |
| Z8           |           | ■    | ■    |      | 132.9            | 5.23 | 132.8          | 5.23 | 80.0                                     | 3.15                                   | 53.3        | 2.10 | 74.9        | 2.94 | ✓                  | ✓             |
| Z10          |           | 1 ■  | 1 ■  | 2 ■  | 166.3            | 6.55 | 164.4          | 6.47 | <sup>1</sup> 126.0<br><sup>2</sup> 118.0 | <sup>1</sup> 4.96<br><sup>2</sup> 4.65 | 70.2        | 2.76 | 90.7        | 3.57 | ✓                  | ✓             |
| Z12          |           | 1 ■  | 1 ■  | 2 ■  | 198.6            | 7.82 | 196.3          | 7.73 | <sup>1</sup> 126.0<br><sup>2</sup> 118.0 | <sup>1</sup> 4.96<br><sup>2</sup> 4.65 | 86.8        | 3.42 | 106.6       | 4.19 | ✓                  | ✓             |

■ Moulded uni UltraClean TwoPart Sprocket



Width of UltraClean Two-part sprocket = Single row: 44.0 mm (1.73 in)

Width of UltraClean Two-part sprocket, tooth = Single row: 9.5 mm (0.37 in)

uni Retainer Rings: See uni Retainer Ring data sheet.

For correct sprocket position: See uni Assembly Instructions for uni BLB.

For more detailed sprocket information, contact Customer Service.